

SEARCHING WITH FRIENDS ^{*}

Stefano Caria,[†] Simon Franklin,[‡] Marc Witte[§]

December 16, 2021

Abstract

We study how active labor market policies affect the exchange of information and support among jobseekers. Leveraging a unique social network survey in Ethiopia, we find that a randomized job-search assistance intervention reduces information sharing and support between treated jobseekers and their active job-search partners. Due to lower job-search support, untreated individuals search less and, suggestively, have worse employment outcomes. These results are explained by a model of networks where unemployed individuals form job-search partnerships to exploit the complementarities of job search. These partnerships are broken if policy creates inequality in the cost of job search.

^{*}We are grateful to Steffen Altmann, Emily Breza, Esther Duflo, Marcel Fafchamps, Morgan Hardy, Ingo Isphording, Patrizio Piraino, Simon Quinn, Margaret Stevens for helpful comments and to Biruk Tekle for outstanding research assistance. We received helpful feedback from seminar participants at IZA, Oxford, LSE, Göttingen, and conference participants at CSAE, NEUDC, RES, DIAL and PEGNet. Data collection was funded by GLM — LIC. The project would not have been possible without the constant support of Rose Page and the Centre for the Study of African Economies (University of Oxford), nor without the support of the Ethiopian Development Research Institute in Addis Ababa.

[†]University of Warwick, stefano.caria@warwick.ac.uk.

[‡]Queen Mary University of London, s.franklin@qmul.ac.uk.

[§]IZA Institute of Labor Economics. Corresponding author: witte@iza.org.

1 Introduction

Social networks play a key role in job search. This is particularly true in developing countries, where 50 percent of workers report that they found out about their job through social networks.¹ However, the nature of the social connections that people leverage in the labor market is poorly understood. This lack of understanding makes it hard to predict how labor market networks respond to policy. Do the direct beneficiaries of labor market policies support non-beneficiaries by sharing information and resources? Or do beneficiaries break social ties with non-beneficiaries because they no longer find it worthwhile to continue exchanging information and support?

In this paper, we show that job-search networks can be weakened by labor market interventions and that this can have adverse consequences for untreated individuals. These results have important implications for employment interventions, because typically such policies do not treat all people in a community – for example due to age, geographic, or neediness restrictions (Crépon et al., 2013, Card et al., 2018). They also advance our understanding of the nature of social networks in the labor market. Our setting and empirical results are consistent with models in which network links are formed on the basis of strategic interests and therefore can be broken by external interventions that disrupt those interests.

We focus on the understudied job-search support networks that exist between unemployed individuals. These networks deserve special attention for two reasons. First, survey data with young jobseekers in Addis Ababa, Ethiopia, shows that this is a crucial part of how networks are used to find jobs.² Second, these networks may react differently to external interventions compared to the types of networks that have received more attention in the literature. Existing work has often taken social connections as given, and has assumed that information is mostly shared by employed individuals who obtain it by virtue of their connection to a firm (Granovetter, 1973, Munshi, 2003, Beaman and Magruder, 2012, Cingano and Rosolia, 2012).³ Instead, we hypothesise that, in our context, many relevant social connections are created between unemployed individuals with the view of helping one another to find a job. These connections are likely to be disrupted by interventions that generate inequality in job search costs, since the low-cost jobseeker may not find it convenient to maintain the partnership.

¹Authors own calculations based on Sapin et al. (2020) and further individual studies. Sapin et al. (2020) show that the fraction of job seekers who heard about their current job from a social contact varies from 13 percent in the US to 72 percent in the Philippines. For an overview of the literature, see Beaman (2016).

²In our data, 50 percent of the information-sharing partners of unemployed youth are themselves unemployed. Furthermore, 42 percent of respondents who received information about jobs from their networks say that the person providing the information did not have a particular connection to the employer.

³Indeed, our experiment was designed to test for this effect and therefore provide evidence of positive spillovers on untreated individuals. We had not initially anticipated the result that job search networks would be weakened.

Our experimental evidence comes from studying the effects of a randomized labor market intervention—a transport subsidy offered to young jobseekers—that has positive direct impacts on the job search intensity and labor market outcomes of treated individuals (Abebe et al., 2020). Treated individuals thus have lower search costs and acquire new labor market information thanks to the intervention (but have not, at the time of our endline survey, found new jobs). We collect a unique dataset that tracks the close social ties of “seed” individuals from both the treatment and control groups of the original experimental study. We call these social ties the “job-search partners” of the seeds: people with whom the seeds regularly share job-search expenses and job-vacancies information (which is typically acquired from public job advertisements). Our primary empirical test compares the behavior and outcomes of the partners of treated seeds to that of the partners of untreated seeds.

We establish two central empirical results. First, we find the job search intervention decreases social interaction among those job search partnerships where both individuals search for employment at baseline. In particular, five months after the start of treatment, we document a significant, 32 percent, decrease in the probability of sharing information about vacancies and a significant, 49 percent, decrease in the likelihood of sharing transport expenses. In the full sample (which includes pairs where some individuals are inactive), we find insignificant declines in information sharing and in other forms of support such as sharing transport expenses.

To explain these findings, we propose a simple model that studies how network formation interacts with job search. The model illustrates how unemployed individuals have incentives to form job-search partnerships whenever there are positive externalities to job search effort. Furthermore, it shows that inequality in job search costs makes job-search partnerships unstable. In line with this model, we provide additional empirical evidence on the key role played by inequality in job-search costs: we find that the negative effects are stronger for pairs of friends who reciprocally exchange information at baseline and have similar levels of expenditure—that is, the job search partnerships that are most likely to be maintained on the basis of an equilibrium of equal contributions to job search.

Our second central finding is that the partners of treated individuals reduce their job-search effort as a result of the intervention. In particular, we find that the job-search partners of treated seed individuals are significantly less likely to search for work compared to the partners of untreated seeds. Overall job search goes down by 20 percent, and job search strategies that require transport to the city centre are chosen less frequently (a 30 to 40 percent drop). We also discuss suggestive evidence of a reduction in employment for the partners of treated individuals. The coefficient magnitudes are economically meaningful, but marginally insignificant.

Our theoretical framework suggests that the break-up of job-search partnerships can cause a reduction in the untreated partner’s job search effort if the efforts of the two jobseekers are

strategic complements. We provide descriptive evidence that supports this interpretation: the returns to search effort are higher for individuals with stronger networks, suggesting that efforts are strategic complements.⁴ Consistent with this, we demonstrate quantitatively that the decrease in job search effort that we document can be explained in large part by the severing of job-search partnerships. To show this, we use mediation analysis to estimate the Average Controlled Direct Effect (ACDE) of the intervention—that is, the effect that the intervention would have had on the partner’s job search effort if social interaction with the treated seed had not changed (Acharya et al., 2016). We find that the ACDE is 80 percent smaller than the ATE we previously estimated: if job-search partnerships had not been disrupted, the reduction in job search among the partners of treated seeds would have been minimal.

Overall, our model of job-search partnerships with strategic complementarity in search effort can reconcile the main empirical findings of the paper. We also consider a number of alternative explanations for these findings, but fail to find empirical support for them. We start by exploring alternative mechanisms that could generate a weakening of job-search networks. First, we show that the weakening of job-search networks is not mechanical due to treated individuals spending more time working or searching for work. Second, we do not observe systematic changes in the location of residence of seeds or their partners, suggesting that the disruption of the partnership is not due to the emergence of additional spatial barriers. Third, we show that treated individuals do not systematically establish new links to higher-value job search partners, which implies that there is no “rewiring” of network ties. Furthermore, it is important to note that none of the alternative explanations considered so far is able to explain the reduction in partner search effort without positing an additional mechanism for that effect. We provide evidence inconsistent with three such alternative mechanisms that do not involve strategic complementarities: a discouragement effect, a change in the beliefs about the returns to job search, and a story in which job search partnerships only exist to finance a fixed cost required to engage in job search, but where search efforts are strategic substitutes.

The paper makes a number of contributions. First, we show that policy interventions can disrupt social networks. There is very little work studying how social networks are influenced by external interventions. An exception is the work of Comola and Prina (2017), Dupas et al. (2017), and Banerjee et al. (2018) who investigate how savings and microfinance interventions affect financial networks. In addition, Stein (2018) finds that untreated microentrepreneurs in Uganda are more likely to create new links with entrepreneurs who participate in a training intervention. To the best of our knowledge, the finding that people stop sharing information with their social ties after treatment is novel in the literature. The

⁴Section 2 discusses a number of reasons why search efforts could be strategic complements. Most importantly, job search consists of distinct tasks which need to be completed successfully to secure a job, and each partner may have a comparative advantage in a different task.

closest result to ours is from [Heß et al. \(2021\)](#), who show that a community-level intervention in the Gambia led to a reduction in transfers in social networks within treated villages.⁵ We further advance this literature by showing that the negative effects on social networks are stronger when the ties have similar expenditure levels at baseline. This highlights that the inequality generated by targeted interventions is a possible mechanism leading to the deterioration of social capital.

Second, we advance this literature by providing some of the first evidence for these effects in the context of job-search networks. There has been particularly little work regarding the effects of labor market and social protection policies on and through social networks. A large body of literature shows that job search effort is affected by unemployment insurance ([Marinescu, 2017](#), [Lichter, 2016](#)), and job search assistance policies ([Altmann et al., 2018](#), [Belot et al., 2015](#)).⁶ These effects could have important implications for the social networks of beneficiaries. This is particularly true for programs that may exclude some members of the social network from the receipt of benefits, such as means-tested social transfers, time-limited unemployment insurance, programs to which migrants and refugees do not have access, or age-restricted job search assistance.

Third, we advance the literature on networks and labor market outcomes by focusing on the sharing of information among unemployed job seekers. A large literature looks at the role of referrals in labor markets ([Bentolila et al., 2010](#), [Topa, 2011](#), [Burks et al., 2015](#), [Beaman and Magruder, 2012](#)).⁷ These studies often focus on networks connecting the employed to the unemployed ([Granovetter, 1973](#), [Ioannides and Datcher Loury, 2004](#), [Cingano and Rosolia, 2012](#)). The young unemployed people in our urban context regularly share information and transport expenses with their friends when looking for work. This type of network structure lacks empirical and theoretical study. We extend a class of models generally used to focus on information flows and referrals from the employed to the unemployed to allow for information flows between unemployed job seekers. Our empirical results are consistent with a strong form of complementarity in job search-effort, in line with our theoretical explanation for the existence for these networks. This is a novel finding in the job search literature. Recent experimental evidence on migration decisions, however, also reveals a strong form of strategic complementarity ([Akram et al., 2018](#)). We further add to the job search literature by endogenizing the network structure to allow for members of the network to leave if membership is no longer beneficial to them. [Bramoullé and Saint-Paul \(2010\)](#) and [Krauth](#)

⁵A related literature looks at the effects of interventions on non-participants through channels other than social networks. Examples include psychological well-being ([Haushofer et al., 2015](#)) and social preferences ([Cecchi et al., 2016](#)).

⁶The literature on the effects of welfare programs such as the earned income tax credit is more limited. However, the evidence showing large effects of these types of programs on labor supply presents good reasons to believe that job search would also be affected ([Eissa and Liebman, 1996](#), [Meyer and Rosenbaum, 2001](#)).

⁷A related literature focuses on the benefits of hiring through social networks for employers ([Dustmann et al., 2016](#)).

(2004) both develop models in which social ties can be created or severed, but maintain the assumption that job opportunities flow exclusively from the employed to unemployed.

Finally, from a methodological perspective, we show the importance of tracking geographically dispersed networks in urban areas and the limits of relying on neighbors or family members alone. Abebe et al. (2020) study the indirect effects of the intervention on a sample of control individuals residing close to program participants. Despite their geographical proximity, these individuals often have only weak social ties to treated jobseekers. Abebe et al. (2020) do not find evidence of spillover effects on this sample. Similarly, it is common in the literature to proxy social networks with family ties (e.g. Kramarz and Skans, 2014, Cruz et al., 2017). We find that very few of the job-search partners in our sample are related. These results highlight that tracking close social connections across space is necessary to develop a comprehensive view of the economic role of urban networks.

2 Job search networks in Addis Ababa

In this Section, we present some key stylised facts about social networks in Addis Ababa. We use four main sources of data: (i) the 2013 Labour Force Survey of the Central Statistical Agency of Ethiopia, (ii) the endline survey from the experimental study of Abebe et al. (2020), (iii) the network survey which we ran for this study and which is described in more detail below, and (iv) a representative survey of young people searching for jobs at vacancy boards, conducted in 2020.⁸

Fact 1. *Social networks are a widespread and effective method of job search.*

Data from the Labour Force Survey shows that 24.5 percent of jobseekers rely on social networks as their main method of job search. This makes social networks the second most popular method of job search, after visiting the job vacancy boards, which is chosen by 25.4 percent of jobseekers. At the same time, there are clear overlaps between the different methods: 85 percent of a representative sample of young people at the boards use networks to search, and 75 percent have received information about a vacancy from networks.⁹

Further, the information acquired from social networks often leads to employment. 48 percent of the employed individuals in the sample of Abebe et al. (2020) have heard about their current job through family, friends or acquaintances, while only 33 percent of individuals have found out about their current job by visiting the job boards. Referrals are also widespread. In our network baseline survey, of all the individuals working in the last seven

⁸More details about these surveys can be found in appendix Section A.1.

⁹43 percent of those who have received information said that the person who gave it to them had special information about the position. The other 57 percent say that all the information they received was publicly available.

days, 48 percent received the job or an interview for the job through a direct referral from a social contact. Similarly, 70 percent of individuals usually ask relatives, friends or acquaintances for help getting a job, and in half of these cases, this involved a direct referral to a job in the past. Importantly, the use of social networks for job search is common across all demographic groups.¹⁰

Fact 2. *Most of the social networks support comes from close friends.*

In our baseline sample, the person informing the respondent about their current job is a close friend in 67 percent of the cases and a family member in 17 percent of the cases. On average, respondents interact with this person three days a week. These patterns stand in stark contrast to the strength of weak ties hypothesis (Granovetter, 1973). Gee et al. (2017) study samples drawn from 55 countries, mostly from the developed world, and find that a single strong tie is more valuable even though most jobs are received through weak ties. Our findings show an even more prominent role for strong ties.

Fact 3. *Social network support is reciprocal and is often exchanged among unemployed people.*

In survey data that we collected from a representative sample of job-board visitors, 89 percent of people at the boards have friends who also visit the boards, and 90 percent of them have passed on information that they saw at the boards to their friends. Of those who have received information about a job vacancy, only 43 percent said that at least one person who passed them information had some special information about the vacancy. The other 57 percent only received information that was publicly available.

The exchange of information about jobs and vacancies is often reciprocal. In our network baseline survey, 80 percent of the close ties both give and receive information about jobs to and from their seeds. Further, reciprocal support is not limited to information sharing. For example, 50 percent of job search partners in our baseline sample travel together to the city centre with the seed to look for information about employment. Jobseekers often take turns to pay the transportation costs of these trips and further support each other in a number of ways. Interestingly, job-search partners often live in different neighborhoods.¹¹

¹⁰Men, migrants and individuals without tertiary education are more likely to rely on social networks (see Table H10 in the appendix). This is in line with the wider literature on social networks and job search, which emphasises the role of networks for migrants (Munshi, 2003) and individuals with lower levels of education (Wahba and Zenou, 2005). While women generally tend to be underserved by employment networks (Beaman et al. (2018) and overview in Ioannides and Datcher Loury (2004)), Seabright (2012) suggests that women are more likely to have a few strong ties rather than multiple weak ties. In Addis Ababa, men, non-migrants and educated individuals also make a substantial use of social networks in job search. Overall, our descriptive regression suggests that 95 percent of the working-age population in the city has a predicted probability of using social networks for job search above 10 percent.

¹¹The left panel of Figure A1 displays the place of residence in Addis Ababa of the individuals in Abebe et al. (2020) whom we have sampled for this paper. The right panel shows the place of residence of their job-search partners. The original study participants were sampled from randomly selected geographical clusters outside of

A large share of job-search support is exchanged among individuals who are unemployed. The median unemployed jobseeker in Abebe et al. (2020) regularly shares information with four other people, two of whom are also currently unemployed. In our baseline sample, the average job search partner has 2.5 job contacts, of whom fewer than one is employed. Again, this is contrast with standard accounts of labor market networks where most information transmission occurs from the employed to the unemployed (Calvo-Armengol and Jackson, 2004, Cingano and Rosolia, 2012). Indeed, one would think that unemployed job seekers would have reasons not to share information about vacancies: their friends might be direct competitors for those jobs. On the other hand, given the large size of the labor market in Addis Ababa—with many private sector firms advertising positions across the whole city and receiving large number of applicants—we think that the chances that any two jobseekers directly displace one another for a position is extremely unlikely. For example, Abebe et al. (2021) report that each vacancy advertised as part of their experiment in Addis Ababa receives more than one hundred applicants, that on the job boards there are tens of vacancies available for a given occupation at any point in time, and that jobseekers apply on average to only two vacancies per month. This implies that competition for any specific vacancy is likely to be limited. Ultimately, the widespread existence of job-search partnerships suggests that the benefits from being in these partnerships outweigh the (limited) costs of competition.

Fact 4. *Not all job-search partners are actively searching.*

In our baseline sample, only 34 percent of job contacts have searched for a job in the past week and 53 percent have searched for a job in the past six months (61 percent if we restrict the sample to unemployed people). Active job-search partners differ from inactive job-search partners on several dimensions: they are less likely to be in employment, they have left school later and are also more likely to be poorer (Appendix Table E2, joint p -value=0.00). The seed individuals of active and inactive job-search partners, on the other hand, tend to have similar characteristics (Appendix Table E3, joint p -value=0.58), with the exception that active job search partners tend to have seeds that are also more active in job search. As a consequence, the baseline differences between the seed individuals and their job contacts who are searching for work are much less pronounced than the differences between the seeds and their inactive job contacts (Appendix Table E4). In particular, inactive job contacts are older, more likely to work, less likely to search, and out of school for longer than the seed. We can strongly reject the test of joint orthogonality of all covariates ($p = 0.00$), suggesting

the centre of the city. Their job-search partners, on the other hand, are distributed all over the city. In total, less than 5 percent of the social contacts live within a 2 km radius of the city centre. Figure A2 displays the distribution of the distance between the place of residence of the original study participants and that of their job-search partners. The modal distance is approximately 2 km, with a mean of 3.75 km and a median of 1.6 km. This means that more than 50 percent of pairs live more than 25 minutes of walking distance apart, calculated “as the crow flies”. Actual walking times are likely to be higher.

that for seeds and inactive job contacts have different characteristics. In sum, our sample contains two types of job-search links: i) links to unemployed people who are also searching for work, and who are very similar to the seed individual; or ii) links to employed people who are not searching, and who are dissimilar to the seed.

Fact 5. *Consistent with the existence of a strategic complementarity in search effort, the returns to job search increase with access to job search networks.*

The evidence on the returns to job search in the control group suggests that there are strategic complementarities in job search. We show this by comparing the returns to an additional day of job search for individuals with a below median job-search network to those of individuals with an above median network (where we proxy the strength of a network by its size). Figure 1 shows that, for individuals with a below-median network, the returns to job search are fairly low. On the contrary, these returns are significantly higher for individuals with a strong network. This suggests that job search efforts are complements: the more unemployed individuals have access to other active jobseekers, the higher the payoff from additional job search.¹²

[Figure 1 about here.]

One key reason why partners' search efforts may be strategic complements is that securing a job requires successfully completing a number of tasks. A jobseeker has to acquire information about available vacancies, decide which jobs to target, prepare applications, take part in interviews, etc. Failure to complete one of these tasks will decrease the returns to effort in the other tasks. For instance, the effort spent preparing an application will have low returns if the jobseeker has targeted a job that does not suit their skills. Therefore, receiving support on one task by a job-search partner will increase the returns to effort on the other tasks. Moreover, partners may find it convenient to specialise in different tasks due to economies of scale or comparative advantage arising from skills, personality traits, or endowments. For example, one partner may be more conscientious and therefore better at collecting vacancy information in a timely manner, while the other partner may be extroverted, more comfortable talking to employers, and hence well-placed to coach their conscientious partner in interview skills. Consistent with specialisation across job search tasks, we find that among six pre-defined categories of job search (such as searching at the vacancy boards, in newspapers, asking friends and relatives), only 27% of jobseekers report at baseline that their main method of search is the same as that of their partner, which is slightly lower than what we would predict if pairs were formed at random.

¹²We find similar results when we disaggregate by the search effort of the partner at baseline, see Appendix Figure A3.

It is natural to think of efforts spent on the same task as strategic substitutes. However, even within the same task, there may be reasons for the efforts of the two partners to complement each other. Consider, for example, information acquisition at different vacancy boards. On the one hand, it may be possible that the returns to visiting one of these boards are lower when one's partner has already collected some job vacancy information. On the other hand, different vacancy boards may contain information about different types of jobs, and jobseekers may value having a diverse portfolio of job applications. The prospect of this stronger portfolio may make it worthwhile for the individual to start job search in the first place. In line with this, we find that at baseline 80% of our job search pairs search in different boards.

Ultimately, it is an empirical question whether, on net, job search efforts are strategic complements or substitutes. The correlational evidence presented here is consistent with strategic complementarity. Our model and experiment explore this question further.

3 The experiment

3.1 The transport subsidy

The transport subsidy consists of a monetary transfer that is available for collection in a central location in the city, three times a week. The transfer is thus conditional on reaching the centre of town, where jobseekers can visit the job vacancy boards and where many firms are located. This intervention is designed to help young jobseekers pay for the transport costs required for effective job-search and thus overcome the spatial frictions that emerge in large, congested cities (Abebe et al., 2020). The amount disbursed is calibrated to cover the cost of a return journey from the participant's place of residence to the intervention centre. Figure A4 shows the amount and duration of the subsidy.¹³ The amount available on a given visit varies by participant, ranging from 15 Ethiopian Birr (0.74 USD)¹⁴ to 30 Ethiopian Birr (1.48 USD) with a median of 20 Ethiopian Birr (0.98 USD). The duration of the subsidy is randomized across participants and ranges between 13 and 21 weeks. The intervention started in late September 2014. By February 2015 the latest batch of participants had stopped receiving the subsidy.¹⁵

3.2 The network survey

This paper is based on a survey of the job-search partners of the original program participants. We proceed in three steps. First, we randomly select 165 individuals from the treatment and

¹³Here we report data computed over the subset of original program recipients that are sampled for this study.

¹⁴Dollar amounts calculated with the average exchange rate during the intervention period from September 2014 to February 2015.

¹⁵The direct impact of the transport subsidy intervention on the recipients' outcomes is summarized in appendix Section D.1.

control group of the original study. We call these individuals the “seeds”. Second, we ask each seed the following, open-ended question: “With whom in Addis Ababa do you regularly share information about job opportunities?”¹⁶ We further ask a number of questions about the interaction between seeds and job-search partners and collect the partners’ contact details. This gives us a sample of about 1000 job-search partners. Third, we randomly select 596 job-search partners for interview. These 596 individuals constitute the main sample of this study. We conduct a baseline interview, before the start of the transport intervention, and an endline interview six months after the original interview. A timeline of events can be found in appendix Section A. We collect data on socioeconomic characteristics, labor market experience and job search decisions, measures of preferences and aspirations, as well as time use and expenditure data.

[Figure 2 about here.]

4 A model of network formation and job search

In this Section we develop a simple theoretical framework that clarifies how job search and network formation decisions are affected by a policy that subsidizes only one individual in a job-search partnership.

Our key assumption is that, when two individuals are in a partnership, the job search efforts of one person increase the chances of employment of both people in the pair. These positive externalities motivate individuals to form job search partnerships. This assumption is motivated by the intuition that there exist complementary tasks in the search process, in which different partners may specialise. Fact 5 in Section 2 presents suggestive evidence on the existence of these complementarities.

Maintaining social links is also costly. Individuals have to invest time and attention in the partnership. Further, when they share resources, there is a risk that favours will not be returned in the future. Thus, individuals have to weight the benefits of a job search partnership against its costs.

To model how individuals solve this tradeoff, we study a simple game where two job seekers — a seed individual i and a potential job partner j — make two sequential decisions. First, each individual decides whether they want to form a connection with the other job seeker. Link formation is bilateral: a connection is established only if both job seekers agree to the link. Second, after job seekers observe whether a connection has been formed, they decide how much effort to exert to find a job.

¹⁶“Regularly” is defined as exchanging information at least once per month. We do not limit the number of job-search partners that can be reported.

If a link has been formed in the first stage, each partner benefits from the search efforts of the other partner. We capture this by imposing that the probability of finding a job is a CES function of the search efforts of the two job seekers, which we denote as y_i and y_j . The parameter $p \in (0, 1]$ determines the degree of complementarity of these efforts. Further, we assume that both the marginal cost of job search (κy^s) and the marginal cost of maintaining the link ($c y^s$) increase in own search effort ($s > 1$) (evidence of the convexity of search costs is found, for example, in [DellaVigna et al. \(2017\)](#)). If a link has not been formed, job seekers do not benefit from the external effect of the other person's job search. However, they also save on the costs required to maintain the link.

We consider an intervention that reduces job search costs by a factor $\alpha \in (0, 1]$. If a job seeker does not receive the intervention, $\alpha = 1$. If a job seeker receives the intervention, $0 < \alpha < 1$: the job seeker can search at a lower cost. In the second stage, job seeker i will choose how much search effort to exert in order to maximise the following payoff function:

$$\pi_i = \begin{cases} (y_i^p + y_j^p)^{1/p} - y_i^s c - y_i^s k \alpha_i & \text{if searching in a partnership,} \\ (y_i^p)^{1/p} - y_i^s k \alpha_i & \text{if searching alone.} \end{cases} \quad (1)$$

Job seeker j solves a symmetric problem. In the first stage, jobseekers work out equilibrium search efforts and payoffs under both scenarios, and then agree to a link only if the payoff searching in a partnership is larger than the payoff searching alone. The optimal search effort when searching alone is:

$$y_i^* = \frac{1}{s \alpha_i k} \frac{1}{s-1}. \quad (2)$$

When searching in a partnership, the equilibrium level of effort is:

$$y_i^* = \left[\frac{\left(1 + z \frac{p}{p-s}\right)^{\frac{1-p}{p}}}{s(c + \alpha_i k)} \right]^{\frac{1}{s-1}}, \quad (3)$$

where $z = \left(\frac{c + \alpha_j k}{c + \alpha_i k}\right)$.

This analysis illustrates how, in a partnership, the person with the lower search costs exerts more effort in equilibrium. To see this, consider a simple case where $\alpha_i < \alpha_j = 1$, which we depict in the left panel of [Figure 3](#): the more we subsidize the costs of the seed individual, the larger the asymmetry in optimal effort. This is intuitive: when costs are asymmetric and search effort is the same, the marginal return to search effort is not equalized. To reach an equilibrium, the low-cost individual has to exert more effort, while the high-cost

individual applies less effort – a form of free riding.¹⁷ If the link is maintained, then the high-cost individual naturally benefits from the subsidy given to their partner, as shown in the middle panel of Figure 3.

Intuition 1. *If the social connection does not break, there are positive spillovers: the reduction in search costs for i will increase j 's payoff.*

Free-riding reduces the value of being in a partnership relative to searching alone. The right panel of Figure 3 illustrates this for a case where, when search costs are equal, both individuals prefer searching together than searching alone. In this case, a sufficiently large subsidy to the search costs of the seed individual makes searching alone more attractive. As a result, the subsidized individual breaks the partnership.

[Figure 3 about here.]

Intuition 2. *Subsidizing the search costs of one individual in a job search pair decreases the value of the partnership due to free riding. This can motivate the treated job seeker to break the link.*

How does the break-up of the partnership affect the other partner? This depends on whether search efforts are strategic complements or substitutes. If efforts are substitutes, losing a partner will incentivize the untreated job seeker to increase search effort. On the other hand, if efforts are complements, the untreated job seeker will exert less effort when searching alone compared to when searching in a partnership.

Formally, for the case where $\alpha_i < \alpha_j = 1$, effort in a partnership is greater than effort when searching alone when $p < \frac{1}{1 + \frac{\ln(\frac{c+k}{k})}{\ln(2)}}$. If $c = k$, this condition reduces to $p < 1/2$, which implies strategic complementarity (in our framework, search efforts are strategy complements whenever $p < 1$).

Intuition 3. *For a sufficiently strong strategic complementarity between search efforts, the untreated individual exerts less effort when searching alone than when searching in a partnership.*

This third intuition suggests that an intervention that causes a job-sharing link to be severed could lead to a reduction in search effort among the untreated partner.¹⁸

¹⁷We describe this situation as one of ‘free riding’ since the high-cost partner does not fully match the higher search effort of the low-cost partner. This does not imply that, when we reduce the cost of the first partner, the search effort of the second partner actually falls compared to the control condition. As long as the partnership is maintained, the second partner will also increase search effort due to the complementarity, but will do so in a more limited way compared to the treated partner.

¹⁸A final implication of our model is that, when the complementarity is stronger, partnerships are harder to break. This is because a stronger complementarity limits the free-riding incentive of the untreated partner. However, as argued above, when high-complementarity partnerships do break, they cause a larger fall in the search effort of the untreated partner. We do not explore these predictions empirically, since we lack an accurate empirical proxy of the strength of the complementarity, but we flag this as an interesting area for future work.

An important final observation is that our model captures relationships where the exchange of support and information is reciprocal. In this framework, once a partnership is formed, each partner benefits from the job search effort of their peer. Thus, our model is unsuitable to describe partnerships where support and information flow only in one direction. Asymmetric partnerships are not common in our study. If they occur, they are likely to be motivated by different considerations — e.g. one individual may derive a social benefit from the partnership — and are likely to respond differently to the transport subsidy intervention. For a similar reason, our model is also not appropriate to analyze partnerships that have highly unequal endowments and search efforts. These partnerships are unlikely to be motivated by the desire to leverage the complementarities of job search. Rather, their function may be to generate a social benefit. We would thus not expect these partnerships to easily break-up in response to the transport subsidy, nor do we expect their break-up to lead to a fall in search effort. These observations motivate our heterogeneity analysis in Section 6.

5 Data and empirical strategy

5.1 Balance and attrition

We test for balance with respect to (i) the characteristics of the seeds, (ii) the characteristics of the job-search partners, and (iii) the nature of the interaction between seeds and their partners.

Baseline differences in the characteristics of the treatment and control seeds are reported in appendix Table F5. Overall balance is good, as we cannot reject the test of joint orthogonality of all covariates ($p = 0.13$). The only significant differences at five percent level are the higher share of females and the lower share of seeds who ever worked for pay in the treatment group. At a ten percent significance level, we have a lower proportion of casual workers and of individuals who recently searched at the job boards in the treatment group, as well as some small differences in the share of minority ethnicities.

Appendix Table F6 shows baseline balance in the characteristics of the job-search partners. We cannot reject the test of joint orthogonality of all covariates ($p = 0.60$).¹⁹ The only variables significantly different at a five percent or stronger level are whether the individual was born outside of Addis Ababa and had permanent work in the past seven days. We control for all unbalanced (at a ten percent or stronger level) baseline characteristics of the job-search partners in our analysis.

Lastly, we look at balance in the nature of the interaction between seeds and their partners. Table 1 shows that all variables are all balanced at the ten percent level, indicating that

¹⁹Due to the large number of covariates and the associated risk of overfitting, we exclude all covariates that have a correlation above 0.5 with any of the other covariates from the test of joint orthogonality.

the experimental randomization was also successful for interactions in the job-search pairs. The test of joint orthogonality cannot be rejected (at $p = 0.80$).

[Table 1 about here.]

We have low levels of attrition. 540 job search partners (91 percent) from our baseline sample of 596 are surveyed at endline. Attrition is very similar for the job search partners of treated seeds (90.5 percent resurveyed) and untreated seeds (91 percent resurveyed). Appendix Table G8 shows that attrited individuals are more likely to be female and to have worked in an office in the week before the baseline interview, while appendix Table G9 shows that these effects do not differ by treatment status of the seed, hence do not compromise the integrity of the experiment. Figure 2 gives an overview of our study sample. Interestingly, about half of the individuals would satisfy the eligibility criteria of the original study (age 18-29, at least high school education, no permanent employment). The other individuals tend to be older, more educated, and better positioned in the labor market.

5.2 Empirical strategy

We estimate the effects of the intervention on job-search partners using the following AN-COVA estimator:²⁰

$$y_{i,t=1} = \beta_0 + \beta_1 y_{i,t=0} + \beta_2 Treat_{i,t=1} + \beta_3 X_{i,t=0} + \varepsilon_{i,t}, \quad (4)$$

where

$$Treat_{i,t=1} = \begin{cases} 1 & \text{if the job-search partner's seed received transport subsidy;} \\ 0 & \text{if the job-search partner's seed did not receive transport subsidy.} \end{cases}$$

y_{it} is the outcome of interest of job-search partner i at time t ($t = 0$ refers to the pre-intervention period, and $t = 1$ to the post-intervention period), and $X_{i,t=0}$ is a vector of pre-treatment baseline controls. We study impacts on different measures of social interaction, job search and employment. For each family of tests, we also report effects for a summary index of all outcome measures in the family. Our choice to include the vector of pre-treatment baseline covariates enables us to control for minor baseline imbalances and to increase the precision of our estimates. We cluster the standard errors of all regressions at the level of the seed, the original unit of randomization.

²⁰We did not register a pre-analysis plan, but rather view this study as an explorative exercise that departs from more traditional analysis of experimental data.

We estimate heterogeneous impacts of the intervention on job-search partners with the following equation:

$$y_{i,t=1} = \beta_0 + \beta_1 y_{i,t=0} + \beta_2 Treat_{i,t=1} + \beta_3 Het_{i,t=0} + \beta_4 Het_{i,t=0} \cdot Treat_{i,t=1} + \beta_5 X_{i,t=0} + \varepsilon_{i,t}, \quad (5)$$

where $Het_{i,t=0}$ splits the sample in two groups on the basis of the binary characteristic Het , and β_4 is the treatment effect difference between the two groups of subjects.

Our key dimension of heterogeneity is whether the job-search partner of the seed was an active jobseeker at baseline or not. As discussed in Section 4, our key hypotheses are formulated for pairs of jobseekers where both individuals search for work and benefit from the job search of their partner. These are the typical partnerships in our context. However, in some cases we observe that the partner nominated by the seed is not an active jobseeker. These partnerships are not adequately captured in our model, since they are likely to be maintained for reasons other than the exploitation of job search complementarities. Further, we do not necessarily expect these partnerships to respond to the intervention in a way similar to those partnerships where both individuals search for work. The heterogeneity analysis thus enables us to focus on the part of the sample for which we have the sharpest theoretical predictions.

6 Results

In this Section, we study the effects of the transport subsidy on the job-search partners of treated individuals. We report results on social interaction, job search and employment outcomes. All outcome variables are defined in the appendix Section B.

6.1 Social interaction between seeds and their job-search partners

We do not find evidence that the intervention increases social interaction between seeds and their job-search partners. We show this in Table 2, for different dimensions of social interaction. In particular, the fraction of partners that share transport expenses with their seed decreases by a marginally insignificant 7 percentage points (over a control mean of 24 percent). Further, the fraction of partners that share information with the seed decreases by an insignificant 4 percentage points (over a control mean of 41 percent).

[Table 2 about here.]

6.1.1 Active job-search partners

As discussed in Section 2, the seeds' job contacts can be either actively searching for a job themselves or not. We hypothesize that treatment effects are stronger for those job-search partners who are looking for work at baseline, and run heterogeneous treatment effect regressions by whether job-search partners use the job vacancy boards at baseline.²¹

We find that the subsidy substantially reduces social interaction between treated seeds and their active job-search partners. The results of our analysis, reported in Table 3 (column (1)), show that the interaction between treated seeds and active job-search partners decreases substantially in almost all dimensions: the social interaction index, a standardised index of all outcome variables in the table, decreases by 0.5 standard deviations, which is a large effect. In terms of the detailed outcomes, job-search partners share fewer information with their seeds (-20 pp.), spend less time with their seeds (-15 pp.), travel to the centre less often (-19 pp.), and share travel expenses less often (-18 pp.). These effects are very large and statistically significant. Active job-search partners spend seven fewer hours per month with the seeds, when those seeds are treated. In our baseline sample, a one-kilometre increase in the geographical distance between the seed and the partner is associated with a reduction in the time they spend together of approximately one hour. The impact of the subsidy on time spent is thus comparable to doubling the baseline mean distance (3.75 km) between job-search partners.

We also find some suggestive evidence that the size of the overall job contact network decreases by 19 percent (over a baseline mean of 2.17 job contacts). These findings indicate a clear disruption of information sharing and other forms of social interaction between seeds and their job-search partner. Further, the job-search partners do not fully offset this by establishing new connections.

[Table 3 about here.]

6.2 Job search

We find that the intervention reduces the job search intensity of the partners of treated seeds, in the full sample of job-search partners. We show this by investigating both job search in the last seven days and in the last 30 days in Table 4. The search index decreases by a significant 0.2 standard deviations. Both recent overall job search and job search at the vacancy boards decrease by seven percentage points, respectively. These are declines of 21 percent and 41 percent, respectively, compared to the endline search levels of the control group. These

²¹A more detailed rationale for this analysis is given in Section 4. In appendix Section H.5, we show that our results are robust to different definitions of 'active' baseline searchers. And in appendix section H.6, we show that active search at baseline remains the key heterogeneity dimension when controlling for heterogeneity in gender, education, and wealth.

are large effects, especially when contrasted with the direct effects of the intervention on program participants.²² Recent job search using social networks decreases by 3 percentage points, however this effect is statistically insignificant. The negative coefficient, however, is consistent with the decrease in the overall size of the job-search network that we have documented in the previous Section.

[Table 4 about here.]

We observe a strong shift away from vacancy board job search in the past month that is even larger in economic and statistical significance than for the seven-day recall period. Besides, the search at work agencies and at central locations (such as central squares in the city) goes significantly down by approximately 2-4 percentage points. Search strategies that *do not* depend on commuting to the centre of Addis Ababa are not affected by the transport subsidy: neither job search at work sites (such as construction sites that can be found everywhere in the city, not just in the centre) nor searching the internet for jobs decrease significantly.

6.2.1 Active job-search partners

Table 5 shows the impacts on the job-search partners' job search behavior, split by whether the partner is actively looking for a job at baseline. The negative spillover results of the transport subsidy on the job search of the social contacts of the subsidy recipients are almost entirely driven by active job-search partners. The search index decreases by 0.45 standard deviations, which is large and significant. The coefficients on overall job search, board search, and social network job search are similarly large and in the first two cases statistically significantly negative. For the one-month recall period, we similarly find a stronger decrease in job board and city centre search for the group of active job-search partners. The difference in the coefficient for search at work sites follows this pattern, but we fail to reject that it is equal to zero.

[Table 5 about here.]

At baseline, both the seed and the job-search partner mutually exchange information about jobs. Our negative findings on the partners' job search suggest a strong complementarity in job search behavior. Once the partnership with the seed is broken, vacancy information from the seed stops coming in. As a consequence, own vacancy information obtained by the job-search partners become less useful, and own job search decreases.

The negative effects on job search are very large, in particular for the sample of job contacts actively searching for a job at baseline. When interpreting the magnitude, it is

²²Abebe et al. (2020) report the direct effects on program beneficiaries: overall job search increase by 12.5 percent (or five pp.) and job search at the job vacancy boards increases by nearly a third (or nine pp.).

important to recall that the median job-search partner in our sample has only 2 job contacts at baseline, the seed individual being one of them. Losing one (the seed) out of two information-sharing partners is thus equivalent to a 50 percent reduction in the job search network, which can plausibly explain the magnitude of the negative search impacts.

6.3 Employment

We report the findings for the the job-search partners' employment status in Table H11. Abebe et al. (2020) document an insignificant, four percentage points increase in employment rates for program beneficiaries and a larger, significant increase for a subgroup of jobseekers with poor employment prospects. During the study period, the seeds also experience an insignificant, 2.5 percentage point increase in employment.

We also do not find effects on the employment of job search partners. This includes whether individuals are engaged in any work, whether they have a permanent job or a formal job, and their monthly earnings (Table H11).

6.3.1 Active job-search partners

We once more split our results by whether the job-search partner is actively looking for a job at baseline. Now, Table H12 shows patterns in a similar direction as for social interactions and the partners' job search. We find economically meaningful, but statistically insignificant decreases in the treated partners' probability of having any work or permanent work in the last seven days, or any formal work over the whole treatment period (ten to eleven percentage points each). The employment index decreases by an insignificant 0.2 standard deviations. Thus, the significant decrease in job search of the treated partners directly leads to an overall lower likelihood of employment.

6.4 Using LASSO to improve precision and power

All our main results are robust to the inclusion of an additional set of controls selected through a double LASSO procedure (Belloni et al., 2014). This estimator enables us to obtain more precise estimates and hence to run tests that are more powered. We find that, despite the greater power, we are still unable to detect significant impacts for the sample of individuals who were not searching for work actively at baseline. This gives us further confidence in these null results. Further, we gain some precision when we estimate impacts on the employment index for the active jobseekers (we now have a marginally significant effect) and when comparing the estimates of active and non-active individuals (which are now statistically different for all outcome indices). We report these results in Table H34 in the appendix.

6.5 Mediation analysis

To more formally test the hypothesis that the decrease in search behavior is caused by a disruption of the job search network, we follow the recommendations on mediation analysis by [Acharya et al. \(2016\)](#). We compute the Average Controlled Direct Effect (ACDE) of the transport subsidy on the search behavior of the job-search partners who were actively looking for a job at baseline, fixing the potential mediators of interest. The ACDE captures the impact of an intervention when a particular mediator is not allowed to respond to the treatment. We can thus assess the importance of a given mediator by comparing the original treatment effect to the ACDE.

We show this comparison in Figure 4. In the left panel, we find that a large share of the negative impact on the job search index of the job-search partners can be explained by the decrease in social interactions. The decrease in social interactions with the seed individual explains 39 percent of the effect, and all social interactions together explain almost 80 percent of the decrease in the job-search partners' search behavior. Since the search index includes job search in social networks, we show in the right panel of Figure 4 that we get very similar results when the outcome variable is search at the job boards. The results of our mediation analysis are thus not driven by the fact that the outcome variable includes search through social networks.

[Figure 4 about here.]

6.6 The spatial dimensions of our findings

In the appendix Section D.2, we take a detailed look at the spatial dimension of the social network impact of the job search assistance. Broadly, we do not find significant heterogeneity at the geographical level, but the negative impacts on job search and social interaction tend to be higher for job-search partners living closer to their seeds. In terms of distance to the city centre, the negative impacts on search and social interaction tend to be larger for individuals living farther away from the city centre.

7 Mechanisms

In what follows, we explore a number of potential mechanisms that may drive these results. In line with our framework in Section 4, we present empirical evidence in support of the hypothesis that the intervention undermines job-search partnerships by creating inequality in job-search costs. We then investigate a set of alternative explanations for the break-up in job-search partnerships. We are unable to find evidence that this is due to (i) a decrease in seed free time, (ii) the relocation of some seeds to new neighbourhoods, (iii) an increase in

the seed's ability to link to higher-value job-search partners. Finally, we explore a number of alternative mechanisms that could generate the observed decrease in job search effort. We do not find empirical support for the hypotheses that job search drops due to (i) a discouragement effect, and (ii) the inability to rely on the seed to finance job-search fixed costs (as opposed to the more general strategic complementarity in search efforts that we posited in the model).

7.1 Are the impacts on job-search partnerships and effort due to the inequality between partners generated by the intervention?

Our framework in Section 4 shows that increasing inequality in job-search costs can break up job-search partnerships. If job-search efforts are strategic complements, the partnership break-up will in turn result in a decrease in the search effort of the untreated partner. As discussed at the end of Section 4, we hypothesise that the partnerships that have relatively equal job-search costs at baseline will be most susceptible to the inequality brought about by the interventions, since this inequality decreases the incentives of the seed to maintain the partnership. On the other hand, those partnerships that can sustain high levels of inequality prior to the intervention are likely to be motivated by different considerations. Hence, they should be more resilient to the changes in inequality caused by the transport subsidy. In this section, we test this hypothesis leveraging baseline data on individual characteristics and job search. As described in Section 5.1, the job-search partners are not restricted to meet the eligibility criteria of the transport subsidy sample from which our seeds were randomly drawn.²³ This means that our sample includes job-search pairs where both individuals have similar economic status and demographics—and thus similar job search costs—and job-search pairs where the two individuals differ markedly along these dimensions. Further, in some of the pairs information is exchanged reciprocally, whereas in other pairs only one person obtains information from the other. While we expect people who do not share information to share other types of support, we do interpret two-way information sharing as a further proxy of similarity in job-search costs. In line with our model, we expect the negative effects of the subsidy to be stronger for pairs that have similar characteristics at baseline and for pairs where information exchange is reciprocal.

We run two sets of regressions. The first set splits the sample based on whether the seed and the job-search partner reciprocally exchange information. The second set splits the sample based on the difference in expenditure level at baseline between the two partners. Expenditure is a meaningful variable to use as it is related to an individual's ability to finance job search. For both sets of regressions, we focus on active job-search partners, as this is the

²³Namely: Between 18-29 years of age, at least a high school degree, not in permanent employment, living outside of the city centre of Addis Ababa.

group that drives the treatment effects. Overall, both sets of regressions support our hypothesized mechanism.²⁴ However, we note that while the effects are always in the hypothesized direction, the difference between the impacts for the two groups is not always statistically significant. We describe the results in detail in the following two subsections.

7.1.1 Baseline reciprocity in information exchange

Table H13 shows impacts on social interaction by whether information is shared reciprocally between the seed and the partner. In line with our hypothesis, we find that treatment effects are largely driven by pairs where information sharing is reciprocal. As a result of the intervention, individuals in these pairs share less information with each other, are less likely to travel together to the city center and to share expenses, and spend considerably less time together (on the intensive margin). The untreated person in the pair also experiences a significant decrease in the overall size of her job network. On the contrary, when information flows only one way, effects are much smaller in magnitude and insignificant (though we cannot reject that they are the same). In Table H14, we display results for job search. The results give further support to our hypothesized mechanisms since, when information exchange is reciprocal, the spillover effects of the intervention on the untreated partner are more pronounced: the negative effect on the overall search index is more than twice the size of the effect we document when information flows only one way. For two specific types of job search — search at the job boards and search using social networks — the difference is both large and statistically significant.

7.1.2 Baseline economic status

Table H15 shows impacts on social interaction by similarity in baseline expenditure. We find that pairs that have similar expenditure travel to the city less frequently, share expenses less often, exchange less money and spend less time together (on the intensive margin). These effects are typically larger than the effects for dissimilar pairs, but the only statistically significant difference shows up in the impact on sharing money. In Table H16, we display results for job search. In line with our hypotheses, we find that negative impacts on job search are more pronounced among partners who have similar baseline expenditure. Overall job search and search at the job boards decline by almost two thirds; network job search also decreases. The difference between the impacts of similar and dissimilar pairs is marginally insignificant. A similar pattern can be seen for the one-month recall variables, with those jobseekers that were similar to their seeds at baseline responding more strongly negatively to their seeds' treatment.

²⁴We also studied heterogeneity with respect to the difference in education levels, a potential indicator of search effectiveness. The results for this sample split are inconclusive.

7.2 Alternative explanations for the break-up of job-search partnerships

7.2.1 Do treated individuals have less time to interact with their partners because of employment or job search?

One possibility is that treated seeds have less time to interact with their job-search partners because they found employment. We have two pieces of evidence that are inconsistent with this explanation. First, treated seeds are not significantly more likely to have work at endline. Second, we do not find significant or qualitative differences between the impacts on the partners of unemployed seeds and those on the partners of seeds who were employed at any point between baseline and endline (appendix Tables H25 to H26). Similarly, treated seeds may have less time to interact with their partners because they spend more time searching for work. We offer several pieces of evidence that do not support this explanation. First, the median *return* travel time from the seed's place of residence to the city centre is about one hour. While this is a significant amount of time, it clearly leaves ample time for other activities. Second, there are no interaction effects between the duration of the seed's travel to the city centre and the impacts of the interventions on the seeds' job-search partners. To show this, we split our sample based on the median baseline distance of the seed's residence to the city centre, which determines how much time an extra trip takes, and run separate regressions. The results are presented in appendix Tables H27 and H28. We find that the decrease in search is if anything more pronounced for job-search partners of seeds with a below median baseline distance to the centre. The decrease in sharing of job information is similar in both samples, above and below the median baseline distance. Overall, this evidence does not support the hypothesis that seeds do not interact with their partners due to the time spent on job search.

7.2.2 Does relocation reduce interaction between seeds and job-search partners?

Second, we study whether subjects change their place of residence in a way that favors the break-up of job-search partnerships. For example, treated seeds may find work away from their place of residence and then move closer to their new job. Alternatively, the partners of treated seeds may move instead, for example, because they want to search in an area that is different from that of the treated seeds. We do not find any evidence in support of these explanations. First, very few seeds change their place of residence. Of the 165 seed individuals, two move out of Addis Ababa and 14 move within the capital at endline. Appendix Table H29 shows that there are no treatment effects on the probability of moving. Second, changes in the place of residence are also infrequent among the partners of the seeds and, importantly, the partners of treated seeds are not more likely to move compared to the partners of untreated seeds. In the six months between the baseline and follow-up survey,

30 job search partners move out of Addis Ababa temporarily or permanently: 20 partners of untreated seeds, ten partners of treated seeds. The most frequent reason cited is work migration (temporary or permanent, 57 percent), followed by pursuing additional education (20 percent), caring for family members (20 percent), and holiday (3 percent). Further, 35 job search partners relocate within Addis Ababa over the course of the intervention (20 partners of untreated seeds, 15 of treated seeds). Of these 35 movers within the capital, the average distance to the city centre *after* moving is 6.8 km and hence very similar to the mean distance to the city centre that we find at baseline for the whole sample (7.0 km). The 35 partners move to a new location that is on average 2.7 km away from their prior residence (median: 1.9 km). Only one single individual moves from the suburbs to the city centre.

7.2.3 Do treated individuals make new connections to “higher-value” individuals?

Third, we explore whether the subsidy gives treated seeds the opportunity to connect to individuals who provide better labor market support than their peers. This, in turn, may induce the seeds to break their existing partnerships. To investigate this, we leverage the data from [Abebe et al. \(2020\)](#). First, and most importantly, we do not find any significant evidence that treated individuals are more likely to interact with employed peers (Table A.23, second coefficient in [Abebe et al. \(2020\)](#)). Second, in Figure A7 we show that treated individuals are less likely to talk to their friends. This is true not only during the intervention, but also in the months after treatment. If we produce a similar impact trajectory for the seed individuals only, we also find a negative effect on talking to friends – albeit a much larger one of almost five percentage points, which is almost statistically significant despite the small sample (appendix Figure A8).²⁵ Overall, we interpret this as evidence that the seeds have not re-wired their links towards higher-value partners in a major way.

7.3 Alternative explanations for the decrease in job search among partners

7.3.1 Does the intervention discourage the job-search partners of treated seeds?

One alternative reason why the job-search partners of treated seeds search less is that they may become discouraged, as they feel unable to compete with treated jobseekers. Our analysis does not support this explanation. First, we have shown that job-search partners and seeds tend to live far away from each other. Hence, it is not likely that they are competing for the same limited pool of jobs found in their local labor market. Second, by looking at the effects on the job-search partners’ job market expectations and aspirations in appendix Tables H17 and H18, we can rule out that the intervention changes the job-search partners’ labor

²⁵This is not an artificial small sample effect: the results are very similar when using the complete control group sample ($N \simeq 800$) instead of the 86 control group seeds.

market expectations — neither reservation wages or expected wages change significantly, nor does the number of job offers expected in the near future. In addition, Table H30 displays the change in the job-search partners' beliefs, attitudes and life satisfaction. While there are no changes in overall happiness, we find that the intervention actually positively affects the two variables measuring the job-search partners' feeling of independence. Appendix table H31 shows that these effects are again primarily driven by the active baseline searchers. Taken together, these result do not support the discouragement hypothesis.

A related possibility is that the employment effects among treated seeds are weaker than expected, despite a considerable increase in job search, leading their job-search partners to become more pessimistic about the returns to job search effort. We test this hypothesis by studying the relationship between the job search intensity of the partners and their expectations about future job offers. If we observe a weakening of this correlation among the partners of treated seeds, this would support the view that they have become more pessimistic about the returns to job search effort. In appendix Tables H32 and H33, we show that the correlation between job search intensity and expected offers among the partners of treated seeds is similar to the correlation among the partners of untreated seeds. If anything, the correlation is (insignificantly) stronger for the partners of treated seeds. This evidence is inconsistent with this the hypothesis that the partners of treated seeds are more pessimistic about the returns to search effort.

7.3.2 Are the former partners of treated seeds unable to fund a fixed job-search cost?

One final possibility is that the former partners of treated seeds are now unable to fund a fixed job-search cost. Our model assumes that the decrease in job search is due to the strategic complementarity of the efforts of the two partners. However, in principle, it would be possible to observe a similar negative impact on job search if the primary function of the partnerships was to finance a fixed job-search cost, for example, the cost of reaching the city centre. Under this alternative model, once individuals reach the city centre, peer search efforts may be strategic substitutes or may even exert a negative externality on the job finding probability of the partner, if individuals compete for the same vacancies. We present two pieces of evidence inconsistent with this explanation. First, we document observationally that individuals who live close to the city centre benefit from having stronger networks. Figure 1 in Section 2 shows that individuals with stronger networks have higher returns from search effort. Appendix Figure A9 documents that this conclusion is virtually unchanged when we look at individuals who live below the median distance from the city centre. This supports the existence of search effort complementarities that are not limited to the financing of transport expenses. Second, we present an additional mediation analysis where we exclude “sharing transport expenses” from the index of social interaction with the seed. We

find that this revised index mediates a virtually identical proportion of the treatment effect on job search as the index that includes sharing transport expenses. Consistently with this, if we run a mediation analysis using an indicator for sharing transport expenses, we find that this indicator mediates only 6 percent of the total effect. In other words, the drop in sharing transport expenses does not seem to be the main driver of the fall in job search. We present the results of this additional mediation analysis in Appendix Figure A10. Overall, this evidence does not support the fixed job-search cost hypothesis.

8 Conclusion

We study the exchange of information about job opportunities in the social networks of young jobseekers in Addis Ababa, Ethiopia. We find that a job-search assistance intervention induces program participants to interact less frequently with their job-search partners who are actively seeking employment at baseline. Program participants and their active partners exchange less information about job vacancies and also interact less along many other dimensions. Further, the job-search partners of treated individuals reduce job-search effort, suggesting a strong complementarity of job-search effort among job-search partners. We hypothesize that the intervention disrupts job-search networks because it increases inequality in the access to information within the pairs of jobseekers, making it harder to sustain job-search partnerships. Consistently with this, we find that the effects are stronger for pairs of friends with similar levels of baseline expenditure.

These findings generate leads for future research. First, a long-standing literature in the social sciences laments the erosion of social interaction that is often associated with economic development (Polanyi, 1944, Putnam, 2000). It would be important to assess whether people intrinsically value the kinds of social connections that we study in this paper—that is, the friendships and interactions built specifically around job search. If they do, then the break-up of job-search partnerships would create a loss of social welfare. An alternative view is that at least some network connections are purely instrumental: once the underlying market failures are addressed, these forms of interaction disappear with no loss of utility for the people involved. The welfare implications of our findings largely depend on this point.

A second and final point to explore is whether people are able to forecast network changes and whether they try to prevent these changes with side payments. For example, the recent literature has found evidence of a sophisticated ability to forecast future behavior among professional traders (Alevy et al., 2007) and households (Sourdin, 2008). In the context of job-search networks and active labor market policies, sophisticated people would understand that if their partner were to receive job-search support from an employment program, the partnership may break. To prevent this from happening, they could pay their job-search part-

ner on condition that they would not join the program. Sophistication and side payments of this kind would have important consequences for the ability of policymakers to treat selected individuals in the network.

References

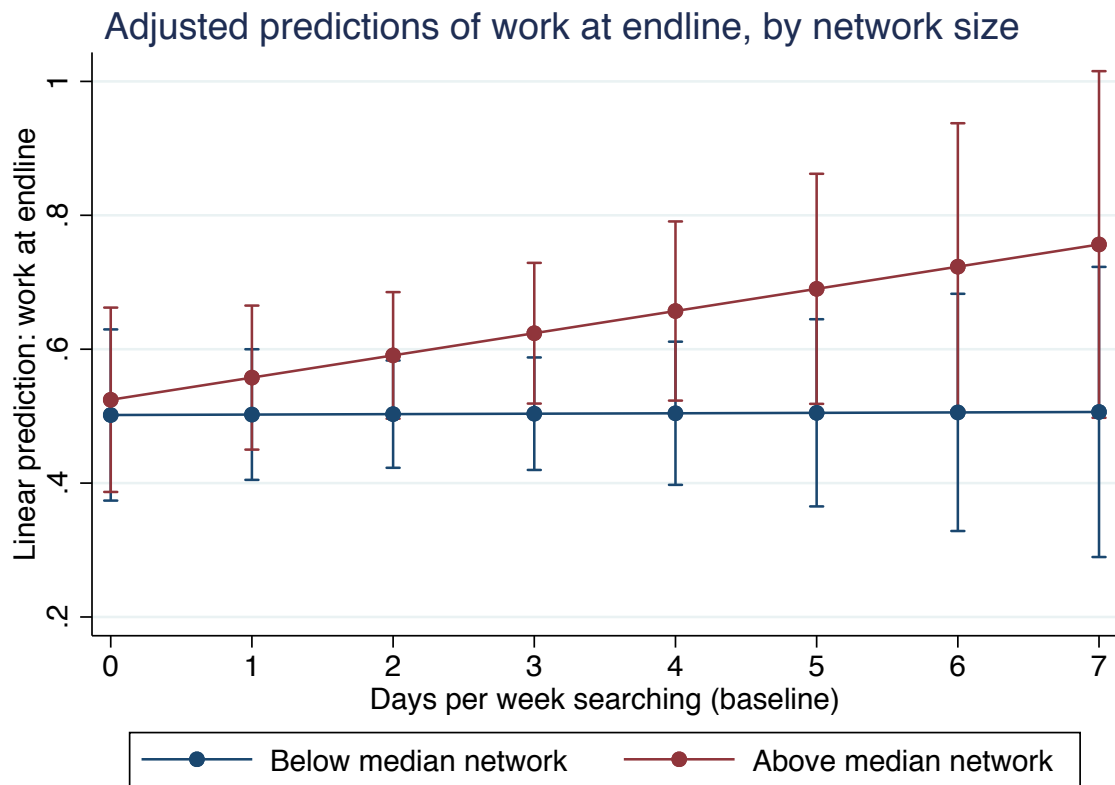
- Abadie, A., M. M. Chingos, and M. R. West (2017). Endogenous Stratification in Randomized Experiments. Working paper, MIT.
- Abebe, G., A. S. Caria, and E. Ortiz-Ospina (2021, June). The selection of talent: Experimental and structural evidence from ethiopia. *American Economic Review* 111(6), 1757–1806.
- Abebe, G., S. Caria, M. Fafchamps, P. Falco, S. Franklin, and S. Quinn (2020). Anonymity or Distance? Job Search and Labour Market Exclusion in a Growing African City. *Review of Economic Studies*.
- Acharya, A., M. Blackwell, and M. Sen (2016). Explaining Causal Findings Without Bias: Detecting and Assessing Direct Effects. *American Political Science Review* 110(3), 512–529.
- Akram, A. A., S. Chowdhury, and A. M. Mobarak (2018). Effects of emigration on rural labor markets. Technical report, National Bureau of Economic Research.
- Alevy, J. E., M. S. Haigh, and J. A. List (2007). Information Cascades: Evidence from a Field Experiment with Financial Market Professionals. *The Journal of Finance* 62(1), 151–180.
- Altmann, S., A. Falk, S. Jäger, and F. Zimmermann (2018). Learning about job search: A field experiment with job seekers in germany. *Journal of Public Economics* 164, 33–49.
- Banerjee, A., A. Chandrasekhar, E. Duflo, and M. O. Jackson (2018). Changes in Social Network Structure in Response to Exposure to Formal Credit Markets. Working paper, Stanford University.
- Beaman, L. (2016). Social networks and the labor market. In *The Oxford Handbook of the Economics of Networks*.
- Beaman, L., N. Keleher, and J. Magruder (2018). Do Job Networks Disadvantage Women? Evidence from a Recruitment Experiment in Malawi. *Journal of Labor Economics* 36(1), 121–157.
- Beaman, L. and J. Magruder (2012). Who Gets the Job Referral? Evidence from a Social Networks Experiment. *The American Economic Review* 102(7), 3574–3593.
- Belloni, A., V. Chernozhukov, and C. Hansen (2014). High-Dimensional Methods and Inference on Structural and Treatment Effects. *Journal of Economic Perspectives* 28(2), 29–50.
- Belot, M., P. Kircher, and P. Muller (2015). Providing advice to job seekers at low cost: An experimental study on on-line advice.

- Bentolila, S., C. Michelacci, and J. Suarez (2010). Social Contacts and Occupational Choice. *Economica* 77(305), 20–45.
- Bramoullé, Y. and G. Saint-Paul (2010). Social networks and labor market transitions. *Labour economics* 17(1), 188–195.
- Burks, S. V., B. Cowgill, M. Hoffman, and M. Housman (2015). The Value of Hiring through Employee Referrals. *The Quarterly Journal of Economics* 130(2), 805–839.
- Calvo-Armengol, A. and M. O. Jackson (2004). The Effects of Social Networks on Employment and Inequality. *The American Economic Review* 94(3), 426–454.
- Card, D., J. Kluve, and A. Weber (2018). What works? a meta analysis of recent active labor market program evaluations. *Journal of the European Economic Association* 16(3), 894–931.
- Cecchi, F., J. Duchoslav, and E. Bulte (2016). Formal Insurance and the Dynamics of Social Capital: Experimental Evidence from Uganda. *Journal of African Economies* 25(3), 418–438.
- Cingano, F. and A. Rosolia (2012). People I Know: Job Search and Social Networks. *Journal of Labor Economics* 30(2), 291–332.
- Comola, M. and S. Prina (2017). Treatment Effects Accounting for Network Changes. Working paper, Case Western Reserve University.
- Crépon, B., E. Duflo, M. Gurgand, R. Rathelot, and P. Zamora (2013). Do Labor Market Policies Have Displacement Effects? Evidence from a Clustered Randomized Experiment. *The Quarterly Journal of Economics* 128(2), 531–580.
- Cruz, C., J. Labonne, and P. Querubín (2017, October). Politician Family Networks and Electoral Outcomes: Evidence from the Philippines. *American Economic Review* 107(10), 3006–37.
- DellaVigna, S., A. Lindner, B. Reizer, and J. F. Schmieder (2017). Reference-dependent job search: Evidence from Hungary. *The Quarterly Journal of Economics* 132(4), 1969–2018.
- Dupas, P., A. Keats, and J. Robinson (2017, 12). The Effect of Savings Accounts on Interpersonal Financial Relationships: Evidence from a Field Experiment in Rural Kenya. *The Economic Journal* 129(617), 273–310.
- Dustmann, C., A. Glitz, U. Schönberg, and H. Brücker (2016). Referral-Based Job Search Networks. *The Review of Economic Studies* 83(2), 514–546.

- Eissa, N. and J. B. Liebman (1996). Labor supply response to the earned income tax credit. *The Quarterly Journal of Economics*.
- Gee, L. K., J. J. Jones, C. J. Fariss, M. Burke, and J. H. Fowler (2017). The Paradox of Weak Ties in 55 Countries. *Journal of Economic Behavior & Organization* 133, 362–372.
- Granovetter, M. S. (1973). The Strength of Weak Ties¹. *American Journal of Sociology* 78(6), 1360–1380.
- Haushofer, J., J. Reisinger, and J. Shapiro (2015). Your Gain is My Pain: Negative Psychological Externalities of Cash Transfers. Working paper, Princeton University.
- Heß, S., D. Jaimovich, and M. Schündeln (2021, 06). Development Projects and Economic Networks: Lessons from Rural Gambia. *The Review of Economic Studies* 88(3), 1347–1384.
- Ioannides, Y. M. and L. Datcher Loury (2004, December). Job Information Networks, Neighborhood Effects, and Inequality. *Journal of Economic Literature* 42(4), 1056–1093.
- Kramarz, F. and O. N. Skans (2014). When Strong Ties Are Strong: Networks and Youth Labour Market Entry. *The Review of Economic Studies* 81(3), 1164–1200.
- Krauth, B. V. (2004). A dynamic model of job networking and social influences on employment. *Journal of Economic Dynamics and Control* 28(6), 1185–1204.
- Lichter, A. (2016). Benefit duration and job search effort: Evidence from a natural experiment.
- Marinescu, I. (2017). The general equilibrium impacts of unemployment insurance: Evidence from a large online job board. *Journal of Public Economics* 150, 14–29.
- Meyer, B. D. and D. T. Rosenbaum (2001). Welfare, the earned income tax credit, and the labor supply of single mothers. *Quarterly Journal of Economics* 116(3).
- Munshi, K. (2003). Networks in the Modern Economy: Mexican Migrants in the U. S. Labor Market. *The Quarterly Journal of Economics* 118(2), 549–599.
- Polanyi, K. (1944). *The Great Transformation*, Volume 2. Beacon Press Boston.
- Putnam, R. D. (2000). Bowling Alone: America’s Declining Social Capital. In *Culture and politics*, pp. 223–234. Springer.
- Sapin, M., D. Joye, C. Wolf, A. C. Y.-C. F. E. K. P. V. M. Johannes Andersen, Yanjie Bian, and T. W. Smith (2020). The issp 2017 social networks and social resources module. *International Journal of Sociology* 50(1), 1–25.

- Seabright, P. (2012). *The War of the Sexes*. Princeton University Press.
- Sourdin, P. (2008). Pension Contributions as a Commitment Device: Evidence of Sophistication Among Time-Inconsistent Households. *Journal of Economic Psychology* 29(4), 577–596.
- Stein, M. (2018). Re-Forming Links: Effects of a Randomized Training on Business Network Changes among Micro-Enterprises in Uganda. *Working Paper*.
- Topa, G. (2011). Labor Markets and Referrals. Volume 1 of *Handbook of Social Economics*, pp. 1193–1221. Elsevier North Holland Amsterdam.
- Wahba, J. and Y. Zenou (2005). Density, Social Networks and Job Search Methods: Theory and Application to Egypt. *Journal of Development Economics* 78(2), 443–473.

Figure 1: Complementaries between own and network search



Notes: This figure shows the linear prediction of whether a respondent has work at endline from the number of days searching for a job at baseline. The gradient is shown separately by whether the individual's network size is below or above the median. 95% confidence intervals are shown.

Figure 2: Sample overview

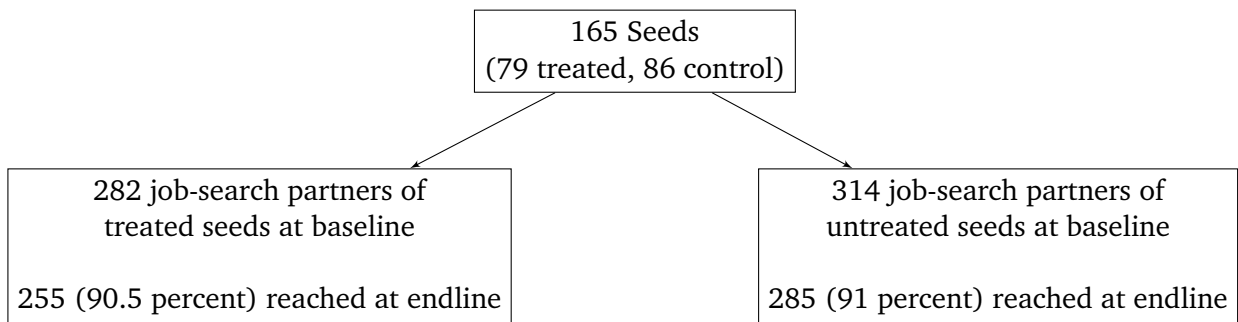
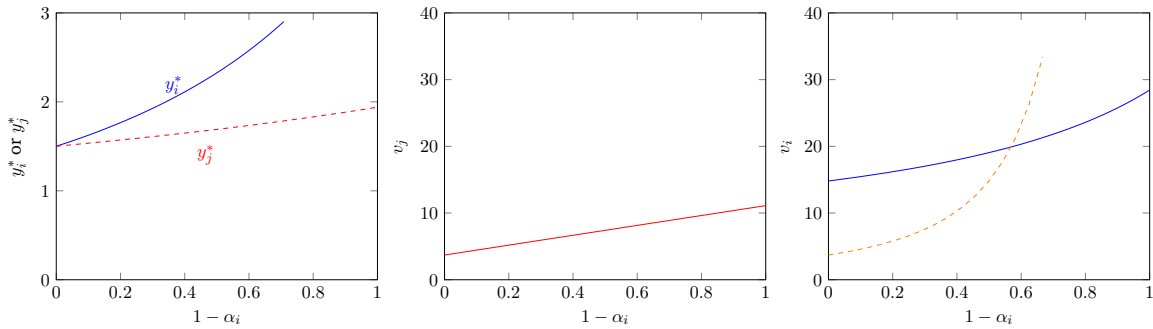
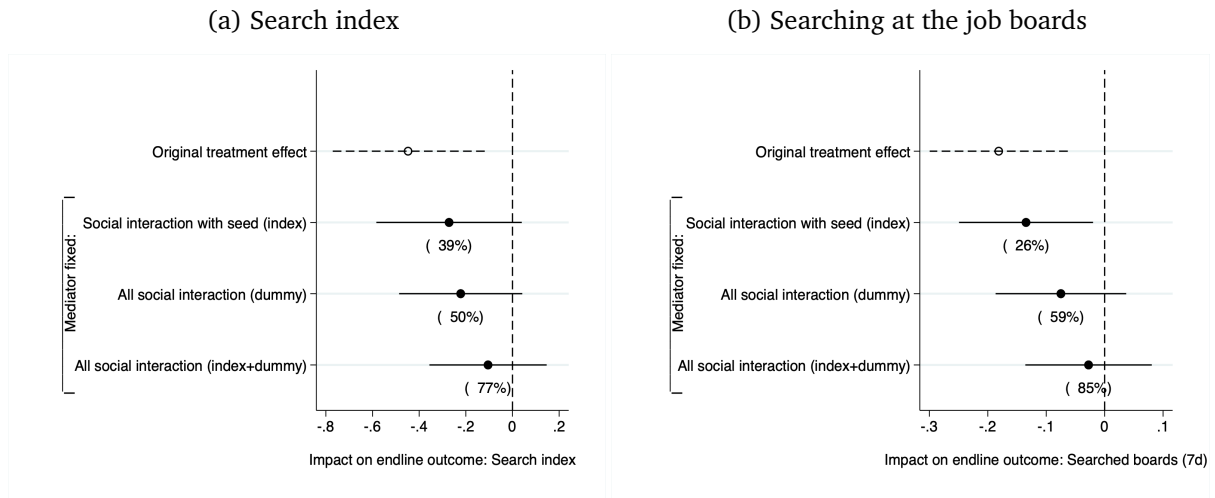


Figure 3: Search efforts and payoffs as a function of the job-search subsidy ($1 - \alpha_i$)



Notes: This figure shows various search efforts and payoffs as a function of the job-search subsidy ($1 - \alpha_i$), for the parameters $c = k = 0.2, p = 0.6, s = 1.5$. Left panel: The blue (red) solid (dashed) line shows the search effort of job-seeker i (j) as a function of the job-search subsidy ($1 - \alpha_i$), when searching in a partnership. Middle panel: The red solid line displays the payoff for job-seeker j when searching in a partnership. Right panel: The blue solid line displays the payoff for job seeker i when searching in a partnership, the orange dashed line the payoff when searching alone.

Figure 4: Mediation analysis: impact of transport subsidy on job search



Notes: This figures reports coefficient estimates and 90 percent confidence intervals of the impact of the transport subsidy on endline search outcomes of the job-search contacts. The first row reports the original treatment effect. The following rows report the Average Controlled Direct Effect (ACDE) of the intervention, obtained by fixing the mediator indicated in the row's name (Acharya et al., 2016). We can assess the importance of a given mediator by comparing the original treatment effect to the ACDE. To facilitate comparison, we report below each coefficient the share of the original treatment effect that is accounted for by the mediator. The variable “All social interaction (dummy)” is an indicator for whether the respondent has received information about a job from relatives, friends or acquaintances in the last 7 days.

Table 1: Interaction and distance between job-search partners and seeds, by seed treatment status, at baseline

	(1)	(2)	(3)	(4)	(5)	(6)
	Treatment difference	(Standard error)	Control mean	(SD)	Max pairwise difference	Obs.
Spoken (30d)	1.01	(1.27)	11.99	(9.82)	0.10	589
Travel (30d)	-0.00	(0.05)	0.50	(0.50)	0.01	592
Info from seed (ever)	0.03	(0.05)	0.82	(0.39)	0.08	592
Info to seed (ever)	-0.02	(0.02)	0.97	(0.18)	0.12	591
Lent/borrowed (ever)	-0.04	(0.06)	0.50	(0.50)	0.08	592
Distance from Seed to center	0.64	(0.46)	6.74	(3.33)	0.18	596
Distance between Seed and Peer	-0.30	(0.58)	3.87	(4.48)	0.07	594
Lives in center	-0.02	(0.02)	0.05	(0.23)	0.09	596
Same neighbourhood	0.01	(0.02)	0.04	(0.21)	0.02	596
Joint p -value	0.80					

Notes: OLS estimates of individual baseline differences by seed treatment status. The data are shown on individual peer level. Outcome variables are listed on the left. Standard errors are in column 2 and clustered by seed. Stars on the standard errors reflect unadjusted p -values. * denotes significance at 10 pct., ** at 5 pct., and *** at 1 pct. level. All monetary values are displayed in Ethiopian birr (ETB). Brackets refer to the recall period in the baseline questionnaire: d=days, m=months, y=years, ever=whole life as recall period. The distances are measured in kilometres. Life satisfaction is measured with a picture of a ladder with steps from 0 (bottom) to 10 (top), representing lowest to highest life satisfaction. Respondents point to the step where they currently see themselves on the ladder. In column 5, we calculate the pairwise difference between the two group means and divide this by the standard deviation of the variable, following Imbens (2015). The last row shows the p -value from a test for joint orthogonality of all covariates.

Table 2: Impacts on social interaction

	(1) Treatment effect	(2) Mean of control search partners (SD)	(3) Max pairwise difference	(4) Obs.
Social interaction index	-0.05 (0.11) [0.63]	0.00 (1.00)	0.05	540
Spent time with seed (30d)	0.02 (0.05) [0.67]	0.72 (0.45)	0.06	490
Travel to Addis (30d)	-0.04 (0.04) [0.37]	0.25 (0.43)	0.09	540
Shared travel expenses (30d)	-0.07 (0.04) [0.11]	0.24 (0.42)	0.18	540
Shared information (6m)	-0.04 (0.06) [0.56]	0.41 (0.49)	0.06	540
Lent/borrowed (ever)	0.04 (0.04) [0.37]	0.25 (0.44)	0.05	540
Hours spent with seed (30d)	-0.83 (2.30) [0.72]	14.37 (21.35)	0.02	490
Job network	-0.01 (0.19) [0.98]	1.49 (1.54)	0.01	540

Notes: ANCOVA estimates of job-search partner variable differences by seed treatment status. Outcome variables are listed on the left. The index is a standardised index of all outcome variables below. Regressions control for the baseline outcome as well as variables that are imbalanced at baseline. Standard errors are in parentheses and are clustered by seed individual. Stars on the coefficient estimates and brackets reflect unadjusted p -values (in brackets). p -values are in brackets. * denotes significance at 10 pct., ** at 5 pct., and *** at 1 pct. level. In column 3, we calculate the pairwise difference between the two group means and divide this by the standard deviation of the variable, following Imbens (2015). If the number of observations is smaller than 540, it is because of missing observations for the number of hours spent with the seed.

Table 3: Impacts on social interaction for active and inactive job-search partners

	(1)	(2)	(3)	(4)	(5)	(6)
	Treat. effect for Searchers at baseline	Treat. effect for non-Searchers at baseline	Treatment difference: (1)-(2)	Searchers at baseline (control)	Mean of control search partners (SD)	Obs.
Social interaction index	-0.50** (0.20) [0.01]**	0.10 (0.11) [0.37]	-0.59*** (0.20) [0.00]***	0.45*** (0.15) [0.00]***	0.00 (1.00)	540
Spent time with seed (30d)	-0.15 (0.09) [0.11]	0.07 (0.05) [0.18]	-0.23** (0.10) [0.02]**	0.07 (0.07) [0.32]	0.72 (0.45)	490
Travel to Addis (30d)	-0.19** (0.09) [0.03]**	0.01 (0.04) [0.76]	-0.20** (0.09) [0.02]**	0.17** (0.07) [0.01]**	0.25 (0.43)	540
Shared travel expenses (30d)	-0.18** (0.09) [0.04]**	-0.03 (0.04) [0.46]	-0.15* (0.09) [0.09]*	0.13** (0.07) [0.04]**	0.24 (0.42)	540
Shared information (6m)	-0.20** (0.10) [0.04]**	0.03 (0.07) [0.69]	-0.23** (0.11) [0.04]**	0.22*** (0.08) [0.01]***	0.41 (0.49)	540
Lent/borrowed (ever)	-0.08 (0.09) [0.34]	0.08* (0.04) [0.06]*	-0.16* (0.09) [0.08]*	0.11* (0.07) [0.10]*	0.25 (0.44)	540
Hours spent with seed (30d)	-6.81 (4.91) [0.17]	1.17 (2.35) [0.62]	-7.98 (5.15) [0.12]	5.09 (3.67) [0.16]	14.37 (21.35)	490
Job network	-0.42 (0.28) [0.14]	0.16 (0.22) [0.45]	-0.58* (0.33) [0.08]*	0.68*** (0.26) [0.01]***	1.49 (1.54)	540

Notes: ANCOVA estimates of job-search partner variable differences by seed treatment status. Outcome variables are listed on the left. The index is a standardised index of all outcome variables below. Regressions control for the baseline outcome as well as variables that are imbalanced at baseline. Standard errors are in parentheses and are clustered by seed individual. Stars on the coefficient estimates and brackets reflect unadjusted p -values (in brackets). p -values are in brackets. * denotes significance at 10 pct., ** at 5 pct., and *** at 1 pct. level. If the number of observations is smaller than 540, it is because of missing observations for the number of hours spent with the seed.

Table 4: Impacts on job search

	(1) Treatment effect	(2) Mean of control search partners (SD)	(3) Max pairwise difference	(4) Obs.
Search index	-0.20** (0.10) [0.04]**	-0.64 (1.09)	0.20	540
Searched job (7d)	-0.07 (0.04) [0.11]	0.34 (0.48)	0.15	540
Searched boards (7d)	-0.07** (0.03) [0.03]**	0.17 (0.38)	0.18	540
Searched in networks (7d)	-0.03 (0.05) [0.54]	0.34 (0.47)	0.07	540
Searched boards (1m)	-0.17** (0.07) [0.02]**	0.52 (0.50)	0.30	540
Searched in network (1m)	-0.07* (0.04) [0.10]*	0.72 (0.45)	0.19	540
Searched at work sites (1m)	-0.01 (0.03) [0.80]	0.15 (0.36)	0.02	540
Searched at agency (1m)	-0.03 (0.02) [0.20]	0.10 (0.30)	0.11	540
Searched at central locations (1m)	-0.02** (0.01) [0.04]**	0.02 (0.14)	0.15	540
Searched internet (1m)	0.03 (0.03) [0.32]	0.08 (0.27)	0.16	540

Notes: ANCOVA estimates of job-search partner variable differences by seed treatment status. Outcome variables are listed on the left. The index is a standardised index of all outcome variables below. Regressions control for the baseline outcome as well as variables that are imbalanced at baseline. Standard errors are in parentheses and are clustered by seed individual. Stars on the coefficient estimates and brackets reflect unadjusted p -values (in brackets). p -values are in brackets. * denotes significance at 10 pct., ** at 5 pct., and *** at 1 pct. level. In column 3, we calculate the pairwise difference between the two group means and divide this by the standard deviation of the variable, following Imbens (2015).

Table 5: Impacts on job search for active and inactive job-search partners

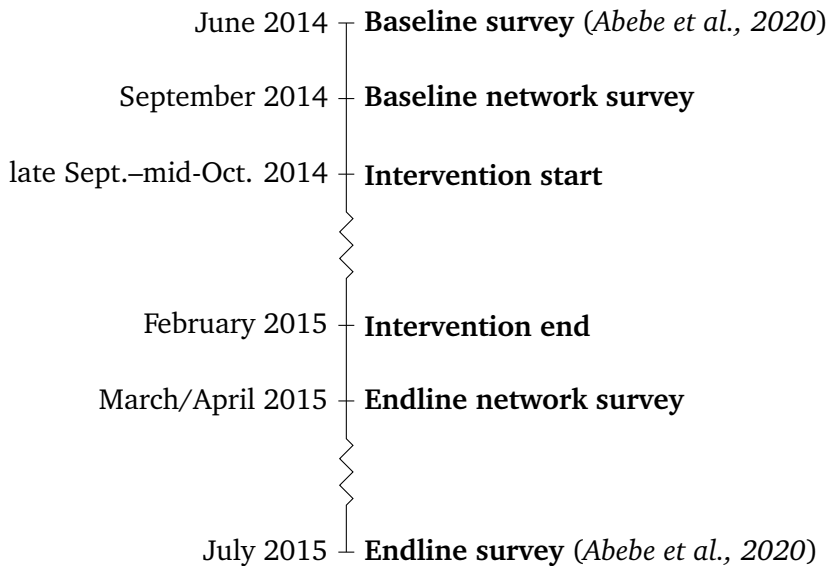
	(1)	(2)	(3)	(4)	(5)	(6)
	Treat. effect for Searchers at baseline	Treat. effect for non-Searchers at baseline	Treatment difference: (1)-(2)	Searchers at baseline (control)	Mean of control search partners (SD)	Obs.
Search index	-0.45** (0.20)	-0.11 (0.10)	-0.34 (0.21)	0.52** (0.19)	-0.64 (1.09)	540
Searched job (7d)	[0.03]** -0.22** (0.09)	[0.28] -0.02 (0.05)	[0.11] -0.19* (0.10)	[0.01]** 0.13 (0.09)	0.34 (0.48)	540
Searched boards (7d)	[0.02]** -0.18** (0.07)	[0.62] -0.04 (0.03)	[0.06]* -0.15* (0.08)	[0.14] 0.15** (0.06)	0.17 (0.38)	540
Searched in networks (7d)	[0.01]** -0.11 (0.09)	[0.27] -0.00 (0.05)	[0.06]* -0.11 (0.10)	[0.01]** 0.05 (0.08)	0.34 (0.47)	540
Searched boards (1m)	[0.20] -0.22** (0.09)	[0.99] -0.14* (0.08)	[0.23] -0.08 (0.10)	[0.51] 0.17** (0.08)	0.52 (0.50)	540
Searched in network (1m)	[0.02]** -0.04 (0.08)	[0.09]* -0.08 (0.05)	[0.39] 0.04 (0.09)	[0.02]** 0.03 (0.08)	0.72 (0.45)	540
Searched at work sites (1m)	[0.65] -0.07 (0.08)	[0.11] 0.02 (0.03)	[0.63] -0.09 (0.08)	[0.70] 0.13** (0.06)	0.15 (0.36)	540
Searched at agency (1m)	[0.38] -0.06 (0.06)	[0.50] -0.01 (0.02)	[0.28] -0.05 (0.07)	[0.02]** 0.08* (0.05)	0.10 (0.30)	540
Searched at central locations (1m)	[0.32] -0.06** (0.03)	[0.58] -0.01 (0.01)	[0.46] -0.05* (0.03)	[0.08]* 0.04 (0.03)	0.02 (0.14)	540
Searched internet (1m)	[0.04]** 0.06 (0.07)	[0.36] 0.03 (0.03)	[0.08]* 0.02 (0.07)	[0.11] 0.13** (0.05)	0.08 (0.27)	540
	[0.42] [0.24]	[0.24]	[0.77]	[0.01]**		

Notes: ANCOVA estimates of job-search partner variable differences by seed treatment status. Outcome variables are listed on the left. The index is a standardised index of all outcome variables below. Regressions control for the baseline outcome as well as variables that are imbalanced at baseline. Standard errors are in parentheses and are clustered by seed individual. Stars on the coefficient estimates and brackets reflect unadjusted p -values (in brackets). p -values are in brackets. * denotes significance at 10 pct., ** at 5 pct., and *** at 1 pct. level.

Supplementary Appendix

Contents

A Survey and intervention timeline



A.1 Survey details

1. Networks survey:

This survey is described in detail in the main paper’s subsection 3.2.

2. Endline from [Abebe et al. \(2020\)](#):

This survey is based on a random selection of geographic clusters from the list of Ethiopian Central Agency (CSA) enumeration areas, excluding clusters within 2.5 km from the city centre and those outside the city boundaries. Within selected clusters, the next step was a door-to-door sampling to construct a list of all individuals who: (i) were between 18 and 29 years of age; (ii) had completed high school; (iii) were available to start working in the next three months; and (iv) were not currently working in a permanent job or enrolled in full time education. Then, [Abebe et al. \(2020\)](#) randomly sampled individuals from this list to be included in the study. At baseline, the survey team interviewed 3,052 individuals in 179 clusters. The endline survey, which is used in this paper, was conducted as face-to-face interviews between June and August 2015.

3. Representative survey of young individuals searching for jobs at the vacancy boards:
In this survey, job-seekers were sampled directly from vacancy boards located in Addis Ababa. A total of 779 job-seekers between the ages of 18 and 29, who had at least a high school diploma, were interviewed between November 2019 and January 2020. This survey focused on reservation wages, the distribution of wages across sectors and the expected duration of unemployment.
4. 2013 Labor Force Survey:
This survey is the Ethiopian National Labor Force Survey 2013, conducted by the Ethiopian Central Statistical Agency (CSA) countrywide in 2013, with a nationally representative sample size of 240,660.

B Outcome variables

Table B1: Outcome variable definitions

<i>Variable name</i>	<i>Definition</i>
Spent time with seed (30d)	Job-search partner and seed spent any time together in past 30 days
Travel to Addis (30d)	Job-search partner and seed travelled to the city centre together in past 30 days
Shared travel expenses (30d)	Job-search partner and seed shared travel expenses in past 30 days
Shared information (6m)	Job-search partner and seed shared job information in past 6 months
Lent/borrowed (ever)	Job-search partner and seed ever lent/borrowed money from each other
Hours spent with seed (30d)	Number of hours job-search partner and seed spent together in past 30 days
Job network	Number of individuals job-search partner shares job information with
Searched job (7d)	Job-search partner searched for a job in past 7 days
Searched boards (7d)	Job-search partner searched at the job boards in past 7 days
Searched in networks (7d)	Job-search partner searched in social networks in past 7 days
Searched boards (1m)	Job-search partner searched at the job boards in past month
Searched in network (1m)	Job-search partner searched in social networks in past month
Searched at work sites (1m)	Job-search partner searched at work sites in past month
Searched at agency (1m)	Job-search partner searched at work agencies in past month
Searched at central locations (1m)	Job-search partner searched at central locations in past month
Searched internet (1m)	Job-search partner searched in the internet in past month
Worked (7d)	Job-search partner worked in past 7 days
Permanent work (7d)	Job-search partner had permanent job in past 7 days
Written agreement	Job-search partner had job with written agreement in past 7 days
Earnings	Job-search partner's monthly earnings
Alone in charge of own life's course	Answer to "How my life takes course is entirely dependent on me" (Likert scale)
Life achievements are primarily luck	Answer to "What one achieves is, in the first instance, a question of destiny and luck" (Likert scale)
Doubts own abilities during difficulties	Answer to "When I encounter difficulties in life, I often doubt my abilities" (Likert scale)
Possibilities dependent on social circumstances	Answer to "The possibilities I have in life are dependent on social circumstances" (Likert scale)
Has little control over own life	Answer to "I have little control over things which happen in my life" (Likert scale)
Life satisfaction (0-10)	Answer to "Please imagine a ladder with steps numbered from 0 at the bottom to 10 at the top. The top of the ladder represents the best possible life for you, and the bottom of the ladder represents the worst possible life for you. On which step of the ladder would you say you personally feel you stand at this time?"
Offers expected (next 4m)	Number of job offers the job-search partner expects in next 4 months
Reservation wage (in ETB)	Job-search partner's reservation wage (in ETB)
Aspired wage (in 5y, in ETB)	Job-search partner's aspired wage in 5 years (in ETB)

C Theoretical model appendix

Payoffs for i under link or no link

For job-seeker i , the payoff with optimal effort y_j^* when connected to job-seeker j is

$$\begin{aligned}
 u_i(\text{link} = 1) &= (y_i^{*p} + y_j^{*p})^{1/p} - y_i^{*s} c - y_i^{*s} k \alpha \\
 &= \left[\left(\left[\frac{\left(1 + \left(\frac{c+k}{c+\alpha k} \right)^{\frac{p}{p-s}} \right)^{\frac{1-p}{p}}}{s(c+\alpha k)} \right]^{\frac{1}{s-1}} \right)^p + \left(\left(\frac{c+k}{c+\alpha k} \right)^{\frac{1}{p-s}} \cdot \left[\frac{\left(1 + \left(\frac{c+k}{c+\alpha k} \right)^{\frac{p}{p-s}} \right)^{\frac{1-p}{p}}}{s(c+\alpha k)} \right]^{\frac{1}{s-1}} \right)^p \right]^{1/p} \\
 &\quad - \left(\left[\frac{\left(1 + \left(\frac{c+k}{c+\alpha k} \right)^{\frac{p}{p-s}} \right)^{\frac{1-p}{p}}}{s(c+\alpha k)} \right]^{\frac{1}{s-1}} \right)^s (c + \alpha k)
 \end{aligned} \tag{6}$$

In comparison, i 's payoff with optimal effort y_j^* when *not* connected to j is

$$\begin{aligned}
 u_i(\text{link} = 0) &= (y_i^{*p})^{1/p} - y_i^{*s} k \alpha \\
 &= \left(\frac{1}{s\alpha k} \right)^{\frac{1}{s-1}} - \left(\frac{1}{s\alpha k} \right)^{\frac{s}{s-1}} \alpha k
 \end{aligned} \tag{7}$$

D Additional findings

D.1 The impact of the transport subsidy on the seed individuals

In the original study of the transport subsidy (Abebe et al., 2020), the authors find relatively strong and immediate short-run effects of the transport subsidy on job search, which is measured every fortnight: job search at the vacancy boards increases significantly during the first eight fortnights after treatment, by approximately nine percentage points (which corresponds to a 30 percent increase over the control group mean of 28 percent). Overall job search does not increase quite as much, but still goes up by five percentage points or 12.5 percent during the first four months after the onset of the intervention (both at 5 percent level). Beyond that, the authors find no short-run average treatment effects on employment probability, on hours worked, on monthly earnings, or on work satisfaction, all measured during a follow-up survey in August 2015. However, there is a 5.5 percentage point increase in formal work for the subsidy recipients (at a 1 percent level), and 3.4 percentage point increase in permanent work (at 10 percent level).²⁶ Further, the authors find significant impacts on employment among the workers with the worst employment prospects (following Abadie et al., 2017), with overall employment going up by about 25 percent.

The original treatment effect on job board search from Abebe et al. (2020) is displayed in appendix Figure A5. Since we sampled our 165 seeds randomly from the complete sample of transport subsidy recipients of the main study, we expect these impacts to equally hold true for them.

D.2 Spatial dimension of results

This Section describes the spatial dimension of the indirect impact of the job search assistance. At baseline, 27 — or fewer than 5 percent — of the information sharing partners live in the city centre of Addis Ababa — 17 are friends of untreated seeds and ten are connected to treated seeds. Even though this number of central dwellers is small, it is possible that spillover effects look differently for individuals that already live close to the vacancy boards (as discussed in Section 2). First, when estimating the main specification 4 controlling for whether a job-search partner lives in the city centre, we get virtually identical results, which is not surprising, given that central residence is not imbalanced across treatment groups. Second, when simply excluding centrally living job-search partners, our results also remain

²⁶While the effect on formal work holds for both males and females if the results are split up by gender, the effects on permanent work are concentrated among women. Additionally, the authors find heterogeneous impacts by educational level, with the effects on permanent work being driven by jobseekers with only high-school education.

almost entirely unchanged in terms of direction, size and significance levels.²⁷ In a third step, we estimate heterogeneous treatment effects by a) whether a job-search partner lives in the centre at baseline and b) the distance of the job-search partner's residence to the city centre. The results, presented in appendix tables H19-H24, show that the negative spillover effects for job search and communication are mostly driven by the majority of partners living outside the city centre, i.e. those partners who rely on shared trips to and information exchange from the centrally located vacancy boards,²⁸ and—for the results on social interactions—by partners with an above-mean distance to the city center.

Figures A6 display non-parametric regressions of the previously discussed job search and partner-seed interaction outcomes on the distance between the partner's and seed's place of residence.²⁹ In appendix Figure A6, we can see that most of the negative impacts on recent (seven-day) job search are borne by those job-search partners living relatively close to their seeds (top three graphs). While there often seems to be a reversal of the effect taking place for distances above eight kilometres, it is important to keep in mind that the 75th percentile of distance is at 5.9 km, so the higher distances in the graphs are supported by only few observations. For the longer search horizons (behavior in past month, bottom six graphs of appendix Figure A6), some negative effects are supported over the whole distribution (job board search), while others are also stronger for search pairs living closer to each other. In terms of partner-seed interactions (middle graphs 4-9), a similar reversal seems to be in place for the exchange of job information: while the overall effect is insignificantly negative, the negative effect becomes significant for closely living search pairs, but then becomes strongly positive (yet remaining insignificant) for pairs living more than ten kilometres apart. Again, this only applies to a small sample of only 10 percent of information sharers, but it is nonetheless interesting to see that the negative partner-seed communication and interaction effects of the job search assistance mostly affect pairs living close to each other, while there is weak evidence of an opposite trend for pairs living very far apart.

E Summary statistics

²⁷Results for both previous steps are left out due to similarity to the main results, but are available from authors at request.

²⁸The one exception is job search at agencies, which decreases much more strongly for centrally living job-search partners of treated seeds. However, this seems to be a mostly artificial effect of the small sample of only 23 central residents at endline.

²⁹We run kernel-weighted (epanechnikov) local polynomial regressions of the variable on the y-axis on distance between partner and seed, by seed treatment status.

Table E2: Baseline differences for active and inactive job-search partners

	(1) Active searcher difference	(2) (Standard error)	(3) Mean of inactive searchers	(4) (SD)	(5) Max pairwise difference	(6) Obs.
Age	-0.82	(0.86)	25.52	(6.51)	0.13	596
Female	-0.11	(0.05)**	0.41	(0.49)	0.23	596
Degree	0.13	(0.05)**	0.16	(0.36)	0.32	596
Vocational Training	0.11	(0.05)**	0.24	(0.43)	0.24	596
Post-Secondary Degree	-0.12	(0.05)**	0.84	(0.37)	0.30	596
Born outside Addis	-0.07	(0.05)	0.41	(0.49)	0.14	596
Amhara	0.01	(0.05)	0.49	(0.50)	0.01	596
Oromo	0.01	(0.05)	0.22	(0.41)	0.03	596
Worked (7d)	-0.19	(0.05)***	0.54	(0.50)	0.38	596
Permanent work (7d)	-0.07	(0.03)**	0.17	(0.38)	0.18	596
Satisfied with work	-0.13	(0.03)***	0.23	(0.42)	0.33	596
Written agreement	-0.04	(0.05)	0.22	(0.41)	0.10	596
Applied to temporary jobs	0.31	(0.05)***	0.14	(0.35)	0.76	596
Applied to permanent jobs	0.40	(0.05)***	0.16	(0.37)	0.92	596
Uses CV for applications	0.46	(0.05)***	0.15	(0.36)	1.05	596
Uses certificates	0.50	(0.04)***	0.17	(0.38)	1.11	596
Received job by interview	-0.01	(0.04)	0.14	(0.35)	0.02	596
Office work (7d)	-0.06	(0.03)*	0.18	(0.39)	0.16	596
Offers expected (next 4m)	0.62	(0.26)**	1.52	(1.66)	0.33	520
Life satisfaction (0-10)	-0.36	(0.17)**	4.55	(1.93)	0.19	594
Expenditure (7d)	-164.76	(56.77)***	548.97	(771.48)	0.23	596
Savings	-886.75	(1294.32)	5607.47	(15962.07)	0.06	542
Monthly earnings	-810.14	(199.24)***	1305.90	(3585.66)	0.25	596
Reservation wage (in ETB)	-489.60	(200.79)**	2377.31	(2882.84)	0.19	588
Aspired wage (in 5y, in ETB)	-5152.21	(4581.65)	12619.64	(95008.95)	0.06	575
Trip to center (7d)	0.25	(0.22)	2.30	(2.56)	0.10	566
Works away from home	0.06	(0.04)*	0.83	(0.37)	0.18	596
In full-time education	-0.04	(0.02)**	0.07	(0.26)	0.17	596
In part-time education	0.03	(0.03)	0.14	(0.35)	0.08	596
In informal training	0.01	(0.03)	0.09	(0.29)	0.04	596
Searched job (7d)	0.85	(0.02)***	0.15	(0.35)	1.80	596
Searched job (6m)	0.62	(0.03)***	0.38	(0.49)	1.24	569
Ever searched wage job	0.32	(0.02)***	0.68	(0.47)	0.74	596
Searched boards (1m)	0.63	(0.02)***	0.37	(0.48)	1.27	596
Searched in networks (7d)	0.74	(0.04)***	0.14	(0.35)	1.61	596
Married	-0.07	(0.04)*	0.21	(0.41)	0.18	596
Lives with parents	0.11	(0.06)**	0.41	(0.49)	0.23	596
Years since school	-2.00	(0.84)**	5.73	(5.82)	0.35	523
Joint <i>p</i> -value	0.00***					

Notes: OLS estimates of individual baseline differences by the job contact's active search status. The data are shown on individual peer level. Outcome variables are listed on the left. Standard errors are in column 2 and clustered by seed. Stars on the standard errors reflect unadjusted *p*-values. * denotes significance at 10 pct., ** at 5 pct., and *** at 1 pct. level. All monetary values are displayed in Ethiopian birr (ETB). Brackets refer to the recall period in the baseline questionnaire: d=days, m=months, y=years, ever=whole life as recall period. The distances are measured in kilometres. Life satisfaction is measured with a picture of a ladder with steps from 0 (bottom) to 10 (top), representing lowest to highest life satisfaction. Respondents point to the step where they currently see themselves on the ladder. In column 5, we calculate the pairwise difference between the two group means and divide this by the standard deviation of the variable, following Imbens (2015). The last row shows the *p*-value from a test for joint orthogonality of all covariates.

Table E3: Baseline differences in seed covariates for active and inactive job-search partners

	(1) Coefficient on share of contacts actively searching	(2) (Standard error)	(3) Mean for seeds without active search contacts	(4) (SD)	(5) Obs.
Number of job contacts	-0.59	(0.59)	3.03	(2.25)	165
Age	-1.11	(0.77)	23.67	(2.97)	165
Female	-0.13	(0.13)	0.58	(0.50)	165
High school	0.05	(0.12)	0.27	(0.45)	165
Preparatory school	-0.02	(0.04)	0.04	(0.19)	165
Vocational school	-0.21	(0.13)*	0.50	(0.50)	165
Diploma	0.07	(0.06)	0.04	(0.19)	165
University	0.12	(0.11)	0.15	(0.36)	165
Business	-0.01	(0.14)	0.24	(0.43)	92
Vocational	-0.23	(0.16)	0.45	(0.50)	92
Humanities	0.05	(0.10)	0.05	(0.22)	92
Worked (7 d)	0.06	(0.13)	0.37	(0.49)	165
Return job	-0.07	(0.05)	0.06	(0.25)	165
Wage empl (6 m)	-0.03	(0.13)	0.46	(0.50)	165
Self empl (6 m)	-0.03	(0.08)	0.13	(0.34)	165
Ever worked for pay	-0.06	(0.13)	0.58	(0.50)	165
Searched job (7 d)	0.19	(0.13)	0.45	(0.50)	165
Searched job (6 m)	0.12	(0.11)	0.69	(0.46)	165
Ever searched wage job	-0.25	(0.12)**	0.44	(0.50)	165
Plans to start business	-0.03	(0.03)	0.03	(0.16)	165
Potential job	-0.01	(0.05)	0.05	(0.22)	165
Searched boards (7 d)	0.25	(0.12)**	0.18	(0.39)	165
Ever searched boards	0.15	(0.12)	0.65	(0.48)	165
Lives with parents	0.15	(0.13)	0.51	(0.50)	165
Years since school	-1.01	(0.74)	3.59	(2.81)	165
Temporarily empl	0.00	(0.11)	0.22	(0.42)	165
Casual worker	0.11	(0.05)**	0.01	(0.11)	165
Contract worker	-0.11	(0.05)**	0.08	(0.27)	165
Self-employed	0.05	(0.06)	0.06	(0.25)	165
Amhara	0.01	(0.13)	0.51	(0.50)	165
Oromo	0.18	(0.11)	0.24	(0.43)	165
Tigre	-0.02	(0.06)	0.04	(0.19)	165
Guraghe	-0.06	(0.09)	0.12	(0.32)	165
Mixed	-0.02	(0.03)	0.01	(0.11)	165
Other	-0.09	(0.06)	0.08	(0.27)	165
Joint <i>p</i> -value	0.58				

Notes: OLS estimates of individual baseline differences by the job contact's active search status. The data are shown on individual seed level. Outcome variables are listed on the left. Standard errors are in column 2. Stars on the standard errors reflect unadjusted *p*-values. * denotes significance at 10 pct., ** at 5 pct., and *** at 1 pct. level. All monetary values are displayed in Ethiopian birr (ETB). Brackets refer to the recall period in the baseline questionnaire: d=days, m=months, y=years, ever=whole life as recall period. The distances are measured in kilometres. Life satisfaction is measured with a picture of a ladder with steps from 0 (bottom) to 10 (top), representing lowest to highest life satisfaction. Respondents point to the step where they currently see themselves on the ladder. The last row shows the *p*-value from a test for joint orthogonality of all covariates.

Table E4: Baseline differences between seeds and job-search partners, for active and inactive job-search partners

	(1) Mean contact-seed difference (contacts actively searching)	(2) (Standard error)	(3) Mean contact-seed difference (inactive contacts)	(4) (Standard error)	(5) Obs.
Age	1.04	(0.72)	1.62	(0.40)***	596
Female	-0.13	(0.05)**	-0.09	(0.04)**	596
High school	-0.19	(0.06)***	-0.08	(0.05)	595
Preparatory school	0.02	(0.02)	0.03	(0.02)	595
Vocational school	0.04	(0.08)	-0.12	(0.05)**	595
Diploma	0.02	(0.06)	0.03	(0.02)	595
University	0.01	(0.05)	-0.07	(0.04)*	595
Business	0.10	(0.06)	-0.00	(0.05)	158
Vocational	-0.04	(0.06)	-0.03	(0.05)	158
Humanities	-0.04	(0.07)	-0.03	(0.07)	158
Worked (7 d)	-0.09	(0.08)	0.14	(0.05)***	596
Return job	0.04	(0.02)**	0.00	(0.03)	596
Wage empl (6 m)	0.06	(0.07)	0.05	(0.05)	596
Self empl (6 m)	0.01	(0.05)	-0.00	(0.04)	596
Ever worked for pay	0.14	(0.06)**	0.24	(0.05)***	596
Searched job (7 d)	0.41	(0.06)***	-0.34	(0.05)***	596
Searched job (6 m)	0.19	(0.05)***	-0.38	(0.05)***	569
Ever searched wage job	0.71	(0.06)***	0.27	(0.05)***	596
Plans to start business	-0.01	(0.01)	0.04	(0.02)**	596
Potential job	-0.03	(0.02)	0.03	(0.04)	596
Searched boards (7 d)	0.63	(0.06)***	-0.28	(0.04)***	596
Ever searched boards	0.23	(0.05)***	-0.30	(0.05)***	596
Lives with parents	-0.03	(0.06)	-0.05	(0.05)	596
Years since school	0.06	(0.57)	2.01	(0.42)***	523
Temporarily empl	-0.10	(0.06)*	-0.02	(0.04)	596
Casual worker	-0.04	(0.04)	0.00	(0.02)	596
Contract worker	0.01	(0.02)	-0.02	(0.03)	596
Self-employed	-0.06	(0.04)	0.01	(0.03)	596
Amhara	-0.04	(0.07)	-0.00	(0.04)	590
Oromo	-0.03	(0.06)	0.01	(0.04)	590
Tigre	0.06	(0.03)**	0.01	(0.02)	590
Guraghe	-0.02	(0.04)	-0.04	(0.03)	590
Mixed	0.03	(0.02)*	-0.01	(0.02)	590
Other	0.00	(0.02)	0.03	(0.02)*	590
Joint <i>p</i> -value	0.00***				

Notes: OLS estimates of individual baseline differences between seed and job contact characteristics, by the job contact's active search status. The data are shown on individual peer level, showing the difference between job contact and seed. Outcome variables are listed on the left. Standard errors are in column 2 and clustered by seed. Stars on the standard errors reflect unadjusted *p*-values. * denotes significance at 10 pct., ** at 5 pct., and *** at 1 pct. level. All monetary values are displayed in Ethiopian birr (ETB). Brackets refer to the recall period in the baseline questionnaire: d=days, m=months, y=years, ever=whole life as recall period. The distances are measured in kilometres. Life satisfaction is measured with a picture of a ladder with steps from 0 (bottom) to 10 (top), representing lowest to highest life satisfaction. Respondents point to the step where they currently see themselves on the ladder. The last row shows the *p*-value from a test for joint orthogonality of all covariates.

F Experimental integrity

Table F5: Balance of covariates for seeds, by seed treatment status, full sample at baseline

	(1) Treatment difference	(2) (Standard error)	(3) Control mean	(4) (SD)	(5) Max pairwise difference	(6) Obs.
Number of job contacts	-0.04	(0.36)	3.67	(2.41)	0.02	165
Age	-0.34	(0.47)	23.85	(3.18)	0.11	165
Female	0.15	(0.08)**	0.45	(0.50)	0.31	165
High school	-0.09	(0.07)	0.33	(0.47)	0.19	165
Preparatory school	-0.01	(0.03)	0.03	(0.18)	0.06	165
Vocational school	0.02	(0.08)	0.40	(0.49)	0.05	165
Diploma	-0.02	(0.04)	0.07	(0.26)	0.08	165
University	0.09	(0.06)	0.17	(0.38)	0.22	165
Business	-0.04	(0.09)	0.24	(0.43)	0.10	92
Vocational	-0.13	(0.10)	0.43	(0.50)	0.27	92
Humanities	-0.07	(0.06)	0.13	(0.34)	0.22	92
Worked (7 d)	-0.02	(0.08)	0.38	(0.49)	0.03	165
Return job	-0.02	(0.03)	0.05	(0.21)	0.11	165
Wage empl (6 m)	-0.04	(0.08)	0.51	(0.50)	0.09	165
Self empl (6 m)	-0.03	(0.05)	0.13	(0.34)	0.08	165
Ever worked for pay	-0.18	(0.08)**	0.67	(0.47)	0.37	165
Searched job (7 d)	-0.04	(0.08)	0.55	(0.50)	0.08	165
Searched job (6 m)	-0.05	(0.07)	0.77	(0.42)	0.11	165
Ever searched wage job	0.05	(0.07)	0.33	(0.47)	0.11	165
Plans to start business	-0.01	(0.02)	0.02	(0.15)	0.08	165
Potential job	0.00	(0.03)	0.03	(0.18)	0.02	165
Searched boards (7 d)	-0.12	(0.07)*	0.35	(0.48)	0.27	165
Ever searched boards	0.07	(0.07)	0.69	(0.47)	0.16	165
Lives with parents	0.05	(0.08)	0.51	(0.50)	0.09	165
Years since school	-0.34	(0.45)	3.64	(2.98)	0.12	165
Temporarily empl	0.04	(0.06)	0.20	(0.40)	0.10	165
Casual worker	-0.06	(0.03)*	0.07	(0.26)	0.28	165
Contract worker	0.03	(0.03)	0.03	(0.18)	0.13	165
Self-employed	-0.03	(0.04)	0.08	(0.28)	0.12	165
Amhara	-0.04	(0.08)	0.53	(0.50)	0.08	165
Oromo	0.07	(0.07)	0.21	(0.41)	0.16	165
Tigre	0.07	(0.04)*	0.02	(0.15)	0.29	165
Guraghe	-0.10	(0.05)*	0.17	(0.38)	0.29	165
Mixed	0.00	(0.02)	0.01	(0.11)	0.01	165
Other	0.00	(0.03)	0.05	(0.21)	0.02	165
Joint <i>p</i> -value	0.13					

Notes: OLS estimates of individual baseline differences by seed treatment status. The data are shown on individual seed level. Outcome variables are listed on the left. Standard errors are in column 2. Stars on the standard errors reflect unadjusted *p*-values. * denotes significance at 10 pct., ** at 5 pct., and *** at 1 pct. level. All monetary values are displayed in Ethiopian birr (ETB). Brackets refer to the recall period in the baseline questionnaire: d=days, m=months, y=years, ever=whole life as recall period. The distances are measured in kilometres. Life satisfaction is measured with a picture of a ladder with steps from 0 (bottom) to 10 (top), representing lowest to highest life satisfaction. Respondents point to the step where they currently see themselves on the ladder. In column 5, we calculate the pairwise difference between the two group means and divide this by the standard deviation of the variable, following Imbens (2015). The last row shows the *p*-value from a test for joint orthogonality of all covariates.

Table F6: Balance of covariates for job-search partners, by seed treatment status, at baseline

	(1) Treatment difference	(2) (Standard error)	(3) Control mean	(4) (SD)	(5) Max pairwise difference	(6) Obs.
Age	-0.67	(0.72)	25.66	(6.71)	0.11	596
Female	0.06	(0.06)	0.36	(0.48)	0.13	596
Degree	0.05	(0.05)	0.16	(0.37)	0.14	596
Vocational Training	0.03	(0.05)	0.25	(0.43)	0.07	596
Post-Secondary Degree	-0.05	(0.05)	0.83	(0.37)	0.13	596
Born outside Addis	-0.16	(0.06)***	0.47	(0.50)	0.33	596
Amhara	-0.00	(0.05)	0.49	(0.50)	0.01	596
Oromo	0.06	(0.04)	0.19	(0.39)	0.15	596
Worked (7d)	-0.01	(0.05)	0.50	(0.50)	0.03	596
Permanent work (7d)	0.08	(0.03)**	0.12	(0.32)	0.21	596
Satisfied with work	-0.01	(0.03)	0.20	(0.40)	0.02	596
Written agreement	0.02	(0.04)	0.20	(0.40)	0.05	596
Applied to temporary jobs	-0.04	(0.04)	0.23	(0.42)	0.09	596
Applied to permanent jobs	0.02	(0.05)	0.25	(0.43)	0.04	596
Uses CV for applications	0.02	(0.05)	0.25	(0.43)	0.04	596
Uses certificates	0.03	(0.05)	0.27	(0.45)	0.07	596
Received job by interview	0.04	(0.04)	0.12	(0.32)	0.12	596
Office work (7d)	0.05	(0.04)	0.15	(0.36)	0.12	596
Offers expected (next 4m)	-0.18	(0.21)	1.75	(1.89)	0.10	520
Life satisfaction (0-10)	0.05	(0.20)	4.44	(1.85)	0.03	594
Expenditure (7d)	-1.81	(70.32)	512.51	(772.12)	0.00	596
Savings	-238.95	(1338.50)	5505.32	(17115.79)	0.02	542
Monthly earnings	-48.78	(278.68)	1145.48	(3634.03)	0.02	596
Reservation wage (in ETB)	-3.84	(263.42)	2266.70	(3011.99)	0.00	588
Aspired wage (in 5y, in ETB)	-4995.59	(6580.57)	13782.62	(114256.50)	0.06	575
Trip to center (7d)	0.06	(0.25)	2.33	(2.60)	0.02	566
Works away from home	0.03	(0.03)	0.83	(0.37)	0.08	596
In full-time education	0.01	(0.02)	0.06	(0.23)	0.04	596
In part-time education	0.04	(0.03)	0.13	(0.34)	0.11	596
In informal training	0.03	(0.03)	0.08	(0.27)	0.12	596
Searched job (7d)	-0.08	(0.05)	0.38	(0.49)	0.16	596
Searched job (6m)	-0.05	(0.05)	0.55	(0.50)	0.09	569
Ever searched wage job	-0.05	(0.04)	0.78	(0.42)	0.12	596
Searched boards (7d)	-0.03	(0.04)	0.24	(0.43)	0.06	596
Searched boards (1m)	0.09	(0.05)*	0.47	(0.50)	0.18	596
Searched in networks (7d)	-0.06	(0.05)	0.34	(0.47)	0.14	596
Married	0.01	(0.04)	0.19	(0.39)	0.03	596
Lives with parents	0.09	(0.06)	0.39	(0.49)	0.18	596
Years since school	-0.72	(0.72)	5.57	(5.89)	0.13	523
Joint <i>p</i> -value	0.60					

Notes: OLS estimates of individual baseline differences by seed treatment status. The data are shown on individual peer level. Outcome variables are listed on the left. Standard errors are in column 2 and clustered by seed. Stars on the standard errors reflect unadjusted *p*-values. * denotes significance at 10 pct., ** at 5 pct., and *** at 1 pct. level. All monetary values are displayed in Ethiopian birr (ETB). Brackets refer to the recall period in the baseline questionnaire: d=days, m=months, y=years, ever=whole life as recall period. The distances are measured in kilometres. Life satisfaction is measured with a picture of a ladder with steps from 0 (bottom) to 10 (top), representing lowest to highest life satisfaction. Respondents point to the step where they currently see themselves on the ladder. In column 5, we calculate the pairwise difference between the two group means and divide this by the standard deviation of the variable, following Imbens (2015). The last row shows the *p*-value from a test for joint orthogonality of all covariates.

Table F7: Balance of covariates for job-search partners, by seed treatment status and collapsed by seed, at baseline

	(1) Treatment difference	(2) (Standard error)	(3) Control mean	(4) (SD)	(5) Max pairwise difference	(6) Obs.
Age	-0.40	(0.93)	25.58	(7.59)	0.07	165
Female	0.08	(0.06)	0.37	(0.39)	0.21	165
Degree	0.13	(0.05)***	0.13	(0.27)	0.40	165
Vocational Training	0.00	(0.06)	0.30	(0.37)	0.00	165
Post-Secondary Degree	-0.12	(0.05)**	0.86	(0.27)	0.38	165
Born outside Addis	-0.09	(0.06)*	0.41	(0.40)	0.26	165
Amhara	0.03	(0.06)	0.52	(0.36)	0.09	165
Oromo	0.07	(0.04)	0.18	(0.26)	0.25	165
Worked (7d)	0.04	(0.05)	0.50	(0.35)	0.13	165
Permanent work (7d)	0.10	(0.04)**	0.11	(0.24)	0.38	165
Satisfied with work	-0.04	(0.04)	0.22	(0.27)	0.16	165
Written agreement	0.06	(0.05)	0.21	(0.30)	0.20	165
Applied to temporary jobs	-0.02	(0.05)	0.23	(0.32)	0.06	165
Applied to permanent jobs	0.07	(0.05)	0.24	(0.32)	0.20	165
Uses CV for applications	0.01	(0.05)	0.25	(0.34)	0.04	165
Uses certificates	0.05	(0.05)	0.29	(0.34)	0.15	165
Received job by interview	0.08	(0.04)**	0.11	(0.22)	0.31	165
Office work (7d)	0.11	(0.04)***	0.11	(0.20)	0.43	165
Offers expected (next 4m)	-0.46	(0.28)	2.06	(1.95)	0.26	162
Life satisfaction (0-10)	-0.09	(0.22)	4.52	(1.39)	0.06	165
Expenditure (7d)	78.91	(76.89)	453.45	(432.28)	0.16	165
Savings	595.54	(1138.48)	4770.97	(7469.80)	0.08	162
Monthly earnings	138.57	(264.72)	1069.29	(1723.97)	0.08	165
Reservation wage (in ETB)	172.90	(312.05)	2092.31	(2420.15)	0.09	165
Aspired wage (in 5y, in ETB)	-3006.77	(5027.29)	11545.87	(43626.42)	0.09	162
Trip to center (7d)	0.14	(0.27)	2.34	(1.89)	0.08	163
Works away from home	0.02	(0.04)	0.83	(0.28)	0.07	165
In full-time education	0.00	(0.02)	0.05	(0.15)	0.03	165
In part-time education	0.05	(0.03)	0.11	(0.20)	0.21	165
In informal training	0.06	(0.03)*	0.08	(0.17)	0.27	165
Searched job (7d)	-0.07	(0.06)	0.40	(0.37)	0.20	165
Searched job (6m)	-0.03	(0.06)	0.55	(0.36)	0.09	163
Ever searched wage job	-0.03	(0.04)	0.77	(0.30)	0.12	165
Searched boards (7d)	-0.03	(0.05)	0.26	(0.31)	0.11	165
Searched boards (1m)	0.08	(0.05)	0.50	(0.36)	0.22	165
Searched in networks (7d)	-0.05	(0.06)	0.36	(0.37)	0.15	165
Married	0.03	(0.05)	0.17	(0.30)	0.11	165
Lives with parents	0.07	(0.06)	0.42	(0.40)	0.18	165
Years since school	-0.27	(0.64)	5.07	(4.57)	0.07	160
Joint p -value	0.18					

Notes: OLS estimates of individual baseline differences by seed treatment status. The data are shown on individual peer level averages, collapsed by seed. Outcome variables are listed on the left. Standard errors are in column 2. Stars on the standard errors reflect unadjusted p -values. * denotes significance at 10 pct., ** at 5 pct., and *** at 1 pct. level. All monetary values are displayed in Ethiopian birr (ETB). Brackets refer to the recall period in the baseline questionnaire: d=days, m=months, y=years, ever=whole life as recall period. The distances are measured in kilometres. Life satisfaction is measured with a picture of a ladder with steps from 0 (bottom) to 10 (top), representing lowest to highest life satisfaction. Respondents point to the step where they currently see themselves on the ladder. In column 5, we calculate the pairwise difference between the two group means and divide this by the standard deviation of the variable, following Imbens (2015). The last row shows the p -value from a test for joint orthogonality of all covariates.

G Attrition

Table G8: Job-search partner baseline predictors of attrition

	(1)	
	Job-search partner attrited between baseline and endline	
Treated seed	-0.050	(0.299)
Age	-0.002	(0.023)
Female	1.189***	(0.310)
Vocational Training	0.166	(0.393)
Post-Secondary Degree	-0.082	(0.445)
Born outside Addis	0.079	(0.441)
Amhara	-0.661	(0.362)
Oromo	-0.497	(0.408)
Worked (7d)	-0.667	(0.562)
Permanent work (7d)	0.315	(0.547)
Satisfied with work	-0.075	(0.496)
Written agreement	0.068	(0.597)
Applied to temporary jobs	-0.443	(0.446)
Applied to permanent jobs	-0.343	(0.593)
Uses CV for applications	0.623	(0.712)
Uses certificates	0.139	(0.861)
Received job by interview	-1.117	(0.606)
Office work (7d)	0.899*	(0.449)
Expenditure (7d)	0.000	(0.000)
Works away from home	1.107	(0.717)
In full-time education	-0.221	(0.705)
In part-time education	0.603	(0.368)
In informal training	0.078	(0.470)
Searched job (7d)	-0.790	(0.977)
Ever searched wage job	-0.240	(0.543)
Searched boards (7d)	-0.089	(0.706)
Searched boards (1m)	-0.000	(0.512)
Searched in networks (7d)	1.057	(0.856)
Married	0.151	(0.462)
Lives with parents	-0.371	(0.485)
Constant	-3.135**	(1.149)
Number of observations	596	

Notes: Marginal effects from a logit regression of individual-level job-search partner attrition indicators on demographics. Standard errors are shown in parentheses and are clustered on seed level. Stars on the coefficient estimates reflect unadjusted p -values. * denotes significance at 10 pct., ** at 5 pct., and *** at 1 pct. level.

Table G9: Job-search partner baseline predictors of attrition, by seed treatment status

	(1)		(2)	
	Job-search partner attrited between baseline and endline		Difference by seed treatment status	
Treated seed	-1.565	(2.457)		
Treated seed=0 × Age	0.012	(0.035)		
Treated seed=1 × Age	-0.033	(0.049)	-0.045	(0.060)
Treated seed=0 × Female	0.852	(0.516)		
Treated seed=1 × Female	1.556**	(0.535)	0.704	(0.744)
Treated seed=0 × Vocational Training	0.070	(0.650)		
Treated seed=1 × Vocational Training	0.338	(0.552)	0.268	(0.853)
Treated seed=0 × Post-Secondary Degree	0.097	(0.669)		
Treated seed=1 × Post-Secondary Degree	-0.175	(0.743)	-0.271	(1.000)
Treated seed=0 × Born outside Addis	0.544	(0.600)		
Treated seed=1 × Born outside Addis	-0.193	(0.590)	-0.737	(0.841)
Treated seed=0 × Amhara	-1.498**	(0.552)		
Treated seed=1 × Amhara	0.318	(0.644)	1.816	(0.848)*
Treated seed=0 × Oromo	-1.464*	(0.713)		
Treated seed=1 × Oromo	0.449	(0.715)	1.912	(1.010)
Treated seed=0 × Worked (7d)	-2.050	(1.072)		
Treated seed=1 × Worked (7d)	0.645	(0.811)	2.695	(1.345)*
Treated seed=0 × Permanent work (7d)	-0.126	(1.449)		
Treated seed=1 × Permanent work (7d)	0.074	(0.967)	0.200	(1.742)
Treated seed=0 × Satisfied with work	0.370	(0.948)		
Treated seed=1 × Satisfied with work	-0.564	(0.773)	-0.934	(1.224)
Treated seed=0 × Written agreement	-0.542	(1.256)		
Treated seed=1 × Written agreement	-0.016	(1.042)	0.526	(1.632)
Treated seed=0 × Applied to temporary jobs	-0.125	(0.698)		
Treated seed=1 × Applied to temporary jobs	-1.471	(1.052)	-1.346	(1.262)
Treated seed=0 × Applied to permanent jobs	0.258	(1.116)		
Treated seed=1 × Applied to permanent jobs	-1.783	(1.200)	-2.041	(1.638)
Treated seed=0 × Uses CV for applications	2.177	(1.137)		
Treated seed=1 × Uses CV for applications	-0.324	(1.062)	-2.501	(1.555)
Treated seed=0 × Uses certificates	-0.695	(1.129)		
Treated seed=1 × Uses certificates	1.582	(1.598)	2.277	(1.956)
Treated seed=0 × Received job by interview	-1.488	(1.463)		
Treated seed=1 × Received job by interview	-0.657	(1.025)	0.832	(1.786)
Treated seed=0 × Office work (7d)	1.891*	(0.940)		
Treated seed=1 × Office work (7d)	0.586	(0.773)	-1.305	(1.217)
Treated seed=0 × Expenditure (7d)	0.000	(0.000)		
Treated seed=1 × Expenditure (7d)	-0.000	(0.001)	-0.001	(0.001)
Treated seed=0 × Works away from home	0.158	(1.001)		
Treated seed=1 × Works away from home	2.223	(1.217)	2.065	(1.576)
Treated seed=0 × In full-time education	0.267	(0.997)		
Treated seed=1 × In full-time education	-1.205	(1.259)	-1.472	(1.606)
Treated seed=0 × In part-time education	1.004	(0.668)		
Treated seed=1 × In part-time education	0.658	(0.665)	-0.346	(0.943)
Treated seed=0 × In informal training	0.543	(0.778)		
Treated seed=1 × In informal training	-0.323	(0.776)	-0.867	(1.099)
Treated seed=0 × Searched job (7d)	-0.798	(1.231)		
Treated seed=1 × Searched job (7d)	-10.947	(647.582)	-10.148	(647.583)
Treated seed=0 × Ever searched wage job	0.284	(0.656)		
Treated seed=1 × Ever searched wage job	-1.049	(0.819)	-1.333	(1.050)
Treated seed=0 × Searched boards (7d)	-1.013	(1.088)		
Treated seed=1 × Searched boards (7d)	0.013	(0.945)	1.027	(1.441)
Treated seed=0 × Searched boards (1m)	-0.364	(0.685)		
Treated seed=1 × Searched boards (1m)	0.531	(0.809)	0.895	(1.060)
Treated seed=0 × Searched in networks (7d)	0.453	(1.146)		
Treated seed=1 × Searched in networks (7d)	12.012	(647.582)	11.559	(647.583)
Treated seed=0 × Married	-0.056	(0.654)		
Treated seed=1 × Married	0.522	(0.657)	0.577	(0.927)
Treated seed=0 × Lives with parents	-0.453	(0.666)		
Treated seed=1 × Lives with parents	-0.435	(0.589)	0.018	(0.889)
Constant	-2.621	(1.628)		
Number of observations	596			

Notes: Marginal effects from a logit regression of individual-level job-search partner attrition indicators on demographics. Standard errors are shown in parentheses and are clustered on seed level. Stars on the coefficient estimates reflect unadjusted *p*-values. * denotes significance at 10 pct., ** at 5 pct., and *** at 1 pct. level.

H Additional tables and mechanism checks

Table H10: Demographic predictors of using social networks for job search, from Ethiopian Labour Force Survey 2013

	(1)
	Uses social networks for job search
Age	-0.00155 (0.00128)
Female	-0.0710** (0.0232)
Migrant	0.0652** (0.0243)
High school	-0.0333 (0.0274)
Above high school	-0.155*** (0.0408)
Constant	0.297*** (0.0261)
<i>N</i>	1423

Notes: OLS estimate of a binary variable indicating whether an individual uses social networks to find work on a range of demographic characteristics. Standard errors are in parentheses. Ethiopian Labour Force Survey (2013) data for adults (17-64 years of age) from Addis Ababa. * denotes significance at 10 pct., ** at 5 pct., and *** at 1 pct. level.

H.1 Additional results

Table H11: Impacts on employment

	(1)	(2)	(3)	(4)
	Treatment effect	Mean of control search partners (SD)	Max pairwise difference	Obs.
Employment index	0.01 (0.10) [0.91]	0.43 (1.06)	0.07	540
Worked (7d)	-0.01 (0.04) [0.79]	0.70 (0.46)	0.02	540
Permanent work (7d)	-0.01 (0.04) [0.71]	0.25 (0.43)	0.07	540
Written agreement	0.01 (0.04) [0.88]	0.29 (0.45)	0.08	540
Monthly earnings	104.16 (169.10) [0.54]	1553.75 (1738.63)	0.05	540

Notes: ANCOVA estimates of job-search partner variable differences by seed treatment status. Outcome variables are listed on the left. The index is a standardised index of all outcome variables below. Regressions control for the baseline outcome as well as variables that are imbalanced at baseline. Standard errors are in parentheses and are clustered by seed individual. Stars on the coefficient estimates and brackets reflect unadjusted p -values (in brackets). p -values are in brackets. * denotes significance at 10 pct., ** at 5 pct., and *** at 1 pct. level. In column 3, we calculate the pairwise difference between the two group means and divide this by the standard deviation of the variable, following Imbens (2015).

Table H12: Impacts on employment for active and inactive job-search partners

	(1)	(2)	(3)	(4)	(5)	(6)
	Treat. effect for Searchers at baseline	Treat. effect for non-Searchers at baseline	Treatment difference: (1)-(2)	Searchers at baseline (control)	Mean of control search partners (SD)	Obs.
Employment index	-0.19 (0.21) [0.38]	0.09 (0.11) [0.42]	-0.28 (0.23) [0.23]	0.27* (0.16) [0.09]*	0.43 (1.06)	540
Worked (7d)	-0.10 (0.09) [0.30]	0.01 (0.05) [0.78]	-0.11 (0.11) [0.31]	0.04 (0.07) [0.53]	0.70 (0.46)	540
Permanent work (7d)	-0.10 (0.08) [0.22]	0.02 (0.04) [0.70]	-0.11 (0.08) [0.18]	0.11* (0.06) [0.07]*	0.25 (0.43)	540
Written agreement	-0.07 (0.09) [0.48]	0.04 (0.04) [0.40]	-0.10 (0.09) [0.27]	0.12* (0.07) [0.07]*	0.29 (0.45)	540
Monthly earnings	-3.48 (325.76) [0.99]	156.51 (186.84) [0.40]	-159.99 (362.29) [0.66]	255.23 (265.38) [0.34]	1553.75 (1738.63)	540

Notes: ANCOVA estimates of job-search partner variable differences by seed treatment status. Outcome variables are listed on the left. The index is a standardised index of all outcome variables below. Regressions control for the baseline outcome as well as variables that are imbalanced at baseline. Standard errors are in parentheses and are clustered by seed individual. Stars on the coefficient estimates and brackets reflect unadjusted p -values (in brackets). p -values are in brackets. * denotes significance at 10 pct., ** at 5 pct., and *** at 1 pct. level.

Table H13: Impacts on social interaction by whether the baseline exchange of information is reciprocal

	(1)	(2)	(3)	(4)	(5)	(6)
	Treat. effect for two-way info flow at baseline	Treat. effect for non-two-way info flow at baseline	Treatment difference: (1)-(2)	Two-way info flow at baseline (control)	Mean of control search partners (SD)	Obs.
Social interaction index	-0.59*** (0.21) [0.01]***	-0.09 (0.44) [0.84]	-0.50 (0.47) [0.30]	0.06 (0.30) [0.85]	0.32 (1.07)	123
Spent time with seed (30d)	-0.17 (0.11) [0.13]	-0.10 (0.20) [0.63]	-0.07 (0.23) [0.76]	-0.03 (0.13) [0.81]	0.79 (0.41)	115
Travel to Addis (30d)	-0.27*** (0.09) [0.00]***	0.10 (0.21) [0.65]	-0.37 (0.22) [0.10]	0.26* (0.15) [0.08]*	0.37 (0.49)	123
Shared travel expenses (30d)	-0.25*** (0.09) [0.01]***	0.10 (0.22) [0.64]	-0.35 (0.22) [0.12]	0.21 (0.15) [0.16]	0.34 (0.48)	123
Shared information (6m)	-0.18* (0.10) [0.08]*	-0.27 (0.23) [0.24]	0.09 (0.26) [0.73]	-0.17 (0.16) [0.30]	0.55 (0.50)	123
Lent/borrowed (ever)	-0.06 (0.10) [0.56]	-0.18 (0.18) [0.33]	0.12 (0.20) [0.55]	-0.04 (0.14) [0.79]	0.34 (0.48)	123
Hours spent with seed (30d)	-9.69** (4.55) [0.04]**	6.85 (13.65) [0.62]	-16.54 (13.94) [0.24]	-2.09 (9.61) [0.83]	18.18 (24.10)	115
Job network	-0.46* (0.27) [0.09]*	-0.20 (0.68) [0.77]	-0.27 (0.70) [0.71]	-0.63 (0.44) [0.16]	1.87 (1.44)	123

Notes: ANCOVA estimates of job-search partner variable differences by seed treatment status. Outcome variables are listed on the left. The index is a standardised index of all outcome variables below. Regressions control for the baseline outcome as well as variables that are imbalanced at baseline. Standard errors are in parentheses and are clustered by seed individual. Stars on the coefficient estimates and brackets reflect unadjusted p -values (in brackets). p -values are in brackets. * denotes significance at 10 pct., ** at 5 pct., and *** at 1 pct. level. If the number of observations is smaller than 540, it is because of missing observations for the number of hours spent with the seed.

Table H14: Impacts on job search by whether the baseline exchange of information is reciprocal

	(1)	(2)	(3)	(4)	(5)	(6)
	Treat. effect for two-way info flow at baseline	Treat. effect for non-two-way info flow at baseline	Treatment difference: (1)-(2)	Two-way info flow at baseline (control)	Mean of control search partners (SD)	Obs.
Search index	-0.50** (0.23)	-0.21 (0.44)	-0.29 (0.50)	0.10 (0.34)	-0.15 (1.33)	123
Searched job (7d)	[0.03]** -0.23** (0.10)	[0.64] -0.29 (0.19)	[0.56] 0.05 (0.22)	[0.77] 0.12 (0.14)	0.49 (0.50)	123
Searched boards (7d)	[0.03]** -0.21** (0.08)	[0.13] -0.04 (0.20)	[0.80] -0.16 (0.21)	[0.38] 0.01 (0.12)	0.34 (0.48)	123
Searched in networks (7d)	[0.01]** -0.14 (0.10)	[0.84] -0.14 (0.22)	[0.44] -0.00 (0.25)	[0.96] 0.07 (0.14)	0.45 (0.50)	123
Searched boards (1m)	[0.17] -0.27*** (0.10)	[0.54] 0.13 (0.19)	[1.00] -0.40* (0.23)	[0.62] -0.02 (0.14)	0.72 (0.45)	123
Searched in network (1m)	[0.01]** -0.12 (0.09)	[0.49] 0.28 (0.18)	[0.08]* -0.40** (0.19)	[0.90] 0.21* (0.12)	0.72 (0.45)	123
Searched at work sites (1m)	[0.18] -0.07 (0.09)	[0.12] -0.14 (0.17)	[0.04]** 0.07 (0.20)	[0.09]* 0.01 (0.14)	0.27 (0.45)	123
Searched at agency (1m)	[0.47] -0.05 (0.06)	[0.41] -0.05 (0.20)	[0.71] -0.00 (0.21)	[0.96] -0.12 (0.12)	0.15 (0.36)	123
Searched at central locations (1m)	[0.41] -0.05* (0.03)	[0.80] -0.05 (0.07)	[1.00] 0.00 (0.08)	[0.28] -0.01 (0.08)	0.06 (0.23)	123
Searched internet (1m)	[0.09]* 0.06 (0.08)	[0.42] -0.22 (0.18)	[0.99] 0.28 (0.19)	[0.91] -0.10 (0.11)	0.15 (0.36)	123
	[0.40]	[0.23]	[0.15]	[0.38]		

Notes: ANCOVA estimates of job-search partner variable differences by seed treatment status. Outcome variables are listed on the left. The index is a standardised index of all outcome variables below. Regressions control for the baseline outcome as well as variables that are imbalanced at baseline. Standard errors are in parentheses and are clustered by seed individual. Stars on the coefficient estimates and brackets reflect unadjusted p -values (in brackets). p -values are in brackets. * denotes significance at 10 pct., ** at 5 pct., and *** at 1 pct. level.

H.2 Results by baseline economic status

Table H15: Impacts on social interaction for partners with similar expenditure levels as the seed and partners with different expenditure levels

	(1) Treat. effect for Similar expenses at baseline	(2) Treat. effect for non-Similar expenses at baseline	(3) Treatment difference: (1)-(2)	(4) Similar expenses at baseline (control)	(5) Mean of control search partners (SD)	(6) Obs.
Social interaction index	-0.55** (0.24)	-0.38 (0.26)	-0.16 (0.31)	0.34 (0.24)	0.32 (1.07)	123
Spent time with seed (30d)	[0.02]** -0.09 (0.12)	[0.15] -0.18 (0.14)	[0.60] 0.09 (0.17)	[0.16] 0.06 (0.10)	0.79 (0.41)	115
Travel to Addis (30d)	[0.46] -0.21* (0.12)	[0.20] -0.15 (0.12)	[0.59] -0.06 (0.16)	[0.54] 0.12 (0.11)	0.37 (0.49)	123
Shared travel expenses (30d)	[0.09]* -0.23* (0.11)	[0.22] -0.11 (0.11)	[0.69] -0.12 (0.14)	[0.28] 0.14 (0.10)	0.34 (0.48)	123
Shared information (6m)	[0.05]* -0.12 (0.12)	[0.32] -0.25* (0.14)	[0.41] 0.14 (0.17)	[0.18] 0.07 (0.12)	0.55 (0.50)	123
Lent/borrowed (ever)	[0.32] -0.20* (0.11)	[0.07]* 0.07 (0.12)	[0.41] -0.27* (0.16)	[0.56] 0.18* (0.10)	0.34 (0.48)	123
Hours spent with seed (30d)	[0.08]* -10.95* (5.90)	[0.56] -2.48 (6.27)	[0.09]* -8.47 (7.79)	[0.08]* 7.20 (5.94)	18.18 (24.10)	115
Job network	[0.07]* -0.24 (0.38)	[0.69] -0.72* (0.42)	[0.28] 0.49 (0.56)	[0.23] -0.17 (0.35)	1.87 (1.44)	123
	[0.54]	[0.09]*	[0.39]	[0.62]		

Notes: ANCOVA estimates of job-search partner variable differences by seed treatment status. Outcome variables are listed on the left. The index is a standardised index of all outcome variables below. Regressions control for the baseline outcome as well as variables that are imbalanced at baseline. Standard errors are in parentheses and are clustered by seed individual. Stars on the coefficient estimates and brackets reflect unadjusted p -values (in brackets). p -values are in brackets. * denotes significance at 10 pct., ** at 5 pct., and *** at 1 pct. level. If the number of observations is smaller than 540, it is because of missing observations for the number of hours spent with the seed.

Table H16: Impacts on job search for partners with similar expenditure levels as the seed and partners with different expenditure levels

	(1)	(2)	(3)	(4)	(5)	(6)
	Treat. effect for Similar expenses at baseline	Treat. effect for non-Similar expenses at baseline	Treatment difference: (1)-(2)	Similar expenses at baseline (control)	Mean of control search partners (SD)	Obs.
Search index	-0.64** (0.28)	-0.18 (0.30)	-0.46 (0.42)	0.43 (0.30)	-0.15 (1.33)	123
Searched job (7d)	[0.03]** -0.37*** (0.11)	[0.56] -0.08 (0.13)	[0.28] -0.28 (0.17)	[0.15] 0.14 (0.12)	0.49 (0.50)	123
Searched boards (7d)	[0.00]*** -0.28*** (0.10)	[0.53] -0.05 (0.10)	[0.10] -0.23 (0.14)	[0.24] 0.19** (0.09)	0.34 (0.48)	123
Searched in networks (7d)	[0.01]*** -0.19 (0.13)	[0.62] -0.04 (0.12)	[0.10] -0.14 (0.17)	[0.05]** 0.13 (0.11)	0.45 (0.50)	123
Searched boards (1m)	[0.14] -0.21* (0.12)	[0.72] -0.20 (0.14)	[0.42] -0.01 (0.18)	[0.25] 0.08 (0.11)	0.72 (0.45)	123
Searched in network (1m)	[0.08]* -0.20* (0.12)	[0.15] 0.11 (0.12)	[0.95] -0.31* (0.17)	[0.45] 0.15 (0.11)	0.72 (0.45)	123
Searched at work sites (1m)	[0.10]* -0.06 (0.12)	[0.36] -0.07 (0.13)	[0.08]* 0.01 (0.19)	[0.20] 0.07 (0.11)	0.27 (0.45)	123
Searched at agency (1m)	[0.64] -0.18** (0.08)	[0.60] 0.06 (0.09)	[0.96] -0.24** (0.12)	[0.56] 0.12 (0.08)	0.15 (0.36)	123
Searched at central locations (1m)	[0.02]** -0.05 (0.03)	[0.47] -0.07 (0.05)	[0.04]** 0.02 (0.06)	[0.12] -0.03 (0.06)	0.06 (0.23)	123
Searched internet (1m)	[0.14] 0.12 (0.11)	[0.19] -0.06 (0.08)	[0.76] 0.18 (0.14)	[0.67] 0.00 (0.07)	0.15 (0.36)	123
	[0.28]	[0.48]	[0.19]	[0.96]		

Notes: ANCOVA estimates of job-search partner variable differences by seed treatment status. Outcome variables are listed on the left. The index is a standardised index of all outcome variables below. Regressions control for the baseline outcome as well as variables that are imbalanced at baseline. Standard errors are in parentheses and are clustered by seed individual. Stars on the coefficient estimates and brackets reflect unadjusted p -values (in brackets). p -values are in brackets. * denotes significance at 10 pct., ** at 5 pct., and *** at 1 pct. level.

H.3 Labor market expectations

Table H17: Impacts on labor market expectations

	(1)	(2)	(3)	(4)
	Treatment effect	Mean of control search partners (SD)	Max pairwise difference	Obs.
Offers expected (next 4m)	-0.05 (0.23) [0.82]	1.65 (2.12)	0.02	450
Reservation wage (in ETB)	-203.88 (223.44) [0.36]	2628.36 (2758.72)	0.04	499
Aspired wage (in 5y, in ETB)	-1494.03 (1639.37) [0.36]	9721.51 (19971.20)	0.03	514

Notes: ANCOVA estimates of job-search partner variable differences by seed treatment status. Outcome variables are listed on the left. The index is a standardised index of all outcome variables below. Regressions control for the baseline outcome as well as variables that are imbalanced at baseline. Standard errors are in parentheses and are clustered by seed individual. Stars on the coefficient estimates and brackets reflect unadjusted p -values (in brackets). p -values are in brackets. * denotes significance at 10 pct., ** at 5 pct., and *** at 1 pct. level. In column 3, we calculate the pairwise difference between the two group means and divide this by the standard deviation of the variable, following Imbens (2015).

Table H18: Impacts on labor market expectations for active and inactive job-search partners

	(1)	(2)	(3)	(4)	(5)	(6)
	Treat. effect for Searchers at baseline	Treat. effect for non-Searchers at baseline	Treatment difference: (1)-(2)	Searchers at baseline (control)	Mean of control search partners (SD)	Obs.
Offers expected (next 4m)	0.09 (0.39) [0.81]	-0.10 (0.26) [0.71]	0.19 (0.43) [0.66]	-0.22 (0.33) [0.50]	1.65 (2.12)	450
Reservation wage (in ETB)	-404.21 (283.83) [0.16]	-150.26 (255.99) [0.56]	-253.95 (309.72) [0.41]	31.21 (250.63) [0.90]	2628.36 (2758.72)	499
Aspired wage (in 5y, in ETB)	-4276.98 (4461.20) [0.34]	-441.57 (1223.03) [0.72]	-3835.41 (4432.52) [0.39]	3611.97 (4159.10) [0.39]	9721.51 (19971.20)	514

Notes: ANCOVA estimates of job-search partner variable differences by seed treatment status. Outcome variables are listed on the left. The index is a standardised index of all outcome variables below. Regressions control for the baseline outcome as well as variables that are imbalanced at baseline. Standard errors are in parentheses and are clustered by seed individual. Stars on the coefficient estimates and brackets reflect unadjusted *p*-values (in brackets). *p*-values are in brackets. * denotes significance at 10 pct., ** at 5 pct., and *** at 1 pct. level.

Table H19: Impacts on job search for job-search partners living in and outside the city centre at baseline

	(1) Treat. effect for In centre at baseline	(2) Treat. effect for non-In centre at baseline	(3) Treatment difference: (1)-(2)	(4) In centre at baseline (control)	(5) Mean of control search partners (SD)	(6) Obs.
Search index	-0.32 (0.38) [0.40]	-0.20* (0.10) [0.06]*	-0.12 (0.39) [0.76]	-0.03 (0.25) [0.91]	-0.64 (1.09)	540
Searched job (7d)	-0.10 (0.20) [0.62]	-0.07 (0.04) [0.13]	-0.03 (0.20) [0.88]	0.00 (0.14) [0.97]	0.34 (0.48)	540
Searched boards (7d)	-0.01 (0.15) [0.93]	-0.07** (0.03) [0.03]**	0.06 (0.16) [0.71]	-0.02 (0.09) [0.80]	0.17 (0.38)	540
Searched in networks (7d)	0.08 (0.21) [0.69]	-0.03 (0.05) [0.48]	0.12 (0.22) [0.59]	-0.06 (0.14) [0.65]	0.34 (0.47)	540
Searched boards (1m)	-0.09 (0.24) [0.71]	-0.17** (0.07) [0.02]**	0.08 (0.24) [0.74]	-0.04 (0.11) [0.71]	0.52 (0.50)	540
Searched in network (1m)	-0.17 (0.21) [0.42]	-0.07 (0.04) [0.12]	-0.10 (0.22) [0.64]	-0.07 (0.13) [0.57]	0.72 (0.45)	540
Searched at work sites (1m)	0.03 (0.14) [0.84]	-0.01 (0.03) [0.75]	0.04 (0.15) [0.79]	-0.07 (0.07) [0.29]	0.15 (0.36)	540
Searched at agency (1m)	-0.28*** (0.09) [0.00]***	-0.02 (0.02) [0.46]	-0.27*** (0.09) [0.00]***	0.19** (0.09) [0.04]**	0.10 (0.30)	540
Searched at central locations (1m)	-0.01 (0.01) [0.29]	-0.02** (0.01) [0.04]**	0.01 (0.01) [0.15]	-0.02** (0.01) [0.03]**	0.02 (0.14)	540
Searched internet (1m)	-0.10 (0.09) [0.26]	0.03 (0.03) [0.25]	-0.14 (0.10) [0.16]	0.02 (0.09) [0.81]	0.08 (0.27)	540

Notes: ANCOVA estimates of job-search partner variable differences by seed treatment status. Outcome variables are listed on the left. The index is a standardised index of all outcome variables below. Regressions control for the baseline outcome as well as variables that are imbalanced at baseline. Standard errors are in parentheses and are clustered by seed individual. Stars on the coefficient estimates and brackets reflect unadjusted p -values (in brackets). p -values are in brackets. * denotes significance at 10 pct., ** at 5 pct., and *** at 1 pct. level.

Table H20: Impacts on social interaction for job-search partners living in and outside the city centre at baseline

	(1)	(2)	(3)	(4)	(5)	(6)
	Treat. effect for In centre at baseline	Treat. effect for non-In centre at baseline	Treatment difference: (1)-(2)	In centre at baseline (control)	Mean of control search partners (SD)	Obs.
Social interaction index	0.01 (0.47) [0.98]	-0.06 (0.11) [0.60]	0.07 (0.47) [0.88]	-0.14 (0.30) [0.64]	0.00 (1.00)	540
Spent time with seed (30d)	0.00 (0.23) [0.99]	0.02 (0.05) [0.69]	-0.02 (0.23) [0.93]	-0.11 (0.14) [0.43]	0.72 (0.45)	490
Travel to Addis (30d)	0.03 (0.19) [0.86]	-0.04 (0.05) [0.34]	0.08 (0.19) [0.69]	-0.04 (0.14) [0.76]	0.25 (0.43)	540
Shared travel expenses (30d)	-0.09 (0.18) [0.60]	-0.07 (0.05) [0.12]	-0.02 (0.18) [0.90]	-0.03 (0.14) [0.84]	0.24 (0.42)	540
Shared information (6m)	0.08 (0.26) [0.76]	-0.04 (0.06) [0.53]	0.12 (0.27) [0.65]	0.00 (0.17) [0.98]	0.41 (0.49)	540
Lent/borrowed (ever)	0.11 (0.19) [0.58]	0.03 (0.04) [0.42]	0.07 (0.20) [0.72]	0.01 (0.12) [0.94]	0.25 (0.44)	540
Hours spent with seed (30d)	0.24 (2.46) [0.92]	-1.11 (2.40) [0.64]	1.35 (3.33) [0.69]	-11.05*** (2.02) [0.00]***	14.37 (21.35)	490
Job network	-0.52 (0.82) [0.52]	0.02 (0.20) [0.91]	-0.55 (0.83) [0.51]	0.56 (0.59) [0.34]	1.49 (1.54)	540

Notes: ANCOVA estimates of job-search partner variable differences by seed treatment status. Outcome variables are listed on the left. The index is a standardised index of all outcome variables below. Regressions control for the baseline outcome as well as variables that are imbalanced at baseline. Standard errors are in parentheses and are clustered by seed individual. Stars on the coefficient estimates and brackets reflect unadjusted p -values (in brackets). p -values are in brackets. * denotes significance at 10 pct., ** at 5 pct., and *** at 1 pct. level. If the number of observations is smaller than 540, it is because of missing observations for the number of hours spent with the seed.

Table H21: Impacts on job search by job-search partner distance to the city center at baseline

	(1)	(2)	(3)	(4)	(5)	(6)
	Treat. effect for Above median center distance at baseline	Treat. effect for non-Above median center distance at baseline	Treatment difference: (1)-(2)	Above median center distance at baseline (control)	Mean of control search partners (SD)	Obs.
Search index	-0.18 (0.13) [0.16]	-0.21 (0.14) [0.11]	0.03 (0.18) [0.87]	-0.04 (0.14) [0.78]	-0.64 (1.09)	540
Searched job (7d)	-0.03 (0.06) [0.61]	-0.11* (0.06) [0.07]*	0.08 (0.08) [0.33]	-0.06 (0.06) [0.26]	0.34 (0.48)	540
Searched boards (7d)	-0.07 (0.04) [0.11]	-0.07 (0.04) [0.12]	0.00 (0.06) [0.95]	-0.05 (0.05) [0.28]	0.17 (0.38)	540
Searched in networks (7d)	0.00 (0.06) [0.95]	-0.06 (0.06) [0.33]	0.06 (0.08) [0.43]	-0.04 (0.06) [0.43]	0.34 (0.47)	540
Searched boards (1m)	-0.16* (0.09) [0.07]*	-0.17** (0.08) [0.97]**	0.00 (0.09) [0.97]	-0.01 (0.07) [0.94]	0.52 (0.50)	540
Searched in network (1m)	-0.07 (0.06) [0.27]	-0.07 (0.06) [0.21]	0.01 (0.09) [0.95]	0.04 (0.06) [0.54]	0.72 (0.45)	540
Searched at work sites (1m)	-0.03 (0.04) [0.53]	0.01 (0.04) [0.80]	-0.04 (0.06) [0.51]	-0.00 (0.04) [0.97]	0.15 (0.36)	540
Searched at agency (1m)	-0.05* (0.03) [0.06]*	-0.00 (0.03) [0.95]	-0.05 (0.04) [0.23]	0.02 (0.03) [0.53]	0.10 (0.30)	540
Searched at central locations (1m)	-0.02 (0.02) [0.23]	-0.02* (0.01) [0.06]*	0.00 (0.02) [0.93]	0.00 (0.02) [0.80]	0.02 (0.14)	540
Searched internet (1m)	0.03 (0.04) [0.51]	0.03 (0.04) [0.46]	-0.00 (0.05) [0.99]	0.03 (0.03) [0.37]	0.08 (0.27)	540

Notes: ANCOVA estimates of job-search partner variable differences by seed treatment status. Outcome variables are listed on the left. The index is a standardised index of all outcome variables below. Regressions control for the baseline outcome as well as variables that are imbalanced at baseline. Standard errors are in parentheses and are clustered by seed individual. Stars on the coefficient estimates and brackets reflect unadjusted *p*-values (in brackets). *p*-values are in brackets. * denotes significance at 10 pct., ** at 5 pct., and *** at 1 pct. level.

Table H22: Impacts on social interactions by job-search partner distance to the city center at baseline

	(1)	(2)	(3)	(4)	(5)	(6)
	Treat. effect for Above median center distance at baseline	Treat. effect for non-Above median center distance at baseline	Treatment difference: (1)-(2)	Above median center distance at baseline (control)	Mean of control search partners (SD)	Obs.
Social interaction index	-0.07 (0.16) [0.65]	-0.03 (0.14) [0.82]	-0.04 (0.20) [0.84]	-0.06 (0.17) [0.71]	0.00 (1.00)	540
Spent time with seed (30d)	0.09 (0.06) [0.18]	-0.04 (0.07) [0.61]	0.13 (0.09) [0.17]	-0.07 (0.07) [0.29]	0.72 (0.45)	490
Travel to Addis (30d)	-0.09 (0.07) [0.17]	0.01 (0.05) [0.80]	-0.11 (0.09) [0.20]	0.04 (0.07) [0.58]	0.25 (0.43)	540
Shared travel expenses (30d)	-0.13* (0.07) [0.06]*	-0.02 (0.05) [0.76]	-0.11 (0.08) [0.18]	0.04 (0.07) [0.57]	0.24 (0.42)	540
Shared information (6m)	-0.08 (0.08) [0.29]	0.02 (0.08) [0.85]	-0.10 (0.11) [0.37]	-0.09 (0.08) [0.30]	0.41 (0.49)	540
Lent/borrowed (ever)	0.11* (0.07) [0.09]*	-0.04 (0.05) [0.47]	0.15* (0.09) [0.09]*	0.01 (0.07) [0.85]	0.25 (0.44)	540
Hours spent with seed (30d)	0.70 (3.19) [0.83]	-2.31 (3.14) [0.46]	3.01 (4.37) [0.49]	-1.48 (3.06) [0.63]	14.37 (21.35)	490
Job network	-0.21 (0.24) [0.39]	0.21 (0.27) [0.43]	-0.42 (0.34) [0.22]	-0.29 (0.27) [0.28]	1.49 (1.54)	540

Notes: ANCOVA estimates of job-search partner variable differences by seed treatment status. Outcome variables are listed on the left. The index is a standardised index of all outcome variables below. Regressions control for the baseline outcome as well as variables that are imbalanced at baseline. Standard errors are in parentheses and are clustered by seed individual. Stars on the coefficient estimates and brackets reflect unadjusted p -values (in brackets). p -values are in brackets. * denotes significance at 10 pct., ** at 5 pct., and *** at 1 pct. level. If the number of observations is smaller than 540, it is because of missing observations for the number of hours spent with the seed.

Table H23: Impacts on job search by job-search partner distance to the city center at baseline, active baseline searchers

	(1)	(2)	(3)	(4)	(5)	(6)
	Impact with Above median center distance at baseline	Impact with non-Above median center distance at baseline	Difference in impact: (1)-(2)	Above median center distance at baseline (control)	Mean of control search partners (SD)	Obs.
Search index	-0.43 (0.29)	-0.40 (0.30)	-0.03 (0.40)	-0.23 (0.29)	-0.15 (1.33)	123
Searched job (7d)	[0.14]	[0.19]	[0.93]	[0.43]		
	-0.20* (0.11)	-0.21 (0.14)	0.01 (0.16)	-0.13 (0.11)	0.49 (0.50)	123
	[0.07]*	[0.13]	[0.97]	[0.22]		
Searched boards (7d)	-0.20** (0.09)	-0.09 (0.12)	-0.10 (0.15)	-0.17 (0.11)	0.34 (0.48)	123
	[0.03]**	[0.45]	[0.48]	[0.12]		
	0.01	-0.25**	0.26	-0.13	0.45	123
Searched in networks (7d)	(0.12)	(0.12)	(0.17)	(0.12)	(0.50)	
	[0.95]	[0.04]**	[0.13]	[0.28]		
Searched boards (1m)	-0.17 (0.13)	-0.21* (0.12)	0.04 (0.17)	-0.16 (0.11)	0.72 (0.45)	123
	[0.21]	[0.08]*	[0.79]	[0.14]		
Searched in network (1m)	-0.09 (0.12)	-0.02 (0.11)	-0.07 (0.17)	0.04 (0.10)	0.72 (0.45)	123
	[0.48]	[0.89]	[0.68]	[0.68]		
Searched at work sites (1m)	-0.05 (0.10)	-0.05 (0.13)	0.00 (0.16)	-0.12 (0.10)	0.27 (0.45)	123
	[0.60]	[0.67]	[0.99]	[0.25]		
Searched at agency (1m)	-0.09 (0.09)	-0.05 (0.09)	-0.04 (0.12)	0.04 (0.08)	0.15 (0.36)	123
	[0.33]	[0.57]	[0.76]	[0.65]		
Searched at central locations (1m)	-0.09 (0.05)	-0.03 (0.03)	-0.05 (0.06)	0.05 (0.06)	0.06 (0.23)	123
	[0.12]	[0.24]	[0.41]	[0.47]		
Searched internet (1m)	-0.01 (0.10)	0.01 (0.11)	-0.02 (0.15)	0.10 (0.08)	0.15 (0.36)	123
	[0.88]	[0.96]	[0.89]	[0.25]		

Notes: ANCOVA estimates of job-search partner variable differences by seed treatment status. Outcome variables are listed on the left. Regressions control for the baseline outcome as well as variables that are imbalanced at baseline. Standard errors are in parentheses and are clustered by seed individual. Stars on the coefficient estimates and brackets reflect unadjusted p -values. p -values are in brackets. * denotes significance at 10 pct., ** at 5 pct., and *** at 1 pct. level.

Table H24: Impacts on social interactions by job-search partner distance to the city center at baseline, active baseline searchers

	(1)	(2)	(3)	(4)	(5)	(6)
	Impact with Above median center distance at baseline	Impact with non-Above median center distance at baseline	Difference in impact: (1)-(2)	Above median center distance at baseline (control)	Mean of control search partners (SD)	Obs.
Social interaction index	-0.68** (0.31)	-0.32 (0.24)	-0.36 (0.37)	0.02 (0.32)	0.32 (1.07)	123
Spent time with seed (30d)	[0.03]** -0.20 (0.14)	[0.18] -0.09 (0.12)	[0.33] -0.11 (0.18)	[0.95] -0.06 (0.11)	0.79 (0.41)	115
Travel to Addis (30d)	[0.17] -0.30** (0.13)	[0.48] -0.09 (0.12)	[0.53] -0.21 (0.16)	[0.59] 0.06 (0.13)	0.37 (0.49)	123
Shared travel expenses (30d)	[0.02]** -0.34*** (0.12)	[0.44] -0.04 (0.11)	[0.20] -0.30* (0.16)	[0.67] 0.10 (0.13)	0.34 (0.48)	123
Shared information (6m)	[0.01]** -0.22 (0.14)	[0.73] -0.15 (0.13)	[0.06]* -0.07 (0.19)	[0.44] -0.09 (0.14)	0.55 (0.50)	123
Lent/borrowed (ever)	[0.12] -0.14 (0.14)	[0.27] -0.08 (0.11)	[0.69] -0.07 (0.18)	[0.54] 0.19 (0.14)	0.34 (0.48)	123
Hours spent with seed (30d)	[0.30] -7.92 (5.77)	[0.51] -5.70 (6.69)	[0.71] -2.22 (8.33)	[0.17] -3.47 (6.65)	18.18 (24.10)	115
Job network	[0.17] -0.19 (0.39)	[0.40] -0.63* (0.36)	[0.79] 0.44 (0.52)	[0.60] -0.54 (0.38)	1.87 (1.44)	123
	[0.63]	[0.08]*	[0.40]	[0.16]		

Notes: ANCOVA estimates of job-search partner variable differences by seed treatment status. Outcome variables are listed on the left. Regressions control for the baseline outcome as well as variables that are imbalanced at baseline. Standard errors are in parentheses and are clustered by seed individual. Stars on the coefficient estimates and brackets reflect unadjusted *p*-values (in brackets). *p*-values are in brackets. * denotes significance at 10 pct, ** at 5 pct, and *** at 1 pct. level.

Table H25: Impacts on job search, by whether the seed works at endline

	(1)	(2)	(3)	(4)	(5)	(6)
	Treat. effect for Seed working at endline	Treat. effect for non-Seed working at endline	Treatment difference: (1)-(2)	Seed working at endline (control)	Mean of control search partners (SD)	Obs.
Search index	-0.17 (0.13) [0.20]	-0.21 (0.15) [0.16]	0.04 (0.19) [0.84]	0.10 (0.15) [0.49]	-0.64 (1.09)	540
Searched job (7d)	-0.03 (0.05) [0.59]	-0.11 (0.07) [0.10]	0.09 (0.09) [0.33]	-0.00 (0.07) [0.98]	0.34 (0.48)	540
Searched boards (7d)	-0.08* (0.04) [0.05]*	-0.04 (0.04) [0.38]	-0.04 (0.06) [0.47]	0.06 (0.05) [0.16]	0.17 (0.38)	540
Searched in networks (7d)	-0.02 (0.06) [0.72]	-0.03 (0.07) [0.71]	0.00 (0.09) [0.96]	0.04 (0.07) [0.57]	0.34 (0.47)	540
Searched boards (1m)	-0.15* (0.09) [0.09]*	-0.19* (0.11) [0.09]*	0.04 (0.14) [0.80]	-0.02 (0.11) [0.82]	0.52 (0.50)	540
Searched in network (1m)	-0.04 (0.06) [0.48]	-0.09 (0.06) [0.12]	0.05 (0.09) [0.55]	0.04 (0.06) [0.51]	0.72 (0.45)	540
Searched at work sites (1m)	0.00 (0.04) [0.92]	-0.02 (0.05) [0.75]	0.02 (0.06) [0.75]	0.02 (0.04) [0.61]	0.15 (0.36)	540
Searched at agency (1m)	-0.03 (0.03) [0.19]	-0.02 (0.04) [0.51]	-0.01 (0.04) [0.81]	-0.02 (0.03) [0.64]	0.10 (0.30)	540
Searched at central locations (1m)	-0.03* (0.01) [0.06]*	-0.00 (0.00) [0.31]	-0.02* (0.01) [0.09]*	0.03*** (0.01) [0.01]***	0.02 (0.14)	540
Searched internet (1m)	0.03 (0.04) [0.43]	0.02 (0.04) [0.56]	0.00 (0.05) [0.93]	-0.01 (0.03) [0.75]	0.08 (0.27)	540

Notes: ANCOVA estimates of job-search partner variable differences by seed treatment status. Outcome variables are listed on the left. The index is a standardised index of all outcome variables below. Regressions control for the baseline outcome as well as variables that are imbalanced at baseline. Standard errors are in parentheses and are clustered by seed individual. Stars on the coefficient estimates and brackets reflect unadjusted *p*-values (in brackets). *p*-values are in brackets. * denotes significance at 10 pct., ** at 5 pct., and *** at 1 pct. level.

Table H26: Impacts on social interaction, by whether the seed works at endline

	(1)	(2)	(3)	(4)	(5)	(6)
	Treat. effect for Seed working at endline	Treat. effect for non-Seed working at endline	Treatment difference: (1)-(2)	Seed working at endline (control)	Mean of control search partners (SD)	Obs.
Social interaction index	-0.05 (0.14) [0.75]	-0.08 (0.17) [0.66]	0.03 (0.23) [0.89]	-0.06 (0.18) [0.75]	0.00 (1.00)	540
Spent time with seed (30d)	0.05 (0.07) [0.44]	-0.03 (0.08) [0.71]	0.08 (0.11) [0.43]	-0.06 (0.07) [0.38]	0.72 (0.45)	490
Travel to Addis (30d)	-0.02 (0.05) [0.70]	-0.07 (0.07) [0.33]	0.05 (0.09) [0.58]	-0.05 (0.07) [0.52]	0.25 (0.43)	540
Shared travel expenses (30d)	-0.06 (0.06) [0.32]	-0.10 (0.07) [0.15]	0.05 (0.09) [0.60]	-0.05 (0.07) [0.44]	0.24 (0.42)	540
Shared information (6m)	-0.05 (0.08) [0.50]	0.00 (0.10) [0.97]	-0.06 (0.13) [0.66]	0.07 (0.10) [0.49]	0.41 (0.49)	540
Lent/borrowed (ever)	-0.03 (0.05) [0.48]	0.11 (0.07) [0.13]	-0.14 (0.09) [0.10]	-0.03 (0.07) [0.69]	0.25 (0.44)	540
Hours spent with seed (30d)	1.14 (3.11) [0.71]	-3.78 (3.65) [0.30]	4.92 (4.79) [0.31]	-3.08 (3.56) [0.39]	14.37 (21.35)	490
Job network	0.02 (0.25) [0.95]	0.05 (0.33) [0.89]	-0.03 (0.42) [0.94]	0.30 (0.32) [0.35]	1.49 (1.54)	540

Notes: ANCOVA estimates of job-search partner variable differences by seed treatment status. Outcome variables are listed on the left. The index is a standardised index of all outcome variables below. Regressions control for the baseline outcome as well as variables that are imbalanced at baseline. Standard errors are in parentheses and are clustered by seed individual. Stars on the coefficient estimates and brackets reflect unadjusted p -values (in brackets). p -values are in brackets. * denotes significance at 10 pct., ** at 5 pct., and *** at 1 pct. level. If the number of observations is smaller than 540, it is because of missing observations for the number of hours spent with the seed.

Table H27: Impacts on job search, by seed's baseline distance to centre

	(1)	(2)	(3)	(4)	(5)	(6)
	Treat. effect for Short distance to center at baseline	Treat. effect for non-Short distance to center at baseline	Treatment difference: (1)-(2)	Short distance to center at baseline (control)	Mean of control search partners (SD)	Obs.
Search index	-0.42*** (0.15)	0.07 (0.15)	-0.49** (0.21)	0.22 (0.16)	-0.64 (1.09)	540
Searched job (7d)	[0.00]*** -0.15** (0.06)	[0.66] 0.03 (0.06)	[0.02]** -0.19** (0.09)	[0.18] 0.08 (0.06)	0.34 (0.48)	540
Searched boards (7d)	[0.01]** -0.13** (0.05)	[0.63] -0.04 (0.04)	[0.03]** -0.09 (0.07)	[0.22] 0.08 (0.06)	0.17 (0.38)	540
Searched in networks (7d)	[0.02]** -0.12* (0.06)	[0.37] 0.10 (0.08)	[0.20] -0.21** (0.10)	[0.13] 0.07 (0.07)	0.34 (0.47)	540
Searched boards (1m)	[0.07]* -0.19** (0.09)	[0.19] -0.13 (0.11)	[0.03]** -0.05 (0.14)	[0.34] 0.02 (0.11)	0.52 (0.50)	540
Searched in network (1m)	[0.05]** -0.16*** (0.06)	[0.21] 0.08 (0.07)	[0.70] -0.24*** (0.09)	[0.85] 0.05 (0.06)	0.72 (0.45)	540
Searched at work sites (1m)	[0.01]*** -0.03 (0.05)	[0.24] 0.05 (0.05)	[0.01]*** -0.09 (0.07)	[0.41] 0.00 (0.05)	0.15 (0.36)	540
Searched at agency (1m)	[0.47] -0.04 (0.04)	[0.31] -0.06** (0.02)	[0.22] 0.02 (0.05)	[0.95] 0.04 (0.04)	0.10 (0.30)	540
Searched at central locations (1m)	[0.34] -0.03* (0.02)	[0.02]** -0.01 (0.02)	[0.67] -0.02 (0.02)	[0.28] 0.01 (0.02)	0.02 (0.14)	540
Searched internet (1m)	[0.07]* -0.00 (0.04)	[0.68] 0.05 (0.04)	[0.30] -0.05 (0.06)	[0.57] 0.05 (0.04)	0.08 (0.27)	540
	[0.94]	[0.25]	[0.40]	[0.23]		

Notes: ANCOVA estimates of job-search partner variable differences by seed treatment status. Outcome variables are listed on the left. The index is a standardised index of all outcome variables below. Regressions control for the baseline outcome as well as variables that are imbalanced at baseline. Standard errors are in parentheses and are clustered by seed individual. Stars on the coefficient estimates and brackets reflect unadjusted p -values (in brackets). p -values are in brackets. * denotes significance at 10 pct., ** at 5 pct., and *** at 1 pct. level.

Table H28: Impacts on social interaction, by seed's baseline distance to centre

	(1)	(2)	(3)	(4)	(5)	(6)
	Treat. effect for Short distance to center at baseline	Treat. effect for non-Short distance to center at baseline	Treatment difference: (1)-(2)	Short distance to center at baseline (control)	Mean of control search partners (SD)	Obs.
Social interaction index	-0.10 (0.17) [0.56]	-0.06 (0.17) [0.73]	-0.04 (0.24) [0.88]	0.09 (0.18) [0.64]	0.00 (1.00)	540
Spent time with seed (30d)	0.02 (0.08) [0.84]	-0.00 (0.08) [1.00]	0.02 (0.11) [0.88]	0.03 (0.08) [0.70]	0.72 (0.45)	490
Travel to Addis (30d)	-0.04 (0.07) [0.52]	-0.05 (0.07) [0.44]	0.01 (0.10) [0.93]	0.02 (0.07) [0.81]	0.25 (0.43)	540
Shared travel expenses (30d)	-0.08 (0.07) [0.22]	-0.07 (0.07) [0.32]	-0.01 (0.10) [0.88]	0.02 (0.07) [0.79]	0.24 (0.42)	540
Shared information (6m)	-0.03 (0.09) [0.75]	-0.05 (0.09) [0.57]	0.03 (0.13) [0.84]	-0.00 (0.09) [0.98]	0.41 (0.49)	540
Lent/borrowed (ever)	0.07 (0.05) [0.19]	0.02 (0.07) [0.75]	0.05 (0.09) [0.60]	-0.06 (0.06) [0.36]	0.25 (0.44)	540
Hours spent with seed (30d)	-4.40 (3.74) [0.24]	0.70 (3.74) [0.85]	-5.10 (5.33) [0.34]	5.70 (3.68) [0.12]	14.37 (21.35)	490
Job network	-0.21 (0.27) [0.44]	0.09 (0.30) [0.76]	-0.30 (0.40) [0.46]	0.31 (0.27) [0.25]	1.49 (1.54)	540

Notes: ANCOVA estimates of job-search partner variable differences by seed treatment status. Outcome variables are listed on the left. The index is a standardised index of all outcome variables below. Regressions control for the baseline outcome as well as variables that are imbalanced at baseline. Standard errors are in parentheses and are clustered by seed individual. Stars on the coefficient estimates and brackets reflect unadjusted p -values (in brackets). p -values are in brackets. * denotes significance at 10 pct., ** at 5 pct., and *** at 1 pct. level. If the number of observations is smaller than 540, it is because of missing observations for the number of hours spent with the seed.

Table H29: Direct impacts on seeds moving within or out of Addis

	(1) Moved within Addis	(2) Moved out of Addis
Treatment effect	0.00674 (0.0455)	0.000963 (0.0179)
Constant	0.0854** (0.0316)	0.0122 (0.0124)
<i>N</i>	158	158

Notes: OLS regression of a binary variable, indicating whether a seed individual moved, on a treatment indicator. Outcomes missing for seven seed individuals. Standard errors are in parentheses. * denotes significance at 10 pct., ** at 5 pct., and *** at 1 pct. level.

Table H30: Impact on beliefs and attitudes

	(1) Treatment effect	(2) Mean of control search partners (SD)	(3) Max pairwise difference	(4) Obs.
Alone in charge of own life's course	0.58*** (0.13) [0.00]***	3.08 (1.44)	0.47	485
Life achievements are primarily luck	0.16 (0.13) [0.21]	2.85 (1.31)	0.07	485
Doubts own abilities during difficulties	-0.17 (0.12) [0.18]	2.72 (1.20)	0.17	485
Possibilities dependent on social circumstances	-0.08 (0.08) [0.29]	3.51 (0.99)	0.14	485
Has little control over own life	-0.37*** (0.13) [0.01]***	2.83 (1.16)	0.39	485

Notes: ANCOVA estimates of job-search partner variable differences by seed treatment status. Outcome variables are listed on the left. The index is a standardised index of all outcome variables below. Regressions control for the baseline outcome as well as variables that are imbalanced at baseline. Standard errors are in parentheses and are clustered by seed individual. Stars on the coefficient estimates and brackets reflect unadjusted *p*-values (in brackets). *p*-values are in brackets. * denotes significance at 10 pct., ** at 5 pct., and *** at 1 pct. level. In column 3, we calculate the pairwise difference between the two group means and divide this by the standard deviation of the variable, following Imbens (2015).

Table H31: Impact on beliefs and attitudes for active and inactive job-search partners

	(1)	(2)	(3)	(4)	(5)	(6)
	Treat. effect for Searchers at baseline	Treat. effect for non-Searchers at baseline	Treatment difference: (1)-(2)	Searchers at baseline (control)	Mean of control search partners (SD)	Obs.
Alone in charge of own life's course	1.10*** (0.22) [0.00]***	0.40*** (0.14) [0.01]***	0.70*** (0.25) [0.01]***	-0.47** (0.21) [0.03]**	3.08 (1.44)	485
Life achievements are primarily luck	0.48** (0.23) [0.04]**	0.05 (0.15) [0.71]	0.43 (0.27) [0.11]	-0.19 (0.20) [0.34]	2.85 (1.31)	485
Doubts own abilities during difficulties	-0.11 (0.23) [0.63]	-0.19 (0.14) [0.18]	0.08 (0.26) [0.77]	-0.09 (0.19) [0.65]	2.72 (1.20)	485
Possibilities dependent on social circumstances	-0.04 (0.14) [0.77]	-0.06 (0.10) [0.51]	0.02 (0.18) [0.90]	0.26* (0.14) [0.05]*	3.51 (0.99)	485
Has little control over own life	-0.55** (0.25) [0.03]**	-0.29** (0.13) [0.03]**	-0.26 (0.25) [0.31]	0.35** (0.18) [0.05]**	2.83 (1.16)	485

Notes: ANCOVA estimates of job-search partner variable differences by seed treatment status. Outcome variables are listed on the left. The index is a standardised index of all outcome variables below. Regressions control for the baseline outcome as well as variables that are imbalanced at baseline. Standard errors are in parentheses and are clustered by seed individual. Stars on the coefficient estimates and brackets reflect unadjusted p -values (in brackets). p -values are in brackets. * denotes significance at 10 pct., ** at 5 pct., and *** at 1 pct. level.

Table H32: Expected returns of travelling to the city centre for job search, by treatment

	(1)	(2)	(3)	(4)	(5)
	Days at boards (treated)	Days at boards (control)	Treated	Difference (1) and (2)	Mean of control search partners (SD) Obs.
Offers expected (next 4m)	0.57*** (0.20) [0.00]***	0.26* (0.14) [0.07]*	-0.06 (0.21) [0.78]	0.31 (0.24) [0.20]	1.65 (2.12) 450

Notes: ANCOVA estimates of expected offers on treatment, number of days searching at the job boards, and treatment x number of days searching at the job boards. Outcome variables are listed on the left. Regressions control for the baseline outcome as well as variables that are imbalanced at baseline. Standard errors are in parentheses and are clustered by seed individual. Stars on the coefficient estimates and brackets reflect unadjusted p -values (in brackets). p -values are in brackets. * denotes significance at 10 pct., ** at 5 pct., and *** at 1 pct. level.

Table H33: Expected returns of travelling to the city centre for job search, by treatment, for active and inactive job-search partners

	Searchers at baseline			Non-searchers at baseline					
	(1)	(2)	(3)	(4)	(5)	(6)	(7)	(8)	(9)
	Days at boards (treated)	Days at boards (control)	Treated	Difference (1) and (2)	Days at boards (treated)	Days at boards (control)	Treated	Difference (1) and (2)	Mean of control search partners (SD)
Offers expected (next 4m)	0.20 (0.42) [0.63]	0.12 (0.19) [0.52]	0.15 (0.47) [0.74]	0.08 (0.46) [0.85]	0.67*** (0.22) [0.00]***	0.56** (0.23) [0.02]**	-0.08 (0.23) [0.72]	0.10 (0.32) [0.75]	1.65 (2.12) 450

Notes: ANCOVA estimates of expected offers on treatment, number of days searching at the job boards, and treatment x number of days searching at the job boards, interacted with active baseline job-search. Outcome variables are listed on the left. Regressions control for the baseline outcome as well as variables that are imbalanced at baseline. Standard errors are in parentheses and are clustered by seed individual. Stars on the coefficient estimates and brackets reflect unadjusted *p*-values (in brackets). *p*-values are in brackets. * denotes significance at 10 pct., ** at 5 pct., and *** at 1 pct. level.

H.4 LASSO tables for main results

Table H34: Impacts on main outcome indices, LASSO

	(1) Overall Treatment effect	(2) Treat. effect for Searchers at baseline	(3) Treat. effect for non-Searchers at baseline	(4) Treatment difference: (1)-(2)	(5) Mean of control search partners (SD) Obs.
Social interaction index	-0.05 (0.11) [0.63]	-0.50** (0.20) [0.01]**	0.10 (0.11) [0.37]	-0.59*** (0.20) [0.00]***	0.00 (1.00) 540
Search index	-0.16* (0.10) [0.10]*	-0.43** (0.20) [0.03]**	-0.07 (0.10) [0.48]	-0.36* (0.21) [0.09]*	-0.64 (1.09) 540
Employment index	-0.05 (0.09) [0.57]	-0.36* (0.20) [0.07]*	0.04 (0.10) [0.69]	-0.40* (0.21) [0.06]*	0.43 (1.06) 540

Notes: ANCOVA estimates of job-search partner variable differences by seed treatment status. Outcome variables are listed on the left. Regressions control for the baseline outcome, variables that are imbalanced at baseline, as well as control variables selected by a Belloni double LASSO procedure. Standard errors are in parentheses and are clustered by seed individual. Stars on the coefficient estimates and brackets reflect unadjusted p -values (in brackets). p -values are in brackets. * denotes significance at 10 pct., ** at 5 pct., and *** at 1 pct. level.

H.5 Different definitions of ‘active job-seekers’

i) individuals who ever searched for jobs

Table H35: Impacts on social interaction for active and inactive job-search partners

	(1)	(2)	(3)	(4)	(5)	(6)
	Treat. effect for Searches at baseline	Treat. effect for non-Searches at baseline	Treatment difference: (1)-(2)	Searches at baseline (control)	Mean of control search partners (SD)	Obs.
Social interaction index	-0.36** (0.15) [0.02]**	0.10 (0.13) [0.41]	-0.47*** (0.18) [0.01]**	0.22 (0.14) [0.10]	0.00 (1.00)	540
Spent time with seed (30d)	-0.12 (0.08) [0.11]	0.08 (0.06) [0.16]	-0.21** (0.08) [0.01]**	0.04 (0.06) [0.44]	0.72 (0.45)	490
Travel to Addis (30d)	-0.16** (0.07) [0.01]**	0.02 (0.05) [0.63]	-0.19** (0.08) [0.02]**	0.10* (0.06) [0.08]*	0.25 (0.43)	540
Shared travel expenses (30d)	-0.17*** (0.07) [0.01]***	-0.02 (0.05) [0.71]	-0.15** (0.07) [0.04]**	0.08 (0.06) [0.16]	0.24 (0.42)	540
Shared information (6m)	-0.10 (0.08) [0.25]	-0.01 (0.08) [0.88]	-0.08 (0.11) [0.42]	0.01 (0.08) [0.94]	0.41 (0.49)	540
Lent/borrowed (ever)	0.02 (0.07) [0.84]	0.05 (0.05) [0.26]	-0.04 (0.09) [0.65]	0.05 (0.06) [0.38]	0.25 (0.44)	540
Hours spent with seed (30d)	-9.46** (3.78) [0.01]**	3.91 (2.43) [0.11]	-13.37*** (4.20) [0.00]**	7.66*** (2.93) [0.01]**	14.37 (21.35)	490
Job network	-0.16 (0.24) [0.49]	0.09 (0.25) [0.73]	-0.25 (0.32) [0.43]	0.17 (0.25) [0.49]	1.49 (1.54)	540

Notes: ANCOVA estimates of job-search partner variable differences by seed treatment status. Outcome variables are listed on the left. The index is a standardised index of all outcome variables below. Regressions control for the baseline outcome as well as variables that are imbalanced at baseline. Standard errors are in parentheses and are clustered by seed individual. Stars on the coefficient estimates and brackets reflect unadjusted p -values (in brackets). p -values are in brackets. * denotes significance at 10 pct., ** at 5 pct., and *** at 1 pct. level. If the number of observations is smaller than 540, it is because of missing observations for the number of hours spent with the seed.

Table H36: Impacts on job search for active and inactive job-search partners

	(1)	(2)	(3)	(4)	(5)	(6)
	Treat. effect for Searches at baseline	Treat. effect for non-Searches at baseline	Treatment difference: (1)-(2)	Searches at baseline (control)	Mean of control search partners (SD)	Obs.
Search index	-0.25 (0.17) [0.14]	-0.15 (0.11) [0.17]	-0.10 (0.19) [0.59]	0.32* (0.19) [0.09]*	-0.64 (1.09)	540
Searched job (7d)	-0.11 (0.08) [0.15]	-0.05 (0.05) [0.32]	-0.06 (0.09) [0.50]	0.03 (0.06) [0.58]	0.34 (0.48)	540
Searched boards (7d)	-0.18** (0.05) [0.00]***	-0.02 (0.04) [0.53]	-0.15** (0.06) [0.01]**	0.00 (0.05) [0.93]	0.17 (0.38)	540
Searched in networks (7d)	-0.03 (0.07) [0.69]	-0.03 (0.05) [0.61]	-0.00 (0.08) [0.99]	0.02 (0.12) [0.87]	0.34 (0.47)	540
Searched boards (1m)	-0.16* (0.09) [0.07]*	-0.14* (0.08) [0.08]*	-0.01 (0.10) [0.90]	0.13 (0.08) [0.11]	0.52 (0.50)	540
Searched in network (1m)	0.02 (0.07) [0.78]	-0.11** (0.05) [0.04]**	0.13 (0.08) [0.11]	-0.01 (0.07) [0.87]	0.72 (0.45)	540
Searched at work sites (1m)	-0.06 (0.07) [0.34]	0.03 (0.03) [0.37]	-0.09 (0.08) [0.21]	0.09* (0.05) [0.08]*	0.15 (0.36)	540
Searched at agency (1m)	-0.05 (0.04) [0.28]	-0.02 (0.03) [0.40]	-0.02 (0.05) [0.64]	-0.01 (0.03) [0.84]	0.10 (0.30)	540
Searched at central locations (1m)	-0.03 (0.02) [0.18]	-0.01 (0.01) [0.22]	-0.02 (0.02) [0.34]	0.04* (0.02) [0.06]*	0.02 (0.14)	540
Searched internet (1m)	0.06 (0.05) [0.31]	0.04 (0.03) [0.15]	0.02 (0.06) [0.78]	0.11*** (0.04) [0.00]***	0.08 (0.27)	540

Notes: ANCOVA estimates of job-search partner variable differences by seed treatment status. Outcome variables are listed on the left. The index is a standardised index of all outcome variables below. Regressions control for the baseline outcome as well as variables that are imbalanced at baseline. Standard errors are in parentheses and are clustered by seed individual. Stars on the coefficient estimates and brackets reflect unadjusted p -values (in brackets). p -values are in brackets. * denotes significance at 10 pct., ** at 5 pct., and *** at 1 pct. level.

ii) individuals who ever searched at the job boards

Table H37: Impacts on social interaction for active and inactive job-search partners

TABLES

	(1)	(2)	(3)	(4)	(5)	(6)
	Treat. effect for Ever searched at baseline	Treat. effect for non-Ever searched at baseline	Treatment difference: (1)-(2)	Ever searched at baseline (control)	Mean of control search partners (SD)	Obs.
Social interaction index	-0.22 (0.13) [0.10]	0.14 (0.14) [0.30]	-0.36** (0.16) [0.03]**	0.70** (0.25) [0.01]**	0.00 (1.00)	540
Spent time with seed (30d)	-0.07 (0.07) [0.32]	0.13** (0.07) [0.04]**	-0.20** (0.08) [0.02]**	0.14 (0.14) [0.31]	0.72 (0.45)	490
Travel to Addis (30d)	-0.12** (0.06) [0.03]**	0.06 (0.05) [0.28]	-0.18** (0.07) [0.01]**	0.19 (0.14) [0.16]	0.25 (0.43)	540
Shared travel expenses (30d)	-0.12** (0.06) [0.03]**	-0.01 (0.05) [0.78]	-0.10 (0.07) [0.12]	0.19 (0.13) [0.15]	0.24 (0.42)	540
Shared information (6m)	-0.07 (0.07) [0.31]	0.00 (0.08) [0.96]	-0.08 (0.09) [0.40]	0.41** (0.13) [0.00]**	0.41 (0.49)	540
Lent/borrowed (ever)	0.04 (0.06) [0.54]	0.04 (0.06) [0.53]	-0.00 (0.09) [0.99]	-0.02 (0.14) [0.89]	0.25 (0.44)	540
Hours spent with seed (30d)	-4.57 (3.01) [0.13]	3.81 (2.94) [0.19]	-8.38** (3.95) [0.03]**	6.46 (8.06) [0.42]	14.37 (21.35)	490
Job network	-0.08 (0.22) [0.71]	0.05 (0.26) [0.84]	-0.14 (0.30) [0.65]	2.16** (0.68) [0.00]**	1.49 (1.54)	540

Notes: ANCOVA estimates of job-search partner variable differences by seed treatment status. Outcome variables are listed on the left. The index is a standardised index of all outcome variables below. Regressions control for the baseline outcome as well as variables that are imbalanced at baseline. Standard errors are in parentheses and are clustered by seed individual. Stars on the coefficient estimates and brackets reflect unadjusted p -values (in brackets). p -values are in brackets. * denotes significance at 10 pct., ** at 5 pct., and *** at 1 pct. level. If the number of observations is smaller than 540, it is because of missing observations for the number of hours spent with the seed.

Table H38: Impacts on job search for active and inactive job-search partners

	(1)	(2)	(3)	(4)	(5)	(6)
	Treat. effect for Ever searched at baseline	Treat. effect for non-Ever searched at baseline	Treatment difference: (1)-(2)	Ever searched at baseline (control)	Mean of control search partners (SD)	Obs. TABLES
Searched index	-0.26* (0.15) [0.08]*	-0.13 (0.12) [0.28]	-0.13 (0.20) [0.51]	0.81** (0.34) [0.02]**	-0.64 (1.09)	540
Searched job (7d)	-0.07 (0.06) [0.27]	-0.07 (0.06) [0.25]	0.00 (0.09) [1.00]	0.16 (0.15) [0.29]	0.34 (0.48)	540
Searched boards (7d)	-0.13*** (0.05) [0.01]***	0.00 (0.03) [0.98]	-0.13** (0.06) [0.03]**	0.33** (0.13) [0.01]**	0.17 (0.38)	540
Searched in networks (7d)	-0.03 (0.07) [0.61]	-0.02 (0.06) [0.70]	-0.01 (0.09) [0.91]	0.23 (0.15) [0.13]	0.34 (0.47)	540
Searched boards (1m)	-0.19** (0.08) [0.01]**	-0.13 (0.09) [0.15]	-0.06 (0.10) [0.52]	0.19 (0.15) [0.22]	0.52 (0.50)	540
Searched in network (1m)	-0.03 (0.06) [0.59]	-0.12* (0.06) [0.05]*	0.09 (0.09) [0.35]	0.06 (0.12) [0.61]	0.72 (0.45)	540
Searched at work sites (1m)	-0.04 (0.04) [0.35]	0.03 (0.04) [0.45]	-0.07 (0.06) [0.20]	0.25* (0.14) [0.07]*	0.15 (0.36)	540
Searched at agency (1m)	-0.02 (0.03) [0.57]	-0.04 (0.03) [0.19]	0.02 (0.04) [0.59]	0.02 (0.09) [0.84]	0.10 (0.30)	540
Searched at central locations (1m)	-0.02 (0.01) [0.15]	-0.02* (0.01) [0.08]*	-0.00 (0.02) [0.87]	-0.01 (0.01) [0.57]	0.02 (0.14)	540
Searched internet (1m)	0.01 (0.04) [0.76]	0.04 (0.04) [0.23]	-0.03 (0.06) [0.58]	0.22* (0.13) [0.10]*	0.08 (0.27)	540

Notes: ANCOVA estimates of job-search partner variable differences by seed treatment status. Outcome variables are listed on the left. The index is a standardised index of all outcome variables below. Regressions control for the baseline outcome as well as variables that are imbalanced at baseline. Standard errors are in parentheses and are clustered by seed individual. Stars on the coefficient estimates and brackets reflect unadjusted p -values (in brackets). p -values are in brackets. * denotes significance at 10 pct., ** at 5 pct., and *** at 1 pct. level.

iii) individuals who searched for jobs in the last six months

Table H39: Impacts on social interaction for active and inactive job-search partners

TABLE H39

	(1)	(2)	(3)	(4)	(5)	(6)
	Treat. effect for Searchers (6m) at baseline	Treat. effect for non-Searchers (6m) at baseline	Treatment difference: (1)-(2)	Searchers (6m) at baseline (control)	Mean of control search partners (SD)	Obs.
Social interaction index	-0.23* (0.13) [0.08]*	0.08 (0.15) [0.61]	-0.31* (0.18) [0.08]*	0.05 (0.13) [0.68]	0.00 (1.00)	515
Spent time with seed (30d)	-0.04 (0.07) [0.59]	0.08 (0.07) [0.25]	-0.12 (0.09) [0.19]	0.01 (0.06) [0.84]	0.72 (0.45)	468
Travel to Addis (30d)	-0.09 (0.06) [0.11]	0.02 (0.06) [0.72]	-0.11 (0.08) [0.14]	0.02 (0.05) [0.68]	0.25 (0.43)	515
Shared travel expenses (30d)	-0.10* (0.05) [0.07]*	-0.03 (0.06) [0.66]	-0.07 (0.07) [0.33]	0.02 (0.05) [0.73]	0.24 (0.42)	515
Shared information (6m)	-0.04 (0.07) [0.56]	-0.06 (0.08) [0.45]	0.02 (0.10) [0.81]	-0.05 (0.07) [0.48]	0.41 (0.49)	515
Lent/borrowed (ever)	-0.04 (0.06) [0.49]	0.11** (0.06) [0.04]**	-0.15* (0.08) [0.05]*	0.05 (0.06) [0.40]	0.25 (0.44)	515
Hours spent with seed (30d)	-7.03** (2.90) [0.02]**	2.72 (2.74) [0.32]	-9.75*** (3.69) [0.01]***	1.63 (2.79) [0.56]	14.37 (21.35)	468
Job network	-0.09 (0.21) [0.67]	-0.09 (0.25) [0.72]	0.00 (0.28) [0.99]	0.14 (0.22) [0.53]	1.49 (1.54)	515

Notes: ANCOVA estimates of job-search partner variable differences by seed treatment status. Outcome variables are listed on the left. The index is a standardised index of all outcome variables below. Regressions control for the baseline outcome as well as variables that are imbalanced at baseline. Standard errors are in parentheses and are clustered by seed individual. Stars on the coefficient estimates and brackets reflect unadjusted p -values (in brackets). p -values are in brackets. * denotes significance at 10 pct., ** at 5 pct., and *** at 1 pct. level. If the number of observations is smaller than 540, it is because of missing observations for the number of hours spent with the seed.

Table H40: Impacts on job search for active and inactive job-search partners

	(1)	(2)	(3)	(4)	(5)	(6)
	Treat. effect for Searchers (6m) at baseline	Treat. effect for non-Searchers (6m) at baseline	Treatment difference: (1)-(2)	Searchers (6m) at baseline (control)	Mean of control search partners (SD)	Obs.
Search index	-0.24* (0.14) [0.07]*	-0.08 (0.12) [0.49]	-0.16 (0.17) [0.35]	0.49*** (0.14) [0.00]***	-0.64 (1.09)	515
Searched job (7d)	-0.10* (0.06) [0.09]*	-0.03 (0.05) [0.58]	-0.07 (0.07) [0.33]	0.18*** (0.07) [0.01]***	0.34 (0.48)	515
Searched boards (7d)	-0.14*** (0.05) [0.00]***	0.02 (0.03) [0.46]	-0.17*** (0.06) [0.00]***	0.13*** (0.04) [0.00]***	0.17 (0.38)	515
Searched in networks (7d)	-0.01 (0.06) [0.81]	-0.01 (0.06) [0.79]	0.00 (0.07) [1.00]	0.18*** (0.06) [0.00]***	0.34 (0.47)	515
Searched boards (1m)	-0.18** (0.08) [0.02]**	-0.13 (0.09) [0.16]	-0.05 (0.10) [0.59]	0.16** (0.08) [0.04]**	0.52 (0.50)	515
Searched in network (1m)	-0.02 (0.06) [0.75]	-0.10 (0.07) [0.12]	0.09 (0.09) [0.32]	0.12 (0.07) [0.11]	0.72 (0.45)	515
Searched at work sites (1m)	-0.05 (0.05) [0.28]	0.08* (0.04) [0.05]*	-0.13** (0.06) [0.05]**	0.11** (0.04) [0.01]**	0.15 (0.36)	515
Searched at agency (1m)	-0.00 (0.04) [0.99]	-0.05 (0.03) [0.12]	0.05 (0.05) [0.33]	-0.01 (0.03) [0.74]	0.10 (0.30)	515
Searched at central locations (1m)	-0.02 (0.02) [0.12]	-0.01 (0.01) [0.21]	-0.01 (0.02) [0.53]	0.02 (0.02) [0.26]	0.02 (0.14)	515
Searched internet (1m)	0.03 (0.04) [0.49]	0.04 (0.03) [0.19]	-0.01 (0.05) [0.85]	0.10*** (0.04) [0.01]***	0.08 (0.27)	515

Notes: ANCOVA estimates of job-search partner variable differences by seed treatment status. Outcome variables are listed on the left. The index is a standardised index of all outcome variables below. Regressions control for the baseline outcome as well as variables that are imbalanced at baseline. Standard errors are in parentheses and are clustered by seed individual. Stars on the coefficient estimates and brackets reflect unadjusted p -values (in brackets). p -values are in brackets. * denotes significance at 10 pct., ** at 5 pct., and *** at 1 pct. level.

H.6 Other heterogeneity dimensions

Table H41: Impacts on job search and social interactions by baseline search, controlling for different heterogeneity dimensions

	(1) Social interaction index	(2) Search index
Treated seed x baseline board search	-0.60*** (0.20)	-0.30 (0.22)
Treated seed x female	0.12 (0.20)	-0.09 (0.17)
Treated seed x education	0.12 (0.08)	-0.03 (0.08)
Treated seed x expenditure	0.00 (0.00)	-0.00 (0.00)
Treatment	-0.07 (0.18)	-0.01 (0.15)
Constant	Yes	Yes
Baseline controls	Yes	Yes
Observations	540	540

Notes: ANCOVA estimates of job-search partner variable differences by seed treatment status. Outcome variables are listed at the top. Regressions control for the baseline outcome as well as variables that are imbalanced at baseline. Education is measured on an ordinal scale 0-3. Wealth is measured as baseline weekly expenditure. Standard errors are in parentheses and are clustered by seed individual. Stars on the coefficient estimates and brackets reflect unadjusted p -values. * denotes significance at 10 pct., ** at 5 pct., and *** at 1 pct. level.

I Additional Figures

Figure A1: Distribution of treated and untreated seeds and job-search partners in Addis Ababa

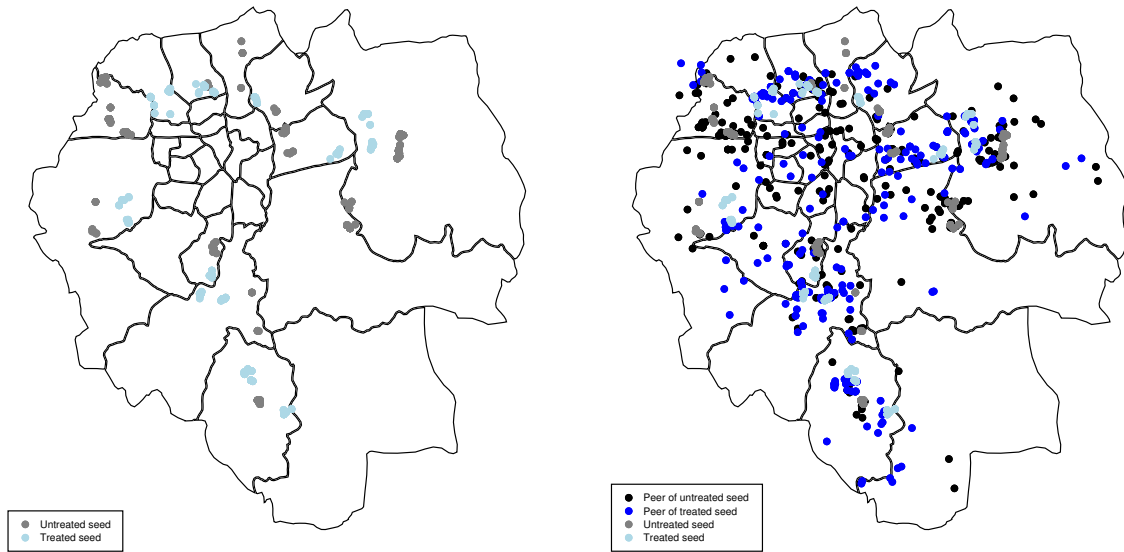


Figure A2: Kernel density estimate of the distance between job-search partners and seeds (in km), at baseline

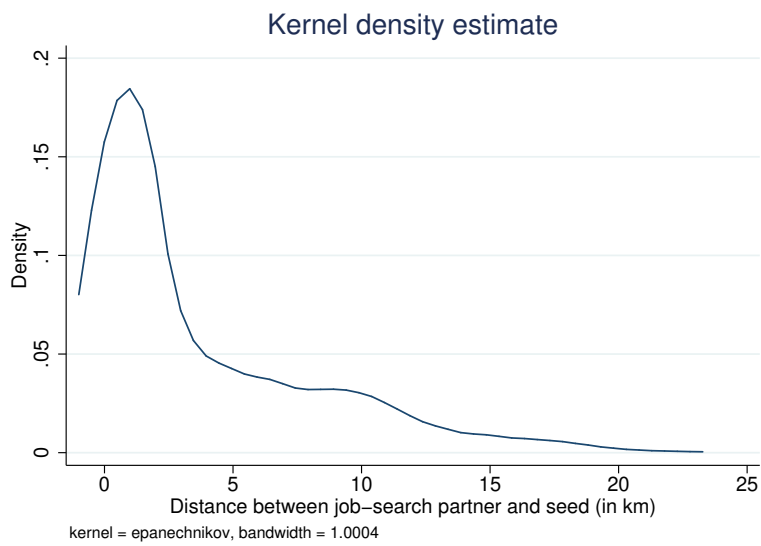
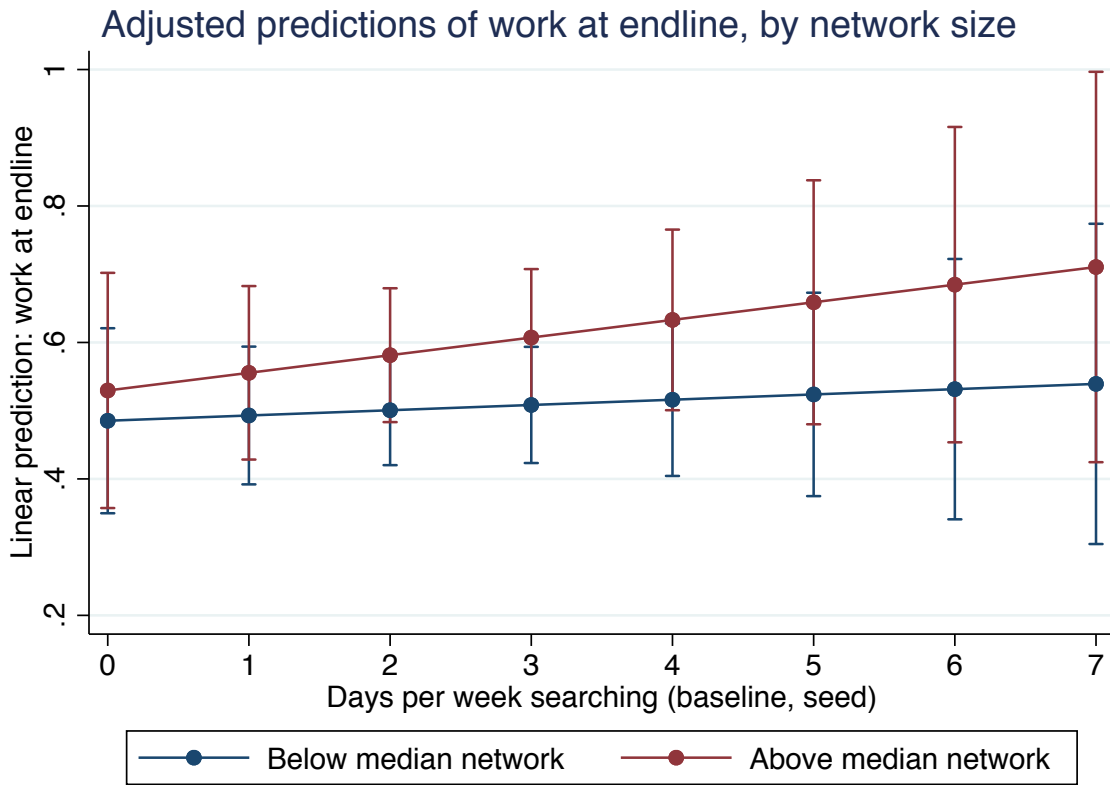


Figure A3: Complementaries between partner job search and network size



Notes: This figure shows the linear prediction of whether a job-search partner has work at endline from the number of days that the seed spend searching for a job at baseline. The gradient is shown separately by whether the job-search partner's network size is below or above the median. 95% confidence intervals are shown.

Figure A4: Subsidy amount and duration for the seed individuals

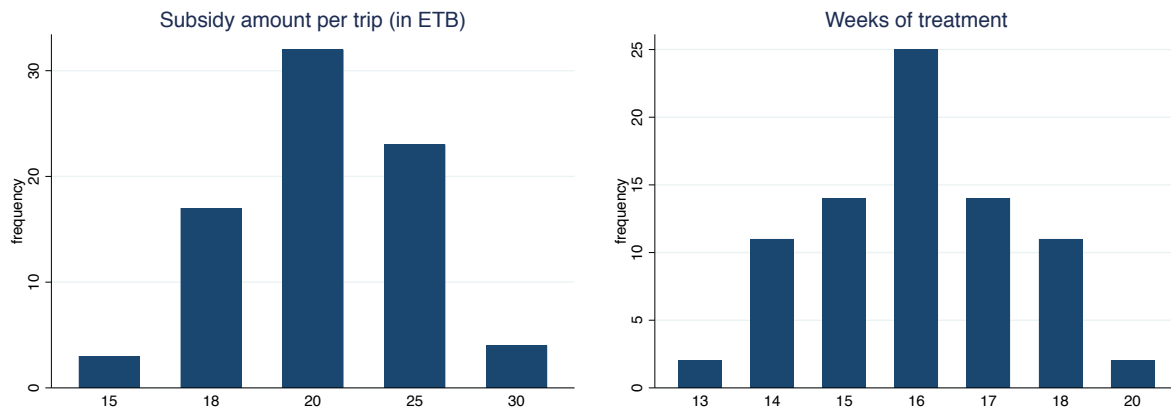
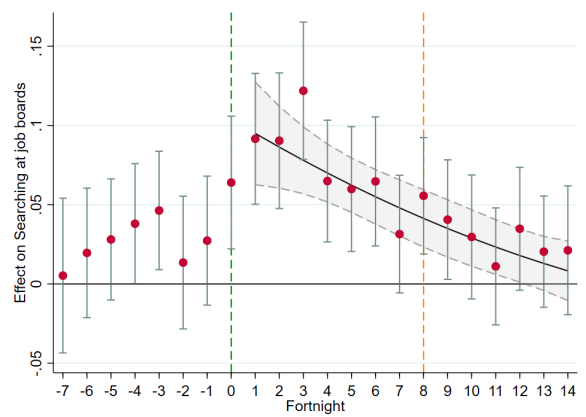
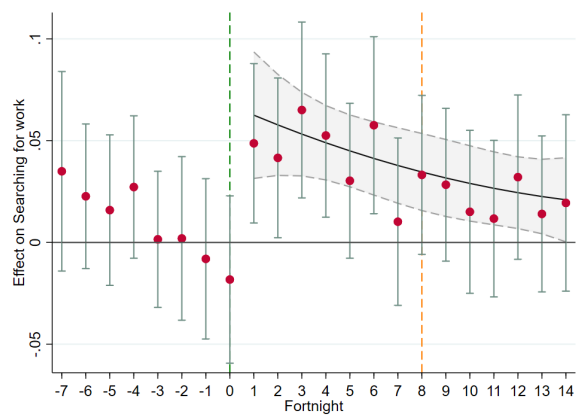


Figure A5: Impact trajectory of the transport treatment for the seed individuals

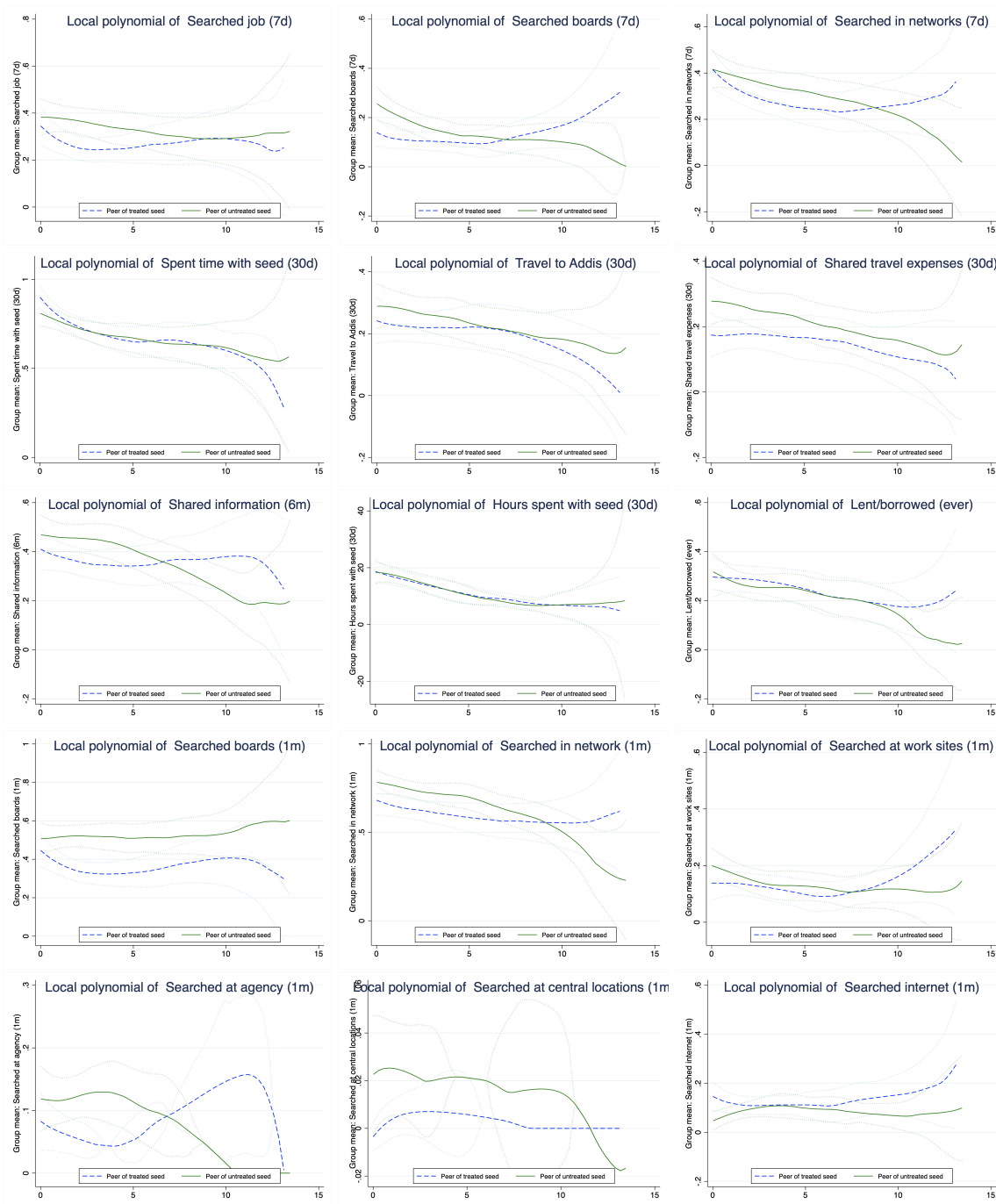
(a) Impact on search (any active step)

(b) Impact on searching at the job boards



Notes: The green dotted line indicates the fortnight when the treatment begins. The orange dotted line indicates the week when the treatment ends. Figure 1 from Abebe et al. (2020).

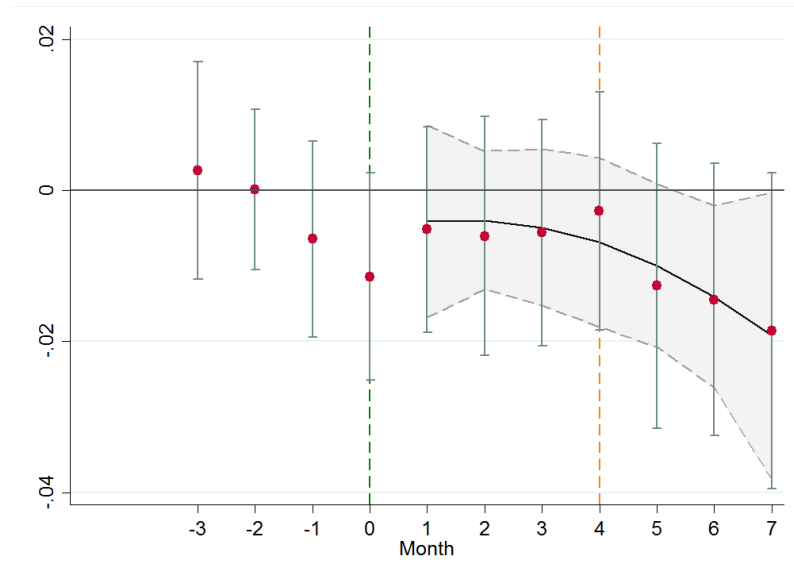
Figure A6: Local polynomials of the intervention effects, by the distance between the job-search partner and the seed



Notes:

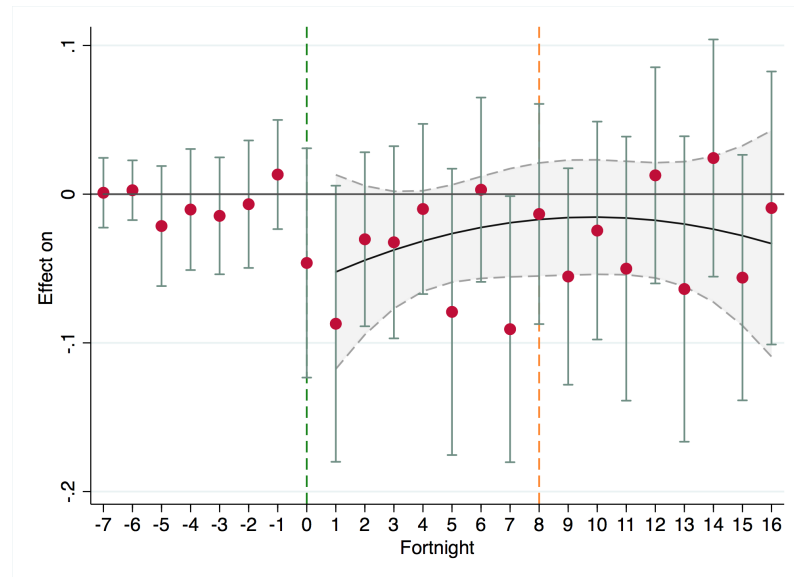
Kernel-weighted (epanechnikov) local polynomial regression of the variable on the y-axis on distance between job-search partner and seed, by seed treatment status. Thin lines display 95 percent confidence intervals. The x-axis is trimmed at the 95th percentile.

Figure A7: Impact trajectory of the transport treatment: impact on talking to friends



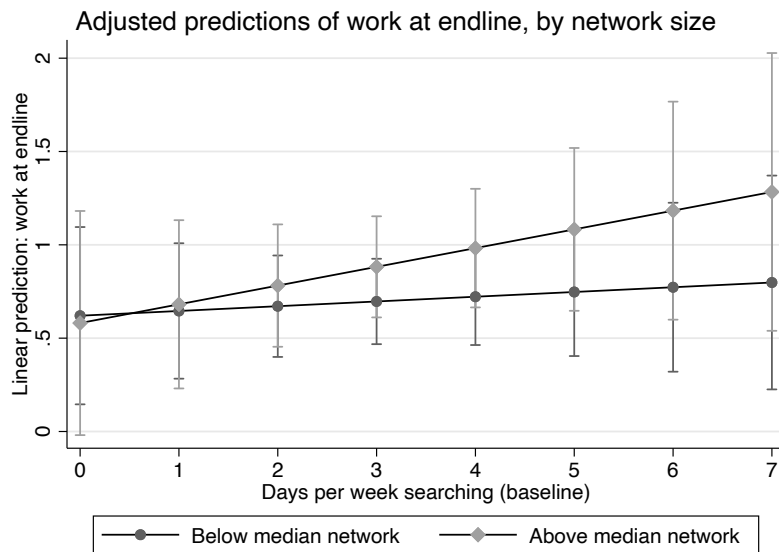
Notes: The green dotted line indicates the fortnight when the treatment begins. The orange dotted line indicates the week when the treatment ends. From Abebe et al. (2020).

Figure A8: Impact trajectory of the transport treatment for seeds: impact on whether seed talked to friends



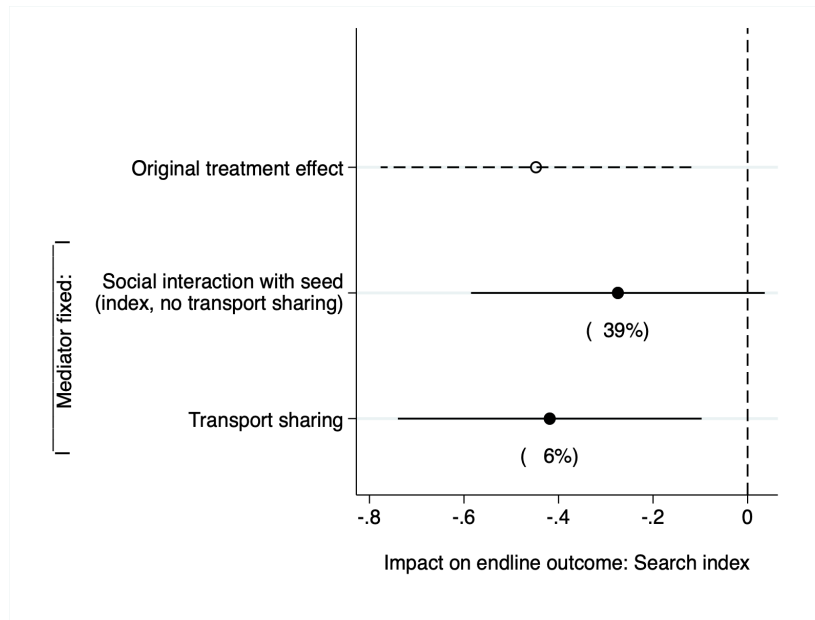
Notes: The green dotted line indicates the fortnight when the treatment begins. The orange dotted line indicates the week when the treatment ends. Own calculations, using the 165 seed individuals. The results are very similar when using the complete control group sample ($N \approx 800$).

Figure A9: Complementarities between own and network search, for individuals living in the city center



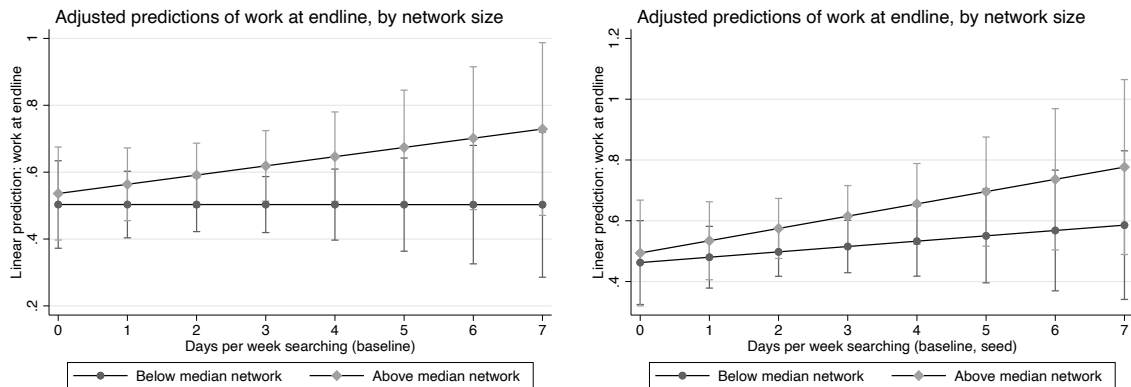
This figure shows the linear prediction of whether a respondent has work at endline from the number of days searching for a job at baseline. The gradient is shown separately by whether the individual’s network size is below or above the median. This graph is restricted to individuals who live within 3 kilometers of the city center, i.e. individuals with a below median distance to the center.

Figure A10: Mediation analysis: impact of transport subsidy on job search



This figure reports coefficient estimates and 90 percent confidence intervals of the impact of the transport subsidy on endline search outcomes of the job-search contacts. The first row reports the original treatment effect. The following rows report the Average Controlled Direct Effect (ACDE) of the intervention, obtained by fixing the mediator indicated in the row's name (Acharya et al., 2016). We can assess the importance of a given mediator by comparing the original treatment effect to the ACDE. To facilitate comparison, we report below each coefficient the share of the original treatment effect that is accounted for by the mediator.

Figure A11: Complementarities between own and network search, with controls



Note: These figures show the linear prediction of whether a job-search partner has work at endline from the number of days searching for a job at baseline (either herself or her seed). The left panel shows the days searched by the job-search partners, the right panel shows the days searched by the seeds. The gradient is shown separately by whether the individual's network size is below or above the median. The included control variables are age and gender. 95% confidence intervals are shown.